

GALKIN AUTOMATED PRODUCTS

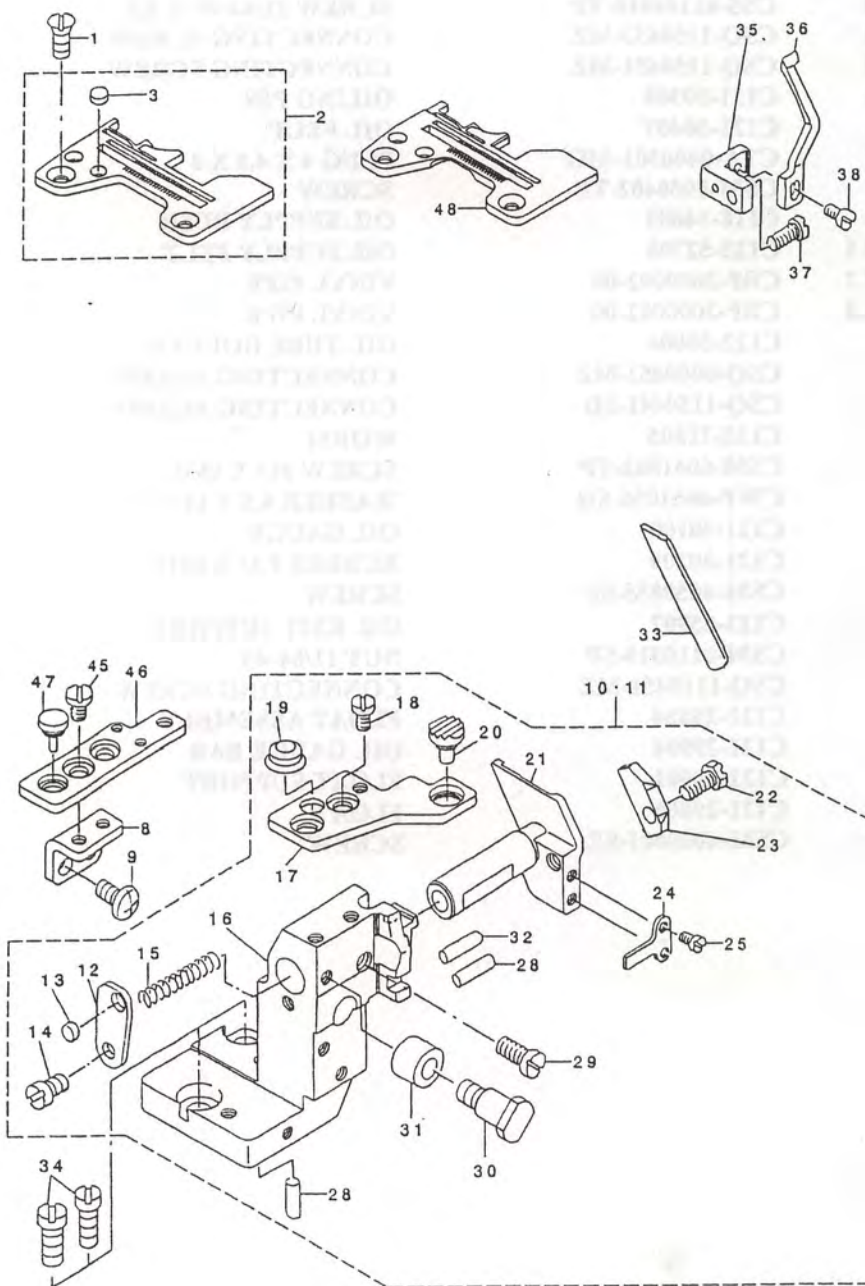
**GAP 4700
DOUBLE BORDER SERGER**

**MANUAL
&
PARTS LIST**

12. LUBRICATION MECHANISM COMPONENTS

ITEM	QTY.	PART NUMBER	DESCRIPTION
1	1	C122-75962	OIL PUMP ASSEMBLY
2	1	C122-56103	WORK GEAR
3	1	CSS-81104010-TP	SCREW 11/64-40 X 3.5
4	1	CSQ-1150453-MZ	CONNECTING SCREW
5	1	CSQ-1150451-MZ	CONNECTING SCREW
6	1	C121-30308	OILING PIN
7	1	C121-30407	OIL FELT
8	1	CTA-0400301-MO	PLUG 4 X 4.5 X 3
9	1	CSM-8050402-TP	SCREW
10	1	C118-34603	OIL SUPPLY BUSH
11	0.1	C122-52706	OIL SUPPLY FELT
12	0.2	CBP-3000002-00	VINYL PIPE
13	0.3	CBP-3000002-00	VINYL PIPE
14	4	C122-56004	OIL TUBE HOLDER
15	1	CSQ-0000451-MZ	CONNECTING SCREW
16	1	CSQ-1150441-SD	CONNECTING SCREW
17	1	C122-71805	WORM
18	2	CSM-6061802-TP	SCREW M6 X 18.0
19	2	CWP-0651056-SH	WASHER 6.5 X 11 X 1
20	1	C121-30100	OIL GAUGE
21	1	C121-30209	RUBBER PACKING
22	2	CSM-4050855-SP	SCREW
23	1	C122-55907	OIL EXIT SUPPORT
24	1	CSM-6110310-SP	NUT 11/64-40
25	1	CSQ-1110451-MZ	CONNECTING SCREW
26	1	C121-29854	FLOAT ASSEMBLY
27	1	C121-29904	OIL GAUGE BAR
28	1	C121-30001	FLOAT SUPPORT
29	1	C121-29805	FLOAT
30	1	CSM-4060801-SE	SCREW

11. LOWER KNIFE COMPONENTS

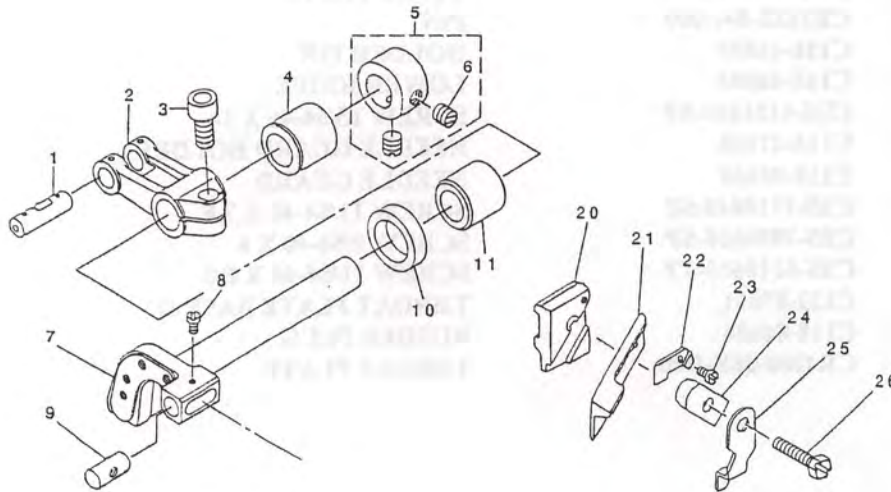


11.LOWER KNIFE COMPONENTS

ITEM	QTY.	PART NUMBER	DESCRIPTION
1	2	CSS-2110910-SL	SCREW 11/64-40 X 9.0
2	1	CR4200-JOE-DA0	THROAT PLATE ASSEMBLY
3	2	C118-06304	PLUG
8	1	C122-88908	THROAT PLATE BASE (B) SUPPORT
9	2	CSM-4051055-SP	SCREW
10	1	C122-57267	LOWER KNIFE BRACKET ASSEMBLY
12	1	C121-33221	SPRING STOPPER
13	1	C118-06304	PLUG
14	1	CSS-7110720-SP	SCREW 11/64-40 X 7.0
15	1	C118-46607	SPRING
16	1	C121-32619	LOWER KNIFE BRACKET
17	1	C121-02208	THROAT PLATE BASE (A)
18	2	CSS-6110610-TP	SCREW 11/64-40 X 6.0
19	1	C121-03701	RUBBER PLUG (B)
20	1	C121-03602	RUBBER PLUG (A)
21	1	C121-32700	LOWER KNIFE SLIDE STUD
22	1	CSS-9111010-SP	SCREW 11/64-40 X 9.5
23	1	C121-33104	LOWER KNIFE PRESSER PLATE
24	1	C121-32908	ROTATING STOPPER
25	1	CSS-7090710	SCREW 9/64-40 X 6.8
28	2	C121-33708	HOLDER PIN
29	1	CSS-7151120-SP	SCREW 15/64-40 X 11
30	1	CB1423-804-000	UPPER PLATE
31	1	CB1422-804-000	PIN
32	1	C118-46805	HOLDER PIN
33	1	C118-46003	LOWER KNIFE
34	2	CSS-6151440-SP	SCREW 15/64-40 X 14
35	1	C115-47100	NEEDLE GUARD HOLDER
36	1	C118-90100	NEEDLE GUARD
37	1	CSS-7110840-SP	SCREW 11/64-40 X 7.8
38	1	CSS-7090610-SP	SCREW 9/64-40 X 6
45	2	CSS-6110610-TP	SCREW 11/64-40 X 6.0
46	1	C122-87801	THROAT PLATE BASE ©
47	1	C118-04606	RUBBER PLUG
48	1	CR4200-J6E-D00	THROAT PLATE

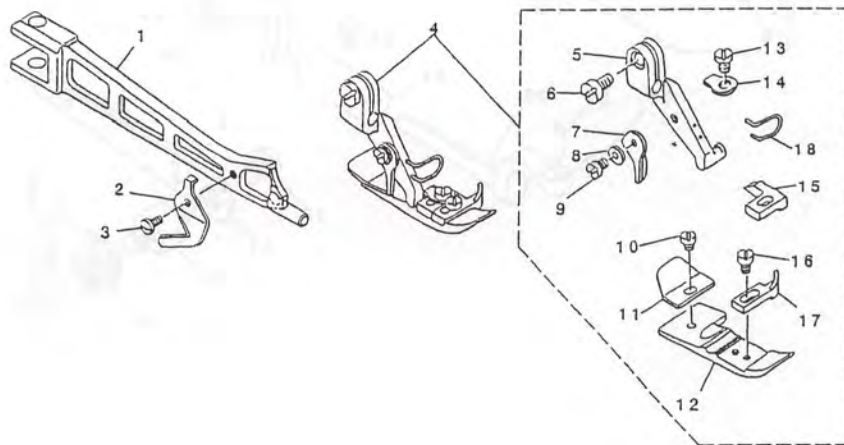
10. UPPER KNIFE COMPONENTS

ITEM	QTY.	PART NUMBER	DESCRIPTION
1	1	C118-23804	CRANK PIN (C0
2	1	C122-86704	FEED FORKED ARM
3	1	CSM-6061402-TP	SCREW M6 X 14.0
4	1	C121-32502	BUSHING REAR
5	1	CCS-111101E-SH	COLLAR ASSEMBLY 11.11 X 10
6	2	CSS-8660330-SP	SCREW 1/4-40 X 3.0
7	1	C121-32304	KNIFE DRIVING ARM SHAFT
8	1	CSS-4060310-SP	SCREW 3/32-56 X 2.5
9	1	C115-65801	UPPER KNIFE GUIDE SHAFT
10	1	C115-66809	OIL SEAL
11	1	C121-32403	BUSHING FRONT
20	1	C115-98000	UPPER KNIFE SUPPORT
21	1	C118-45807	UPPER KNIFE
22	1	C115-65702	WASHER
23	1	CSS-4060310-SP	SCREW 3/32-56 X 2.5
24	1	C115-65504	UPPER KNIFE PRESSER PLATE
25	1	C118-48405	UPPER KNIFE COVER
26	1	CSS-9111610-SP	SCREW 11/64-40 X 16.0



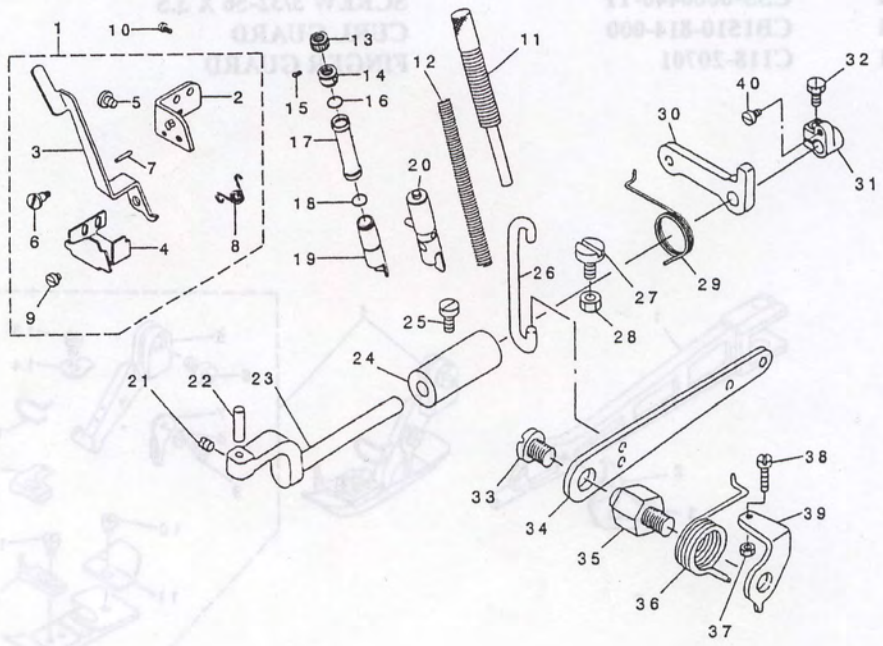
9. PRESSER FOOT COMPONENTS (2)

ITEM	QTY.	PART NUMBER	DESCRIPTION
1	1	C122-53811	PRESSER FOOT LIFTING ARM
2	1	CB1528-804-000-A	THREAD TRIMMER
3	1	CSS-7060510-SP	SCREW 3/32-56 X 4.8
4	1	C118-76166	PRESSER FOOT ASSEMBLY
5	1	C118-72009	PRESSER FOOT HINGE
6	1	CSS-6090650-SP	SCREW 9/64-40 X 6.0
7	1	CB1530-804-000	STOPPER
8	1	CWP-0250516-SD	WASHER 2.5 X 0.5
9	1	CSS-7060610-SP	SCREW 3/32-56 X 5.5
12	1	CB1507-804-C00	PRESSER FOOT <i>MODIFIED</i>
13	1	CSS-7080520-SP	SCREW 1/8-44 X 4.9
14	1	CB1508-804-00B	SPRING
15	1	CB1509-804-C00	STITCH TONGUE
16	1	CSS-6060440-TP	SCREW 3/32-56 X 3.5
17	1	CB1510-814-000	CURL GUARD
18	1	C118-20701	FINGER GUARD



8. PRESSER FOOT COMPONENTS (1)

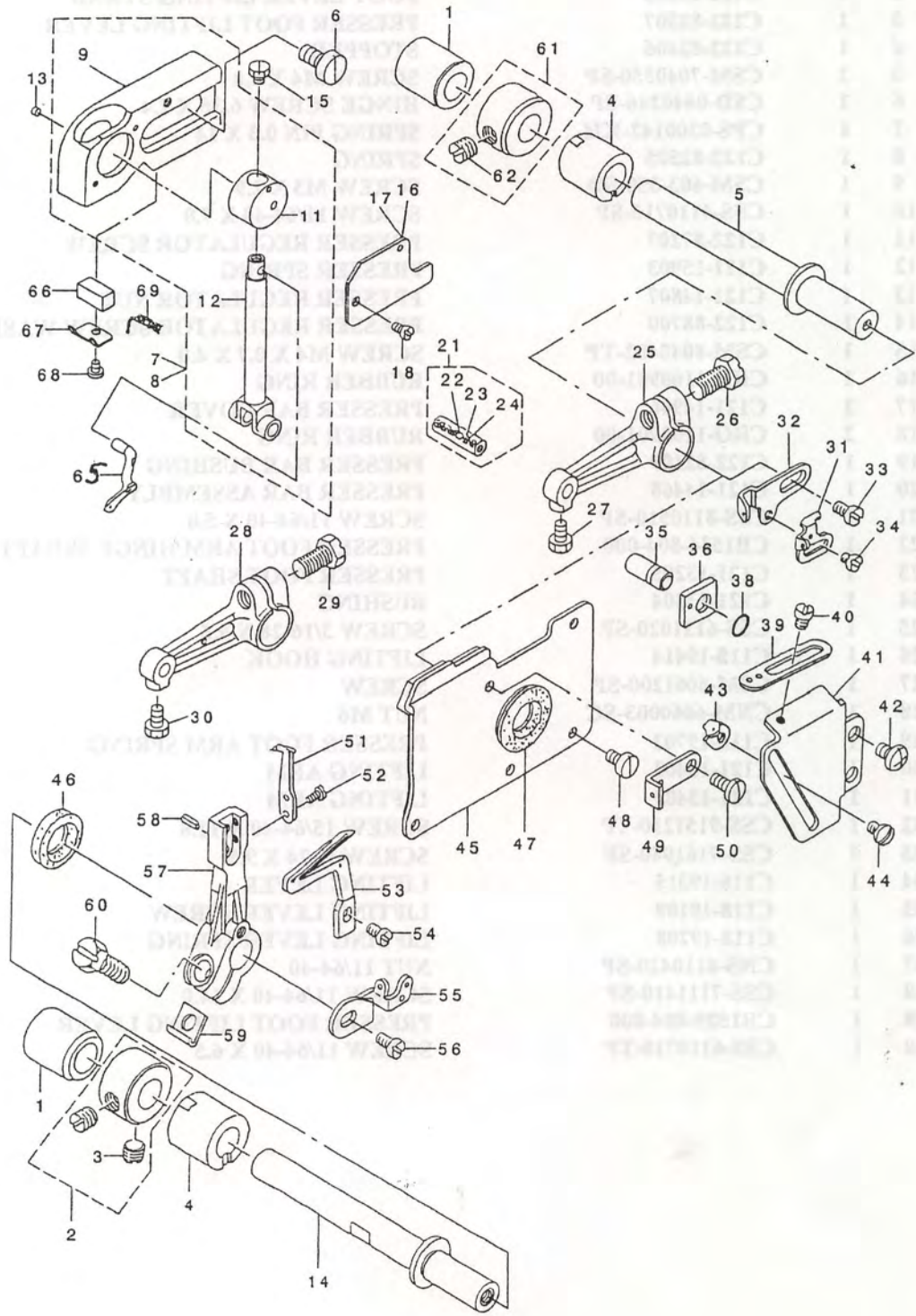
ITEM	QTY	PART NUMBER	DESCRIPTION
1	1	C112-23811	PRESSER FOOT LIFTING ARM
2	1	CB122-804-000-A	THREAD TRIMMER
3	1	C22-706010-2P	SCREW 3/32-56 X 4.5
4	1	C118-70162	PRESSER FOOT ASSEMBLY
5	1	C118-72009	PRESSER FOOT HINGE
6	1	C22-609020-2P	SCREW 7/64-40 X 6.0
7	1	CB120-804-000	STOPPER
8	1	CWF-025012-2D	WASHER 2.5 X 0.3
9	1	C22-706010-2P	SCREW 3/32-56 X 2.5
10	1	CB1507-804-C00	PRESSER FOOT MODIFIED
11	1	C22-706020-2P	SCREW 1/8-4 X 4.5
12	1	CB1502-804-00B	SPRING
13	1	CB1502-804-C00	STITCH TONGUE
14	1	C22-605040-TT	SCREW 3/32-56 X 2.5
15	1	C118-20701	CLIP
16	1		
17	1		
18	1		
19	1		
20	1		
21	1		
22	1		
23	1		
24	1		
25	1		
26	1		
27	1		
28	1		
29	1		
30	1		
31	1		
32	1		
33	1		
34	1		
35	1		
36	1		
37	1		
38	1		
39	1		



8. PRESSER FOOT COMPONENTS (1)

ITEM	QTY.	PART NUMBER	DESCRIPTION
1	1	C122-82257	FOOT LEVER LIFTING STAND ASSEMBLY
2	1	C122-82208	FOOT LEVER LIFTING STAND
3	1	C122-82307	PRESSER FOOT LIFTING LEVER
4	1	C122-82406	STOPPER
5	2	CSM-7040550-SP	SCREW M4 X 5.0
6	1	CSD-0640246-SP	HINGE SCREW 6.35 X 2.4
7	1	CPS-0300142-KH	SPRING PIN 0.3 X 14
8	1	C122-82505	SPRING
9	1	CSM-603-350-SD	SCREW M3 X 2.9
10	1	CSS-4110715-SP	SCREW 11/64-40 X 7.0
11	1	C122-87207	PRESSER REGULATOR SCREW
12	1	C121-15903	PRESSER SPRING
13	1	C121-14807	PRESSER REGULATOR NUT
14	1	C122-88700	PRESSER REGULATOR SCREW WASHER
15	1	CSM-8040402-TP	SCREW M4 X 0.7 X 4.0
16	1	CRO-1100901-00	RUBBER RING
17	1	C121-14906	PRESSER BAR COVER
18	2	CRO-1100901-00	RUBBER RING
19	1	C122-82109	PRESSER BAR BUSHING
20	1	C121-14468	PRESSER BAR ASSEMBLY
21	1	CSS-8110510-SP	SCREW 11/64-40 X 5.0
22	1	CB1534-804-000	PRESSER FOOT ARM HINGE SHAFT
23	1	C121-13205	PRESSER FOOT SHAFT
24	1	C121-13304	BUSHING
25	1	CSS-6121020-SP	SCREW 3/16-28 X 9.5
26	1	C118-19414	LIFTING HOOK
27	1	CSM-6061200-SP	SCREW
28	1	CNM-6060003-SC	NUT M6
29	1	C118-19703	PRESSER FOOT ARM SPRING
30	1	C121-13403	LIFTING ARM
31	1	C121-13403	LIFTING ARM
32	1	CSS-9151210-TP	SCREW 15/64-40 X 11.8
33	1	CSS-7161040-SP	SCREW 1/4-24 X 9.5
34	1	C118-19315	LIFTING LEVER
35	1	C118-19109	LIFTING LEVER SCREW
36	1	C118-19208	LIFTING LEVER SPRING
37	1	CNS-6110420-SP	NUT 11/64-40
38	1	CSS-7111410-SP	SCREW 11/64-40 X 14.0
39	1	CB1529-804-000	PRESSER FOOT LIFTING LEVER
40	1	CSS-6110710-TP	SCREW 11/64-40 X 6.5

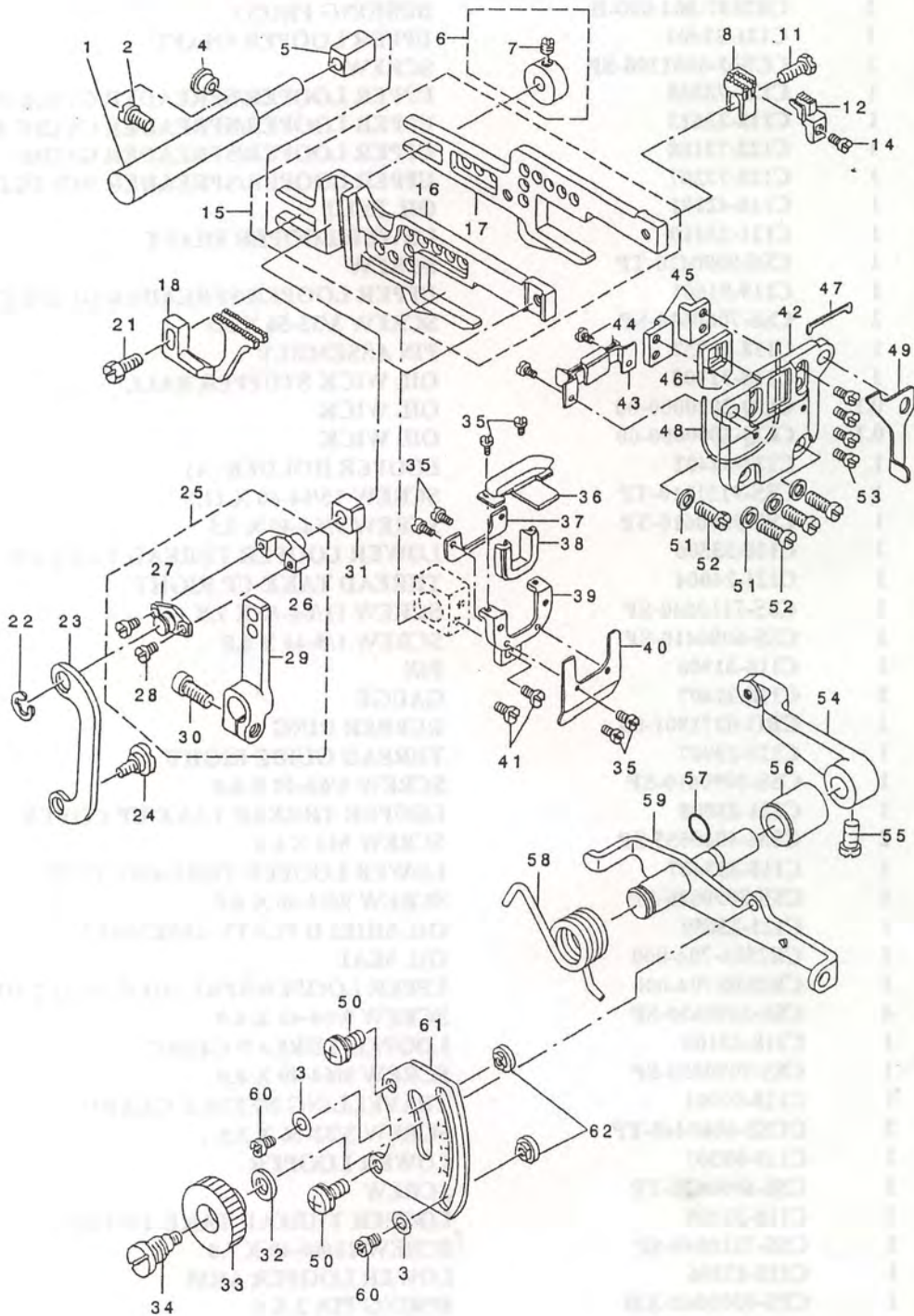
UPPER & LOWER LOOPER COMPONENTS



7. UPPER SPREADER & LOWER LOOPER COMPONENTS

ITEM	QTY.	PART NUMBER	DESCRIPTION
1	2	C122-54009	BUSHING REAR
2	2	CCS-103121A-SH	COLLAR ASSEMBLY 10.32 X 12
3	4	CSS-8660530-TP	SCREW 1/4-40 X 4.5
4	2	CB2507-804-000-B	BUSHING FRONT
5	1	C121-22404	UPPER LOOPER SHAFT
6	2	CCSM-6061200-SP	SCREW
7	1	C122-73355	UPPER LOOPER/SPREADER GUIDE ASSEM.
9	1	C118-33613	UPPER LOOPER/SPREADER GUIDE ASSEM.
11	1	C122-73108	UPPER LOOPER/SPREADER GUIDE
12	1	C122-73207	UPPER LOOPER/SPREADER HOLDER
13	1	C118-42101	OIL FELT
14	1	C121-23410	LOWER LOOPER SHAFT
15	1	CSS-9090410-TP	SCREW
16	1	C119-91601	UPPER LOOPER/SPREADER GUIDE COVER
18	2	CSS-7060610-SP	SCREW 3/32-56 X 5.5
21	1	C118-31757	PIN ASSEMBLY
22	1	C118-31708	OIL WICK STOPPER BALL
23	0.1	CCQ-2020000-00	OIL WICK
24	0.1	CCQ-2000000-00	OIL WICK
25	1	C122-84402	LOOPER HOLDER (A)
26	1	CSS-9151210-TP	SCREW 15/64-40 X 11.8
27	1	CSS-9090610-TP	SCREW 9/64-40 X 5.5
31	1	C118-33506	LOWER LOOPER THREAD TAKE-UP
32	1	C121-24004	THREAD TAKE-UP RIGHT
33	1	CSS-7110840-SP	SCREW 11/64-40 X 7.8
34	1	CSS-6080410-SP	SCREW 1/8-44 X 4.0
35	1	C118-31906	PIN
36	1	C118-31807	GAUGE
38	1	CRO-0371801-00	RUBBER RING
39	1	C121-23907	THREAD GUIDE RIGHT
40	1	CSS-3090610-SP	SCREW 9/64-40 X 6.0
41	1	C121-23808	LOOPER THREAD TAKE UP COVER
42	2	CSM-4040655-SP	SCREW M4 X 6.0
43	1	C118-333407	LOWER LOOPER THREAD GUIDE
44	1	CSS-3090610-SP	SCREW 9/64-40 X 6.0
45	1	C121-23659	OIL SHIELD PLATE ASSEMBLY
46	1	CB2508-704-000	OIL SEAL
47	1	CB2530-704-000	UPPER LOOPER/SPREADER SHAFT RUBBER RING
48	4	CSS-6090630-SP	SCREW 9/64-40 X 6.0
49	1	C118-33100	LOOPER THREAD GUIDE
50	1	CSS-7090850-SP	SCREW 9/64-40 X 8.0
51	1	C118-90001	TRAVELLING NEEDLE GUARD
52	2	CCSS-6060440-TP	SCREW 3/32-56 X 3.5
53	1	C119-99307	LOWER LOOPER
54	1	CSS-6090620-TP	SCREW
55	1	C118-33209	LOOPER THREAD TAKE-UP LEFT
56	1	CSS-7110840-SP	SCREW 11/64-40 X 7.8
57	1	C122-87306	LOWER LOOPER ARM
58	1	CPS-0300062-KH	SPRING PIN 3 X 6
59	1	CB2531-704-000	WASHER
60	1	CSS-9151210-TP	SCREW 15/64-40 X 11.8
61	1	CCS-103121A-SH	COLLAR ASSEMBLY 10.32 X 12
62	2	CSS-8660530-TP	SCREW 1/4-40 X 4.5
65	1	C118-88609	SPREADER
66	1	C121-30803	OIL FELT
67	1	C121-30704	FELT HOLDER
68	1	CSS-7060310-SP	SCREW 3/32-56 X 3.0
69	1	CCQ-2020000-00	OIL WICK

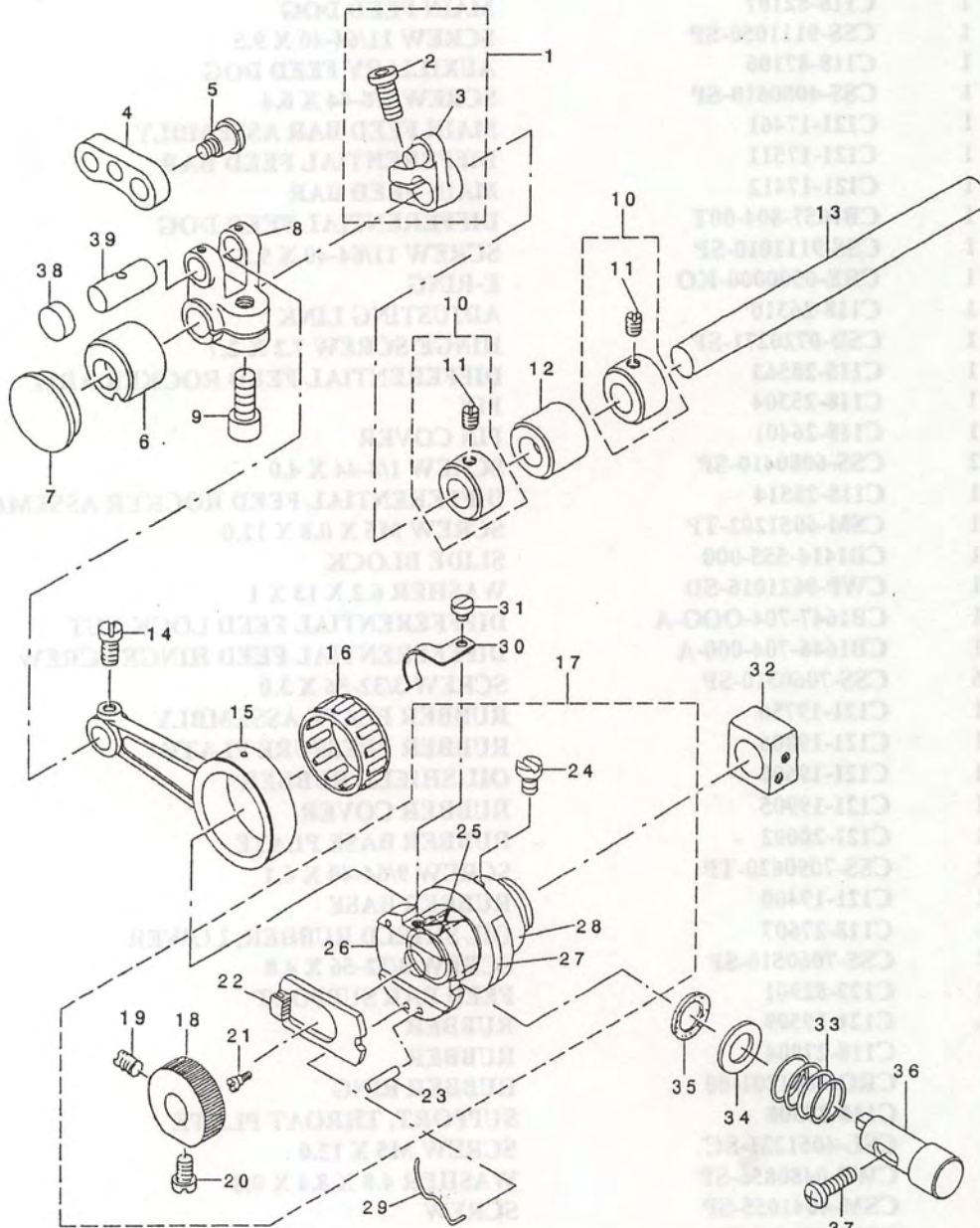
6. FEED MECHANISM COMPONENTS (2)



6. FEED MECHANISM COMPONENTS (2)

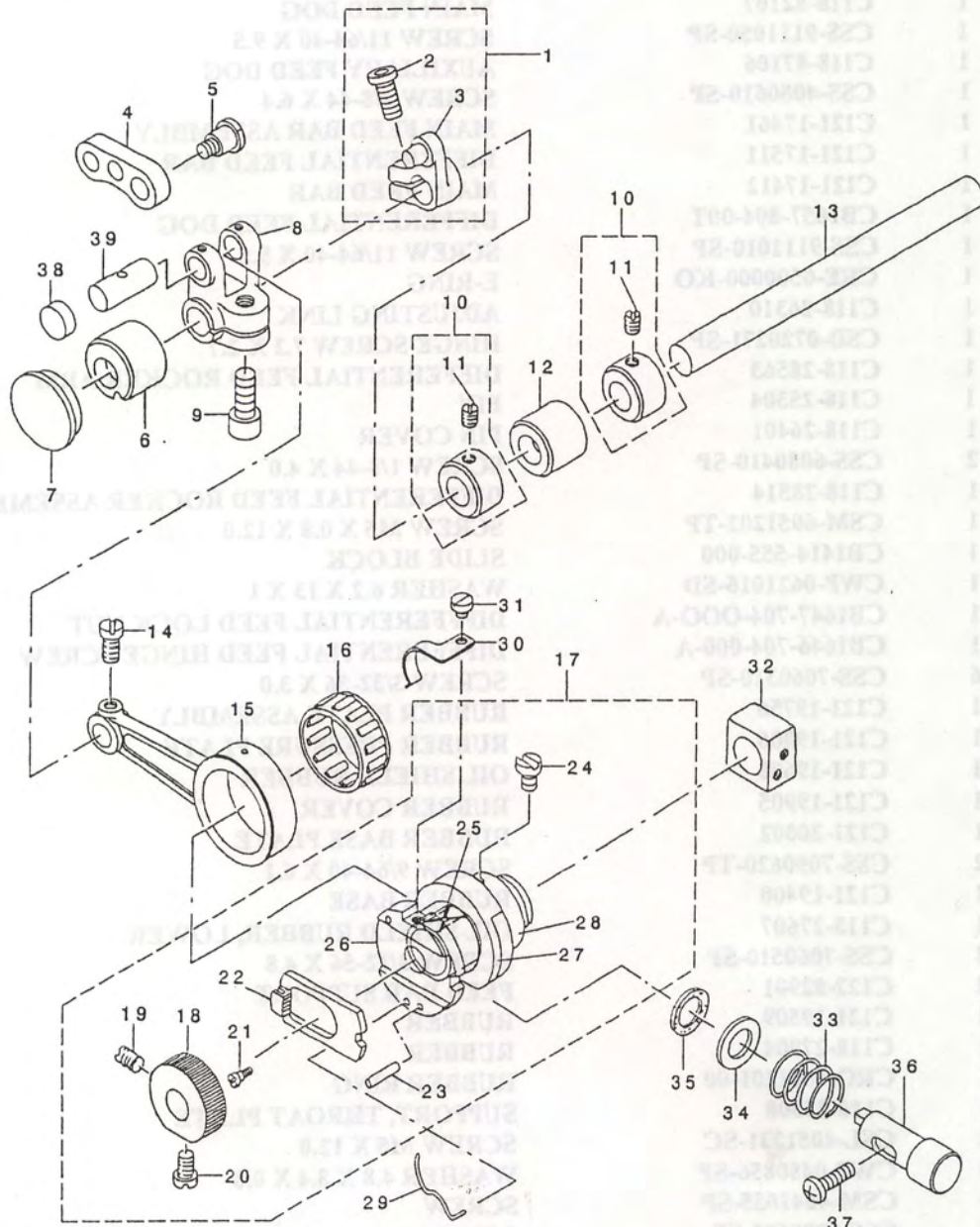
ITEM	QTY.	PART NUMBER	DESCRIPTION
1	1	C118-27409	FEED BAR SHAFT
2	1	CSM-4040855-SP	SCREW
3	2	CWP-0371016-SD	WASHER 3.7 X 8 X 1
4	1	CTA-0800504-RO	PLUG 8 X 4.5
5	1	CB1624-704-000	SLIDE BLOCK
6	1	C118-28050	COLLAR ASSEMBLY
7	1	CSS-8110410-TP	SCREW 11/64-40 X 3.5
8	1	C118-82107	MAIN FEED DOG
11	1	CSS-9111050-SP	SCREW 11/64-40 X 9.5
12	1	C118-87106	AUXILIARY FEED DOG
14	1	CSS-4080610-SP	SCREW 1/8-44 X 6.4
15	1	C121-17461	MAIN FEED BAR ASSEMBLY
16	1	C121-17511	DIFFERENTIAL FEED BAR
17	1	C121-17412	MAIN FEED BAR
18	1	CB1657-804-00T	DIFFERENTIAL FEED DOG
21	1	CSS-9111010-SP	SCREW 11/64-40 X 9.5
22	1	CRE-0500000-KO	E-RING
23	1	C118-26310	ADJUSTING LINK
24	1	CSD-0720271-SP	HINGE SCREW 7.2 X 2.7
25	1	C118-28563	DIFFERENTIAL FEED ROCKER ARM
26	1	C118-25304	PIN
27	1	C118-26401	PIN COVER
28	2	CSS-6080410-SP	SCREW 1/8-44 X 4.0
29	1	C118-28514	DIFFERENTIAL FEED ROCKER ASSEMBLY
30	1	CSM-6051202-TP	SCREW M5 X 0.8 X 12.0
31	1	CB1414-555-000	SLIDE BLOCK
32	1	CWP-0621016-SD	WASHER 6.2 X 13 X 1
33	1	CB1647-704-000-A	DIFFERENTIAL FEED LOCK NUT
34	1	CB1646-704-000-A	DIFFERENTIAL FEED HINGE SCREW
35	6	CSS-7060310-SP	SCREW 3/32-56 X 3.0
36	1	C121-19756	RUBBER PLATE ASSEMBLY
37	1	C121-19806	RUBBER PRESSURE PLATE
38	1	C121-19608	OIL SHIELD RUBBER
39	1	C121-19905	RUBBER COVER
40	1	C121-20002	RUBBER BASE PLATE
41	2	CSS-7090620-TP	SCREW 9/64-40 X 6.1
42	1	C121-19400	RUBBER BASE
43	1	C118-27607	OIL SHIELD RUBBER, LOWER
44	2	CSS-7060510-SP	SCREW 3/32-56 X 4.8
45	2	C122-82901	FEED BAR SUPPORT
46	1	C121-19509	RUBBER
47	1	C118-27904	RUBBER
48	1	CRO-4801201-00	RUBBER RING
49	1	C118-28308	SUPPORT, THROAT PLATE
50	2	CSL-4051231-SC	SCREW M5 X 12.0
51	4	CWP-0480856-SP	WASHER 4.8 X 8.4 X 0.8
52	4	CSM-4041055-SP	SCREW
53	4	CSS-6090620-SP	SCREW 9/64-40 X 6.0
54	1	C118-228605	DIFFERENTIAL FEED ROCKER
55	1	CSS-6661110-SP	SCREW 1/4-40 X 11.0
56	1	CB1645-704-000-A	BUSHING
57	1	CRO-0601501-00	RUBBER RING
58	1	C119-91502	SPRING
59	1	C122-83255	ROCKER SHAFT ASSEMBLY
60	1	CSS-4090515-SP	SCREW 9/64-40 X 5.0
61	1	C1222-83107	DIFFERENTIAL FEED GRADUATION
62	1	C115-29005	STOPPER

5. FEED MECHANISM COMPONENTS (1)



From the library of: Diamond Needle Corp

5. FEED MECHANISM COMPONENTS (1)

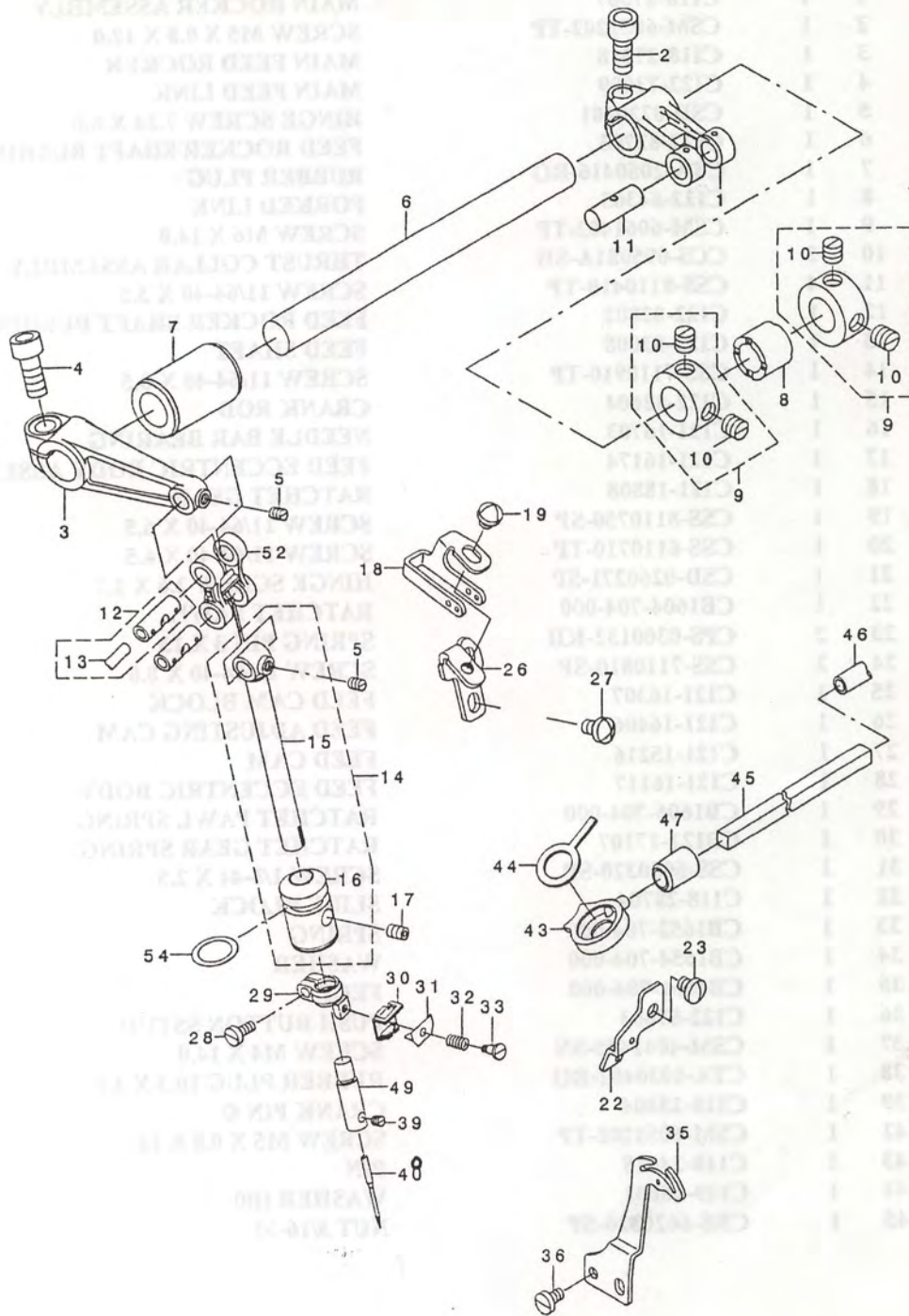


From the library of: Diamond Needle Corp

5. FEED MECHANISM COMPONENTS (1)

ITEM	QTY.	PART NUMBER	DESCRIPTION
1	1	C118-27367	MAIN ROCKER ASSEMBLY
2	1	CSM-6051202-TP	SCREW M5 X 0.8 X 12.0
3	1	C118-27318	MAIN FEED ROCKER
4	1	C122-73009	MAIN FEED LINK
5	1	CSD-0720601	HINGE SCREW 7.24 X 6.0
6	1	C122-82703	FEED ROCKER SHAFT BUSHING, FRONT
7	1	CTA-2050416-RO	RUBBER PLUG
8	1	C122-84303	FORKED LINK
9	1	CSM-6061402-TP	SCREW M6 X 14.0
10	2	CCS-095081A-SH	THRUST COLLAR ASSEMBLY 9.53 X 8.0
11	4	CSS-8110410-TP	SCREW 11/64-40 X 3.5
12	1	C122-82802	FEED ROCKER SHAFT BUSHING, REAR
13	1	C122-83008	FEED SHAFT
14	1	CSS-7110910-TP	SCREW 11/64-40 X 8.5
15	1	C122-82604	CRANK ROD
16	1	C121-16703	NEEDLE BAR BEARING
17	1	C121-16174	FEED ECCENTRIC BODY ASSEMBLY
18	1	C121-18808	RATCHET GEAR
19	1	CSS-8110750-SP	SCREW 11/64-40 X 6.5
20	1	CSS-6110710-TP	SCREW 11/64-40 X 6.5
21	1	CSD-0260271-SP	HINGE SCREW 2.6 X 2.7
22	1	CB1604-704-000	RATCHET PAWL
23	2	CPS-0300132-KH	SPRING PIN 3 X 13
24	2	CSS-7110810-SP	SCREW 11/64-40 X 8.0
25	1	C121-16307	FEED CAM BLOCK
26	1	C121-16406	FEED ADJUSTING CAM
27	1	C121-15216	FEED CAM
28	1	C121-16117	FEED ECCENTRIC BODY
29	1	CB1606-704-000	RATCHET PAWL SPRING
30	1	CB121-17107	RATCHET GEAR SPRING
31	1	CSS-6080320-SP	SCREW 1/8-44 X 2.5
32	1	C118-28704	SLIDE BLOCK
33	1	CB1652-704-000	SPRING
34	1	CB1654-704-000	WASHER
35	1	CB1651-704-000	FELT
36	1	C122-87603	PUSH BUTTON SSTUD
37	1	CSM-4041455-SN	SCREW M4 X 14.0
38	1	CTA-1030402-RO	RUBBER PLUG 10.3 X 4.0
39	1	C118-23804	CRANK PIN ©
42	1	CSM-6051202-TP	SCREW M5 X 0.8 X 12
43	1	C118-24018	PIN
44	1	C119-48601	WASHER (B0
45	1	CNS-6620320-SP	NUT 3/16-32

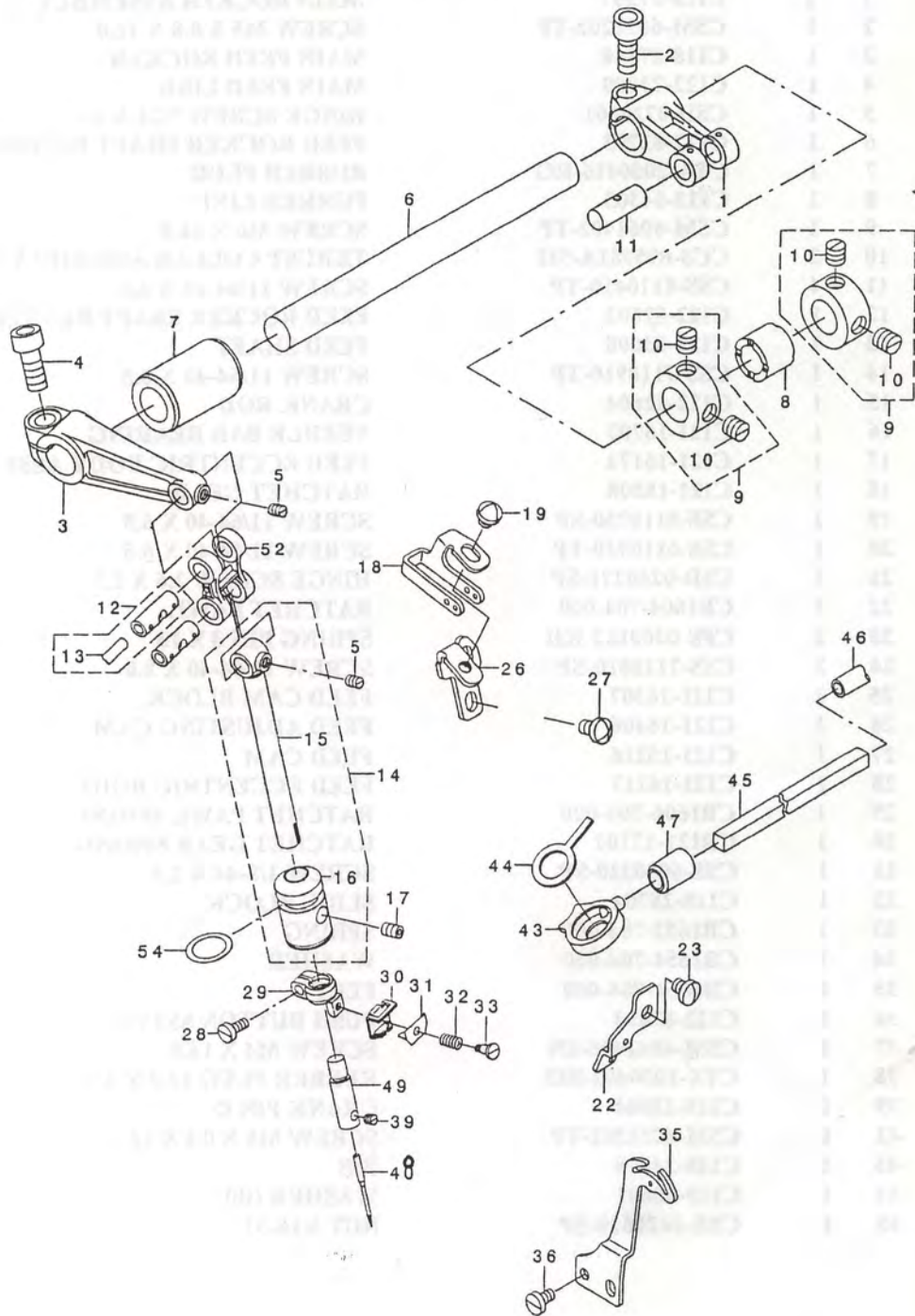
4. NEEDLE DRIVING SHAFT COMPONENTS



4. NEEDLE DRIVING SHAFT COMPONENTS

ITEM	QTY.	PART NUMBER	DESCRIPTION
1	1	C122-80707	FEED FORK CRANK
2	1	CSM-6061402-TP	SCREW M6 X 14.0
3	1	C122-80806	NEEDLE DRIVING ARM
4	1	CSM-6061402-TP	SCREW M6 X 14.0
5	2	CSS-8090530	SCREW 9/16-40 X 5.0
6	1	C122-97108	NEEDLE DRIVING SHAFT
7	1	C122-80202	BUSHING, FRONT
8	1	C122-80301	BUSHING, REAR
9	2	CCS-1201010-SH	THRUST COLLAR ASSEMBLY 12.0 X 10.0
10	4	CSS-866-610-TP	SCREW ¼-40 X 6.0
11	1	C118-23804	CRANK PIN (C)
12	2	C121-09955	LINK PIN (C) ASSEMBLY
13	0.1	CCQ-2520000-00	OIL WICK
14	1	C123-44589	NEEDLE HOLDER ASSEMBLY
15	1	C122-80509	NEEDLE HOLDER
16	1	C123-44800	NEEDLE HOLDER BUSHING
17	1	CSM-8040612-TP	SCREW M4 X 6.0
18	1	C122-81101	NEEDLE THREAD GUIDE
19	1	CSS-4110515-SP	SCREW 11/64-40 X 5.0
22	1	C122081705	TAKE UP LEVER GUIDE
23	1	CSM-4040855	SCREW
26	1	C121-12108	NEEDLE THREAD STAND
27	2	CSM-4040855	SCREW
28	1	CSS-6080720-SP	SCREW
29	1	C122-80608	NEEDLE CLAMP HOLDER
30	1	C122-80905	NEEDLE THREAD PRESSER GUIDE
31	1	C121-10904	NEEDLE THREAD PRESSER PLATE
32	1	C121-10805	NEEDLE THREAD PRESSER SPRING
33	1	CCSD-0280401-SL	HINGE SCREW 2.8 X 4.0
35	1	C122-81408	NEEDLE THREAD TAKE-UP LEVER
36	2	CSS-6090670-TP	SCREW 9/64-40 X 6.0
39	1	CSS-8080310-TP	SCREW 1/8-44 X 2.8
43	1	C121-12207	COVER
44	1	C121-12306	FELT (A)
45	1	C122-53308	FELT (B)
46	0.1	CBT-0600402-EA	OIL TUBE
47	1	CTA-0951301-RO	RUBBER PLUG
48	1		B 27 NEEDLE
49	1	C121-48607	NEEDLE CLAMP
52	1	C122-80400	NEEDLE DRIVING LINK
54	1	CRO-1082401-00	RUBBER RING

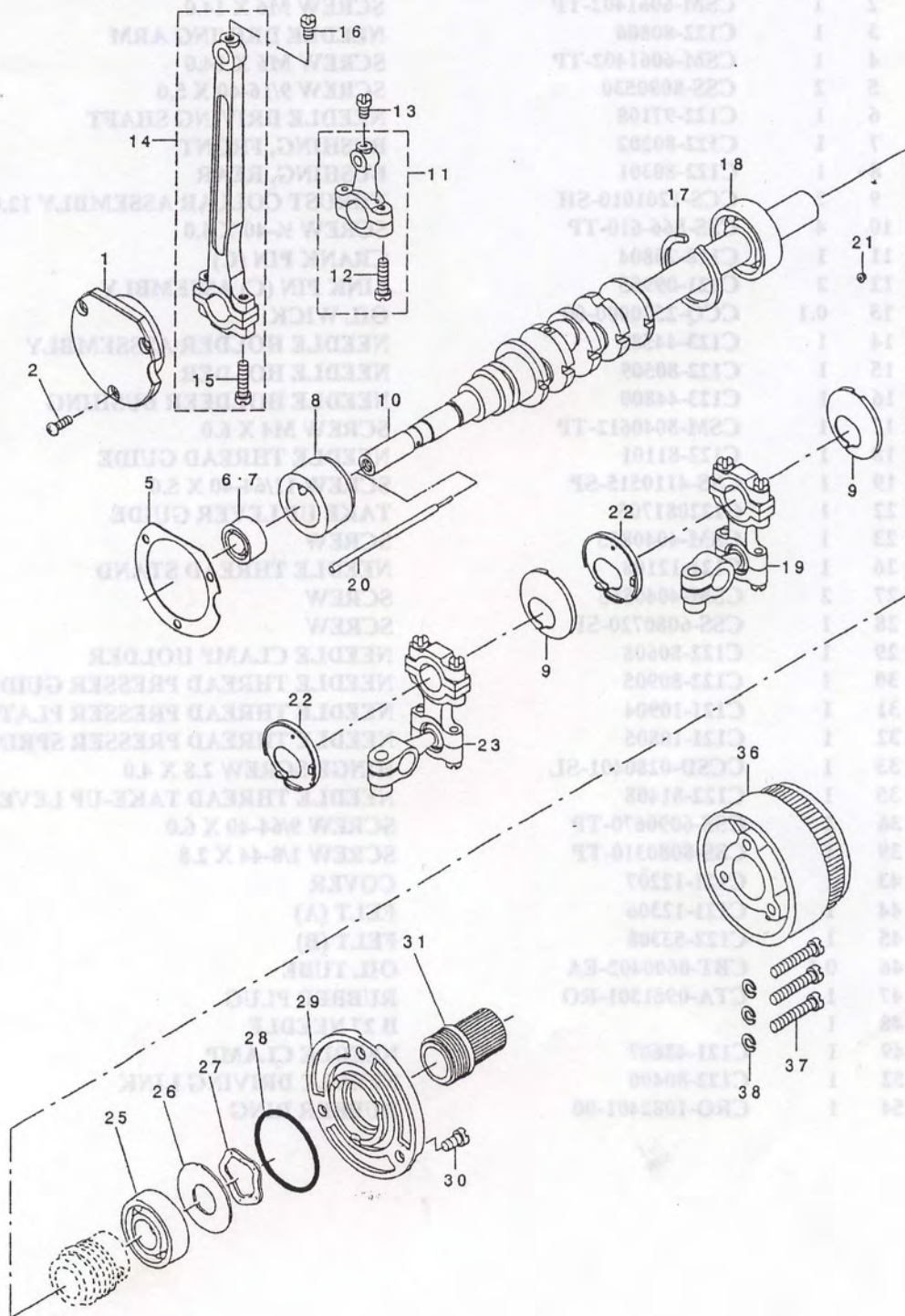
4. NEEDLE DRIVING SHAFT COMPONENTS



4. NEEDLE DRIVING SHAFT COMPONENTS

ITEM	QTY.	PART NUMBER	DESCRIPTION
1	1	C122-80707	FEED FORK CRANK
2	1	CSM-6061402-TP	SCREW M6 X 14.0
3	1	C122-80806	NEEDLE DRIVING ARM
4	1	CSM-6061402-TP	SCREW M6 X 14.0
5	2	CSS-8090530	SCREW 9/16-40 X 5.0
6	1	C122-97108	NEEDLE DRIVING SHAFT
7	1	C122-80202	BUSHING, FRONT
8	1	C122-80301	BUSHING, REAR
9	2	CCS-1201010-SH	THRUST COLLAR ASSEMBLY 12.0 X 10.0
10	4	CSS-866-610-TP	SCREW ¼-40 X 6.0
11	1	C118-23804	CRANK PIN (C)
12	2	C121-09955	LINK PIN (C) ASSEMBLY
13	0.1	CCQ-2520000-00	OIL WICK
14	1	C123-44589	NEEDLE HOLDER ASSEMBLY
15	1	C122-80509	NEEDLE HOLDER
16	1	C123-44800	NEEDLE HOLDER BUSHING
17	1	CSM-8040612-TP	SCREW M4 X 6.0
18	1	C122-81101	NEEDLE THREAD GUIDE
19	1	CSS-4110515-SP	SCREW 11/64-40 X 5.0
22	1	C122081705	TAKE UP LEVER GUIDE
23	1	CSM-4040855	SCREW
26	1	C121-12108	NEEDLE THREAD STAND
27	2	CSM-4040855	SCREW
28	1	CSS-6080720-SP	SCREW
29	1	C122-80608	NEEDLE CLAMP HOLDER
30	1	C122-80905	NEEDLE THREAD PRESSER GUIDE
31	1	C121-10904	NEEDLE THREAD PRESSER PLATE
32	1	C121-10805	NEEDLE THREAD PRESSER SPRING
33	1	CCSD-0280401-SL	HINGE SCREW 2.8 X 4.0
35	1	C122-81408	NEEDLE THREAD TAKE-UP LEVER
36	2	CSS-6090670-TP	SCREW 9/64-40 X 6.0
39	1	CSS-8080310-TP	SCREW 1/8-44 X 2.8
43	1	C121-12207	COVER
44	1	C121-12306	FELT (A)
45	1	C122-53308	FELT (B)
46	0.1	CBT-0600402-EA	OIL TUBE
47	1	CTA-0951301-RO	RUBBER PLUG
48	1		B 27 NEEDLE
49	1	C121-48607	NEEDLE CLAMP
52	1	C122-80400	NEEDLE DRIVING LINK
54	1	CRO-1082401-00	RUBBER RING

3. CRANKSHAFT COMPONENTS

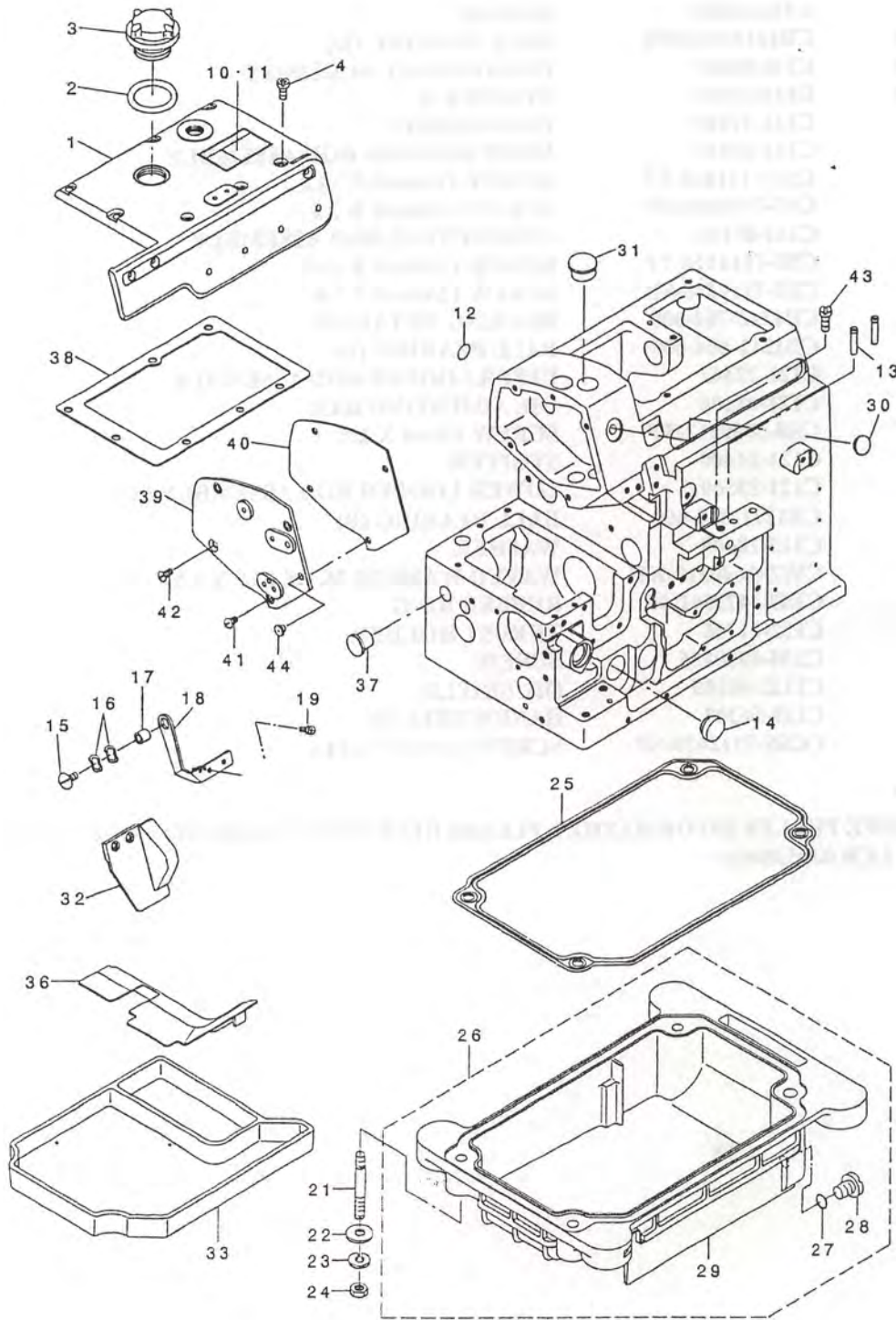


3. CRANKSHAFT COMPONENTS

ITEM	QTY.	PARTNUMBER	DESCRIPTION
1	1	C123-43406	CRANKSHAFT BUSHING (D)
2	3	CSM-4040855-SP	SCREW
5	1	C121-08403	GASKET
6	1	CB1215-804-000	BALL BEARING (D)
8	1	C121-08007	CRANKSHAFT BUSHING ©
9	2	C121-24509	STOPPER ®
10	1	C121-07108	CRANKSHAFT
11	1	C121-32155	KNIFE DRIVING ROD ASSEMBLY
12	1	CSS-7111810-TP	SCREW 11/64-40 X 18.0
13	2	CSS-7110840-SP	SCREW 11/64-40 X 7.8
14	1	C121-09153	CONNECTING ROD ASSEMBLY
15	2	CSS-7111810-TP	SCREW 11/64-40 X 18.0
16	1	CSS-7110840-SP	SCREW 11/64-40 X 7.8
17	1	CB1212-704-000	BEARING RETAINER
18	1	CB1211-804-000	BALL BEARING (B)
19	1	C121-22362	UPPER LOOPER ROD ASSEMBLY
20	1	C121-08106	OIL ADJUSTING BAR
21	5	CSS-5080212-TP	SCREW 1/8-44 X 2.0
22	2	C121-24400	STOPPER
23	1	C121-23360	LOWER LOOPER ROD ASSEMBLY (A)
25	1	CB1211-804-000	BALL BEARING (B)
26	1	C115-10609	WASHER
27	1	CWZ-2640310-KH	WAVED WASHER 26.4 X 33.9 X 3.5
28	1	CRO-3473501-00	RUBBER RING
29	1	C122-71706	THRUST HOLDER
30	3	CSM-4050855	SCREW
31	1	C1222-80103	OIL SHIELD
36	1	C119-56307	HANDWHEEL (B)
37	3	CCSS-7112420-SP	SCREW 11/64-40 X 24.0

FOR DRIVE PULLEY INFORMATION, PLEASE REFERENCE DRAWING 4700.00106.00;
ITEM# LCB.0305.00025

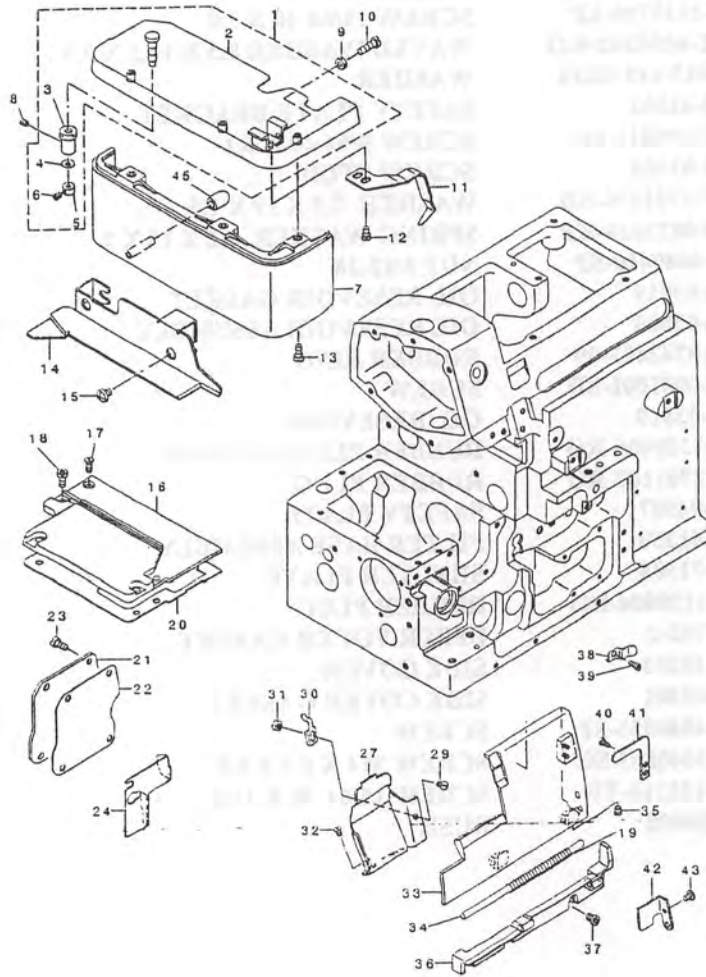
2. FRAME COMPONENTS (2)



2. FRAME COMPONENTS (2)

ITEM	QTY.	PARTNUMBER	DESCRIPTION
1	1	C122-70203	UPPER COVER
2	1	CRO-1952401-00	RUBBER RING
3	1	CB3530-555-000	OIL SIGHT WINDOW
4	4	CSM-4051255-SP	SCREW M5 X 12.0
12	1	C100-04109	GROUND MARK
13	2	C118-05207	THREAD GUIDE, LARGE
14	1	CTA-1871602-RO	RUBBER PLUG
15	1	CSS-5110710-SP	SCREW 11/64-40 X 7.0
16	2	CWZ-0850302-KO	WAVED WASHER 8.5 X 12.5 X 0.3
17	1	CB3013-141-HOA	WASHER
18	1	C123-42002	SAFETY PLATE BRACKET
19	2	CSS-7090611-SL	SCREW 9/64-40 X 6.1
21	4	C115-03703	SCREW STUD
22	4	CWP-0751576-SD	WASHER 7.5 X 19 X 1.5
23	4	CWS-0822010-KP	SPRING WASHER 8.2 X 15 X 2
24	4	CNS-6680410-SP	NUT 9/32-28
25	1	C115-03919	OIL RESEVOIR GASKET
26	1	C115-03885	OIL RESEVOIR ASSEMBLY
27	1	CRO-0742401-00	RUBBER RING
28	1	CSM-0081001-SD	SCREW
29	1	C115-03810	OIL RESEVOIR
30	1	CTA-1250406-RO	RUBBER PLUG 12.5 X 4.0
31	1	CTA-1701107-RO	RUBBER PLUG
32	1	C121-04907	SAFETY PLATE
33	1	C118-41350	FILTER BASE ASSEMBLY
36	1	C122-71904	SHELTER PLATE
37	1	CTA-1120804-RO	RUBBER PLUG
38	1	C122-703-2	UPPER VOCER GASKET
39	1	C123-45203	SIDE COVER
40	1	C121-00301	SIDE COVER GASKET
41	1	CSM-4040855-SP	SCREW
42	1	CSM-1040801-SC	SCREW M4 X 0.7 X 8.0
43	1	CSS-9151210-TP	SCREW 15/64-40 X 11.8
44	1	C122-58000	BUSH

1. FRAME COMPONENTS (1)

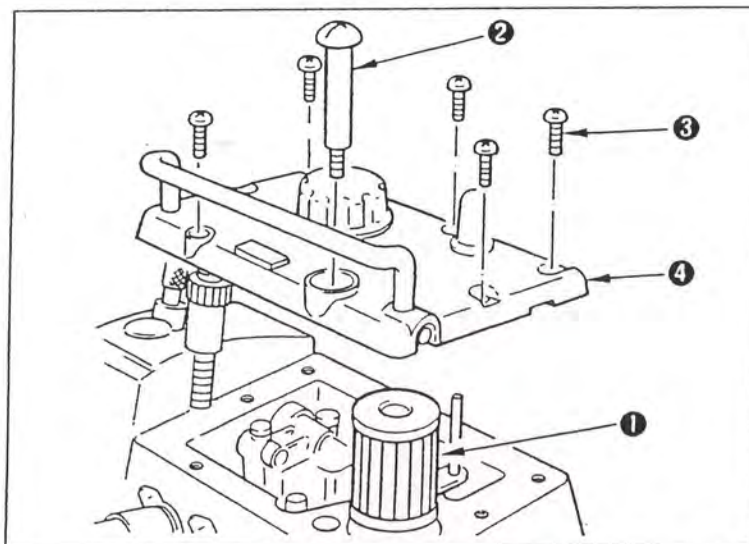


1. FRAME COMPONENTS (1)

ITEM	QTY.	PART NUMBER	DESCRIPTION
1	1	C121-05359	CLOTH PLATE ASSEMBLY
2	1	C121-02752	CLOTH PLATE
3	1	C115-01301	ECCENTRIC BUSHING
4	1	CWZ-0420350-KP	DISC SPRING
5	1	CCS-0400671-SD	THRUST HOLDER
6	1	CSM-8040302-TP	SET SCREW
7	1	C119-49005	CLOTH BASE COVER
8	1	CSS-8110410-TP	SCREW 11/64-40 X 3.5
9	1	CMS-6110420-SP	NUT 11/64-40
10	1	CSS-6111440-SP	SCREW 11/64-40 X 14.0
11	1	C118-10207	STOPPER
12	2	CSS-7110510-SP	SCREW 11/64-40 X 5.0
13	3	CSS-4091015-SP	SCREW 9/64-40 X 10.0
14	1	C123-42101	CLOTH PLATE SSIDE COVER
15	2	CSS-4120615-SP	SCREW 3/16-28 X 6.0
16	1	C123-44503	FEED MECHANISM COVER
17	1	CSM-1040801	SCREW M4 X 0.7 X 8.0
18	4	CSM-4040855-SP	SCREW
19	1	CB-1140-716-000	SPRING
20	1	C122-50601	GASKET
21	1	C119-51100	COVER
22	1	C122-70500	GASKET
23	4	CSM-4040855	SCREW
24	1	C121-02307	CHIP GUARD COVER, LEFT
26	2	CSS-7110510-SP	SCREW 11/64-40 X 5.0
27	1	C122-86803	CLOTH WASTE VOCER
29	1	CSS-2090520-SL	SCREW 9/64-40 X 5.0
30	1	C121-01515	CLOTH WASTE STOPPER
31	1	CNS-6090310-SN	NUT 9/64-40
32	2	CSS-3090610-SP	SCREW 9/64-40 X 6.0
33	1	C121-01309	LOOPER COVER
34	1	C118-03004	LOOPER COVER HINGE PIN
35	1	CSS-8110410-TP	SCREW 11/64-40 X 3.5
36	1	C123-44909	LOOPER COVER BRACKET
37	3	CSM-4041055-SP	SCREW
38	1	C121-03404	LOOPER COVER PRESSER SPRING
39	1	CSM-4040655-SP	SCREW M4 X 6.0
40	1	CSS-7090530-SP	SCREW 9/64-40 X 4.5
41	1	C121-03206	LOOPER COVER PRESSER PLATE
42	1	C121-01408	GUIDE PLATE
43	1	CSS-7090610-SP	SCREW 9/64-40 X 6.0
45	1	C118-02204	RUBBER P-LUG

PARTS LISTS

4. CHECKING THE CARTRIDGE FILTER AND REPLACING IT

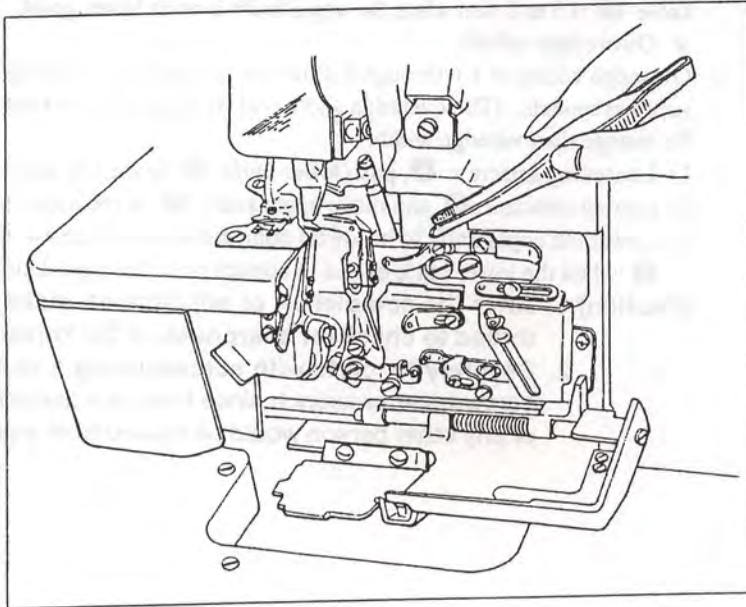


1. After a long period of usage, cartridge filter ❶ may become clogged with dust.
If the machine is left in this state, the dirty oil may fail to pass through cartridge filter ❶, and the machine may wear out abnormally, or a seizure may result.
* Cartridge filter ❶ should normally be checked once every six months, and cleaned or replaced accordingly.
2. How to inspect the cartridge filter and replaced it
 - 1) Remove first oil discharging screw ❷.
 - 2) Remove screws ❸, and lift top cover ❹ just above until it comes off.
(Caution) If top cover ❹ is shifted sideward, the oil amount pointer bar and the cartridge filter may be damaged.
 - 3) Remove cartridge filter ❶ and check it. If the filter is found to be abnormal, clean the relevant components, or replace cartridge filter ❶.
 - 4) Re-insert cartridge filter ❶ into its proper position and return the cover. Do not forget to put back the setscrews and tighten them up.

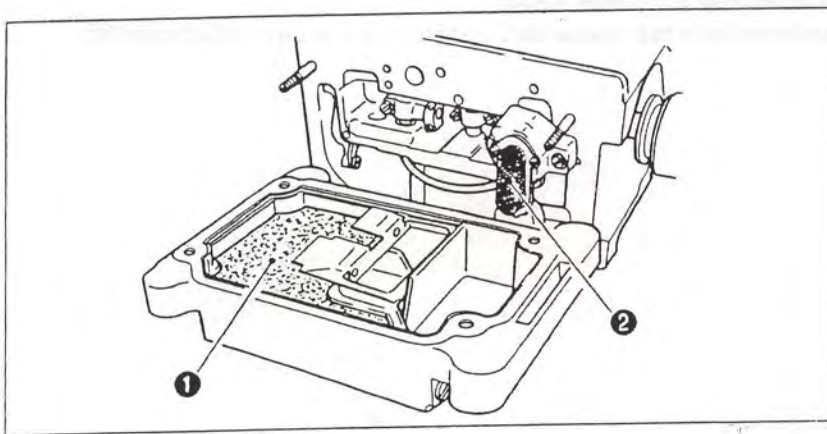
2. CLEANING THE MACHINE HEAD

- 1) Clear lint from inside the looper cover and the needle bar components about once or twice a day. If not, oil may leak and the sewing material will be soiled.

(Caution) Do not wipe the coated surface of the machine head with lacquer thinner. Doing so will damage the coated surface.



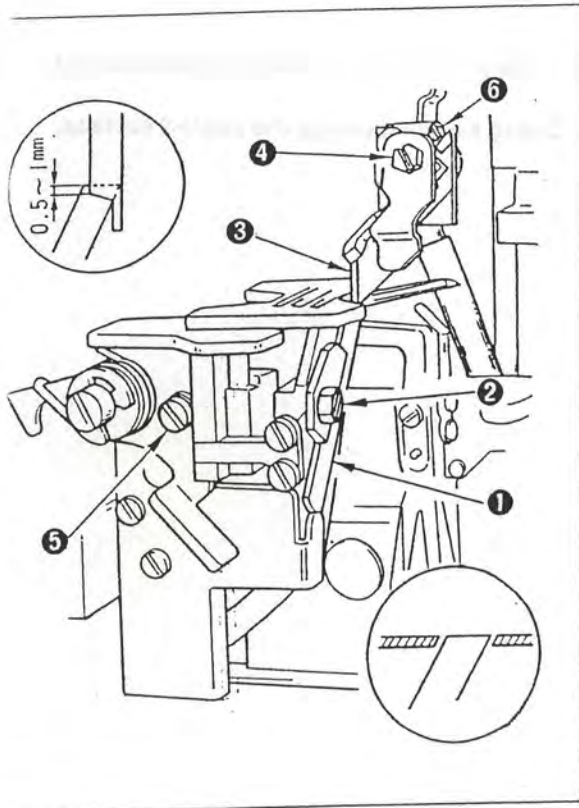
3. CLEANING THE FILTER AND PUMP NET



- 1) To use the sewing machine for an extended period of time, clean filter ① and pump net ② periodically twice or three times a year. If the filter and pump net are clogged with dusts, etc., the machine components may be seized or worn out extraordinarily. So, carefully check the filter and pump net.
- 2) If the lubricating oil in the machine is stained, change the oil also at the time of cleaning. Refer to "III . 1. LUBRICATION" for how to change the oil.

MAINTENANCE . MANUTENZIONE

1. KNIVES AND OVEREDGE WIDTH .



★ Height of the lower knife

Loosen setscrew **2** and adjust the height of lower knife **1** so that its edge is flush with the throat plate surface.

★ Height of the upper knife

Loosen setscrews **4**, and perform adjustment so that upper knife **3** overlaps lower knife **1** 0.5 to 1 mm when the upper knife is at its lowest point.

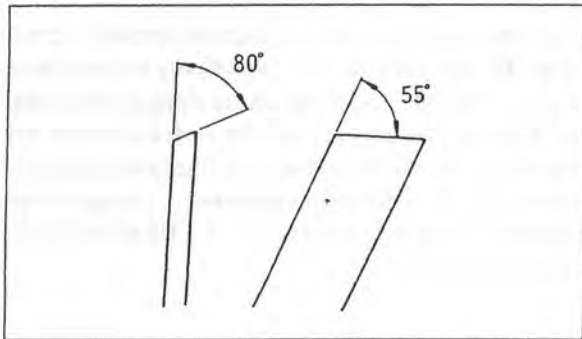
★ Overedge width

Overedge widths of 1.6 through 6.4 mm are provided by changing the parts or by using subclass models. (The overedge width will be slightly larger than the knife cut width)
To change the overedge width:

- 1) Loosening setscrew **5**, push lower knife **1** to the left and fix it.
- 2) Loosen setscrew **6** and move upper knife **3** as required, then fix it.
- 3) Lower the upper knife to its lowest point and loosen setscrew **5**. Tighten setscrew **5** when the lower knife comes in contact with the upper knife.

(Caution) 1. After the completion of adjustment, make the knives cut a thread to check for sharpness of the knives.

2. Securely fix parts with screws using a comparatively large screwdriver or wrench since there is a danger that the operator or any other person would be injured from a parts that come off.

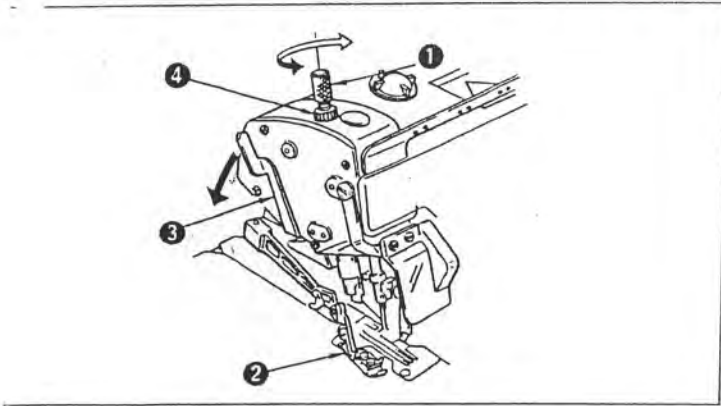


* Resharpener the lower knife

When the lower knife has become dull, resharpen it as shown in the figure left.

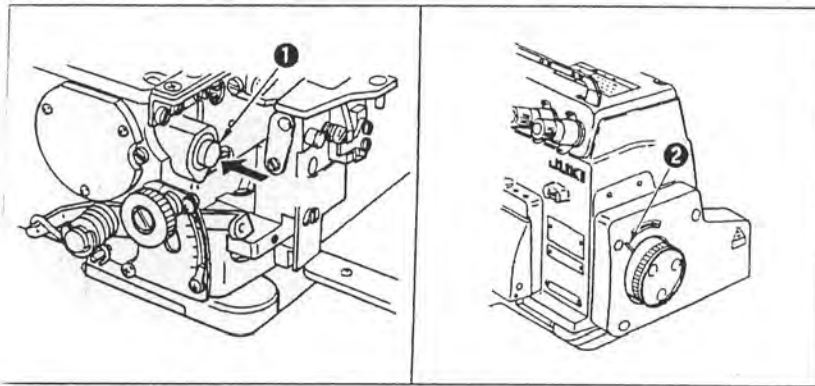
MAINTENANCE OF SEWING HEAD

5. ADJUSTING THE PRESSURE OF THE PRESSER FOOT



- 1) Adjust the pressure of the presser foot by loosening first nut **4** and turning presser foot adjust screw **1** .
When the adjust screw is turned clockwise, the pressure will increase. When it is turned counterclockwise, the pressure will decrease. After the adjustment, be sure to turn nut **4** without fail.
- 2) To open presser foot **2** sideward, raise the needle to the highest position of its stroke and lower presser bar lifting lever **3** .

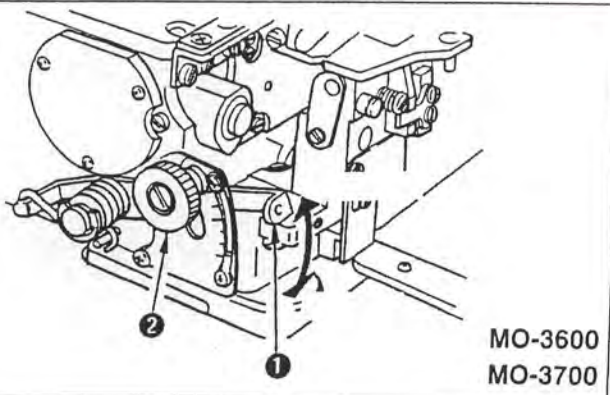
6. ADJUSTING THE STITCH LENGTH



- 1) Slowly turn the handwheel as you keep depressing pushbutton **1**, and you will find a point at which the pushbutton goes in farther.
- 2) With the above condition maintained, align the desired scale mark on the handwheel with mark **2** on the belt cover.
- 3) Reset the pushbutton after setting the dial.

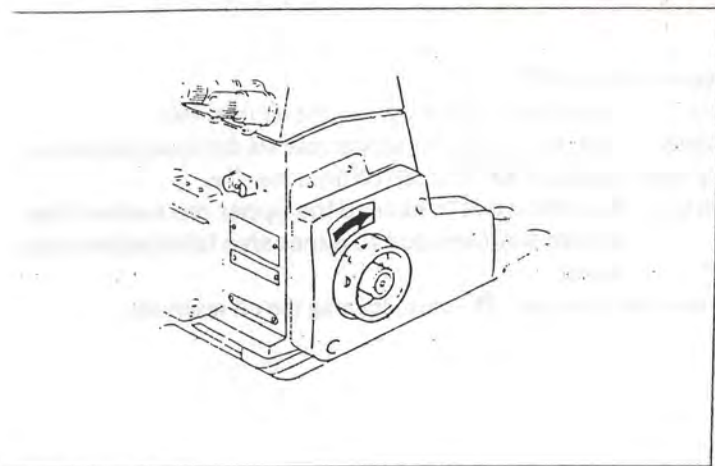
(Caution) Confirm that pushbutton **1** has returned to its original position before starting works since there is a danger that the machine parts may be damaged or the operator or any other person may be injured.

7. DIFFERENTIAL FEED MECHANISM



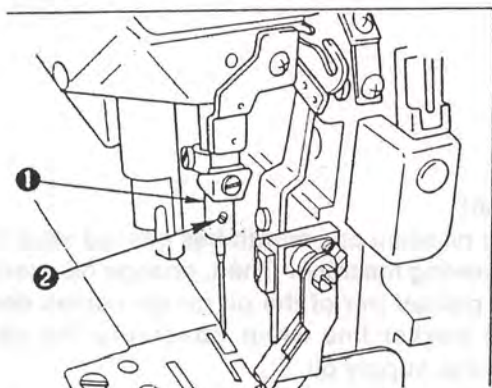
- 1) Loosen differential feed lock nut **2** . Move lever **1** up for stretching stitch or down for gathering stitch.
- 2) When the differential feed adjusting lever is set to graduation S, the machine will perform stretching with a differential feed ratio of 1:0.7. When the lever is set to graduation 0, the differential feed ratio between the main feed dog and the differential feed dog will be 1:1.
- 3) The maximum differential feed ratio for gathering is 1:2. The graduations beyond 0 are used as reference.
(It can be set to 1:4 depending on the adjustment of the internal mechanism of the sewing machine. MO-3700)

2. CHECKING THE DIRECTION OF ROTATION



- 1) The correct direction of the sewing machine is clockwise. Never allow the machine to rotate in the reverse direction. If the machine rotates counterclockwise, the oil pump will fail to function resulting in seizure.

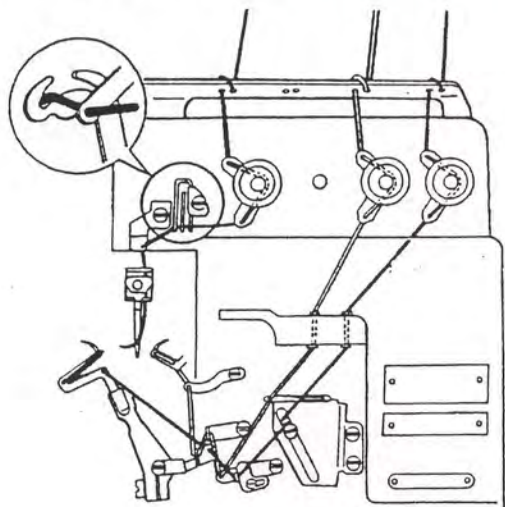
3. ATTACHING NEEDLES



Attach the needles according to the following procedure:

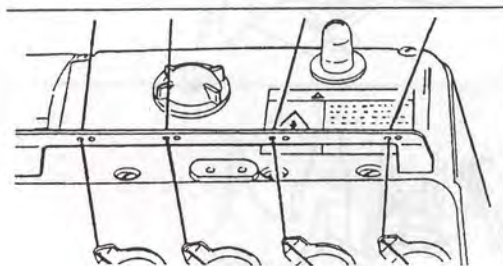
- 1) Bring needle clamp **1** to the highest position.
- 2) Loosen needle clamp screw **2**, and fully insert the needle into the needle clamp hole with the needle recess facing backwards as viewed from the operator's side.
- 3) Tighten the needle clamp screw **2**.

4. THREADING THE MACHINE

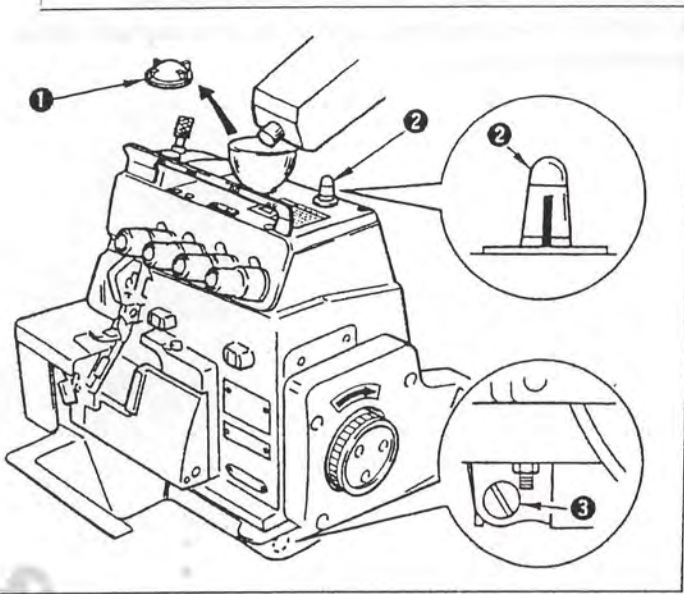


(Caution)

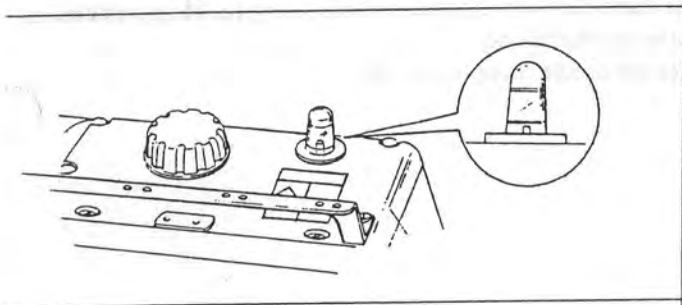
When using an untwisted thread such as wooly nylon thread or weak thread, do not wind it round the Intermediate thread guide.



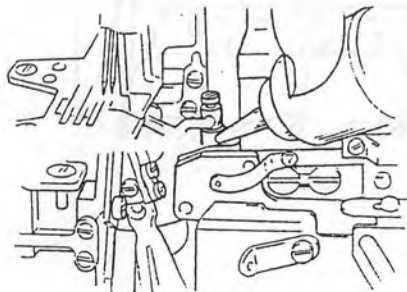
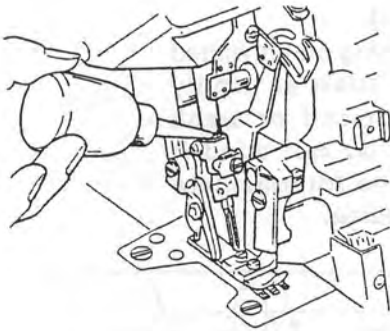
1. LUBRICATION



- 1) Remove oil cap ❶ .
 - 2) Pour New Defrix Oil No. 2 into the oil reservoir.
 - 3) Supply oil until the pointer bar almost reaches the upper red marker line when oil gauge ❷ is observed from the side.
- (Caution)** Be careful not to exceed the upper red marker line, or else troubles due to excessive lubrication may result.
- 4) Remove oil drain cap ❸ when draining the oil reservoir.



- (Caution)**
Change oil when one month has passed after the first set-up of the sewing machine. Then, change oil every six months.
- If the pointer bar of the oil gauge comes down under the lower marker line when observing the oil gauge from sideward, supply oil.
 - Apply two or three drops of oil to the needle bar and upper looper guide when operating the machine for the first time after set-up or after a long period of disuse.



PREPARATION AND OPERATION OF SEWING HEAD

CONTENTS

A. PREPARATION AND OPERATION OF SEWING HEAD	
1. LUBRICATION	1
2. CHECKING THE DIRECTION OF ROTATION	2
3. ATTACHING NEEDLES	2
4. THREADING THE SEWING HEAD	2
5. ADJUSTING PRESSURE OF PRESSER FOOT	3
6. ADJUSTING THE STITCH LENGTH	3
7. DIFFERENTIAL FEED MECHANISM	3
B. MAINTENANCE OF SEWING HEAD	
1. KNIVES AND OVEREDGE WIDTH	5
2. CLEANING THE SEWING HEAD	6
3. CLEANING THE FILTER AND PUMP HEAD	6
4. CHECKING THE CARTRIDGE FILTER AND REPLACING	7
C. PART LISTS	
1. FRAME COMPONENTS (1)	10
2. FRAME COMPONENTS (2)	12
3. CRANKSHAFT COMPONENTS	14
4. NEEDLE DRIVING SHAFT COMPONENTS	16
5. FEED MECHANISM COMPONENTS (1)	18
6. FEED MECHANISM COMPONENTS (2)	20
7. UPPER SPREADER & LOWER LOOPER COMPONENTS	22
8. PRESSER FOOT COMPONENTS (1)	24
9. PRESSER FOOT COMPONENTS (2)	26
10. UPPER KNIFE COMPONENTS	27
11. LOWER KNIFE COMPONENTS	28
12. LUBRICATION MECHANISM COMPONENTS	30



12 LUBRICATION MECHANISM COMPONENTS

