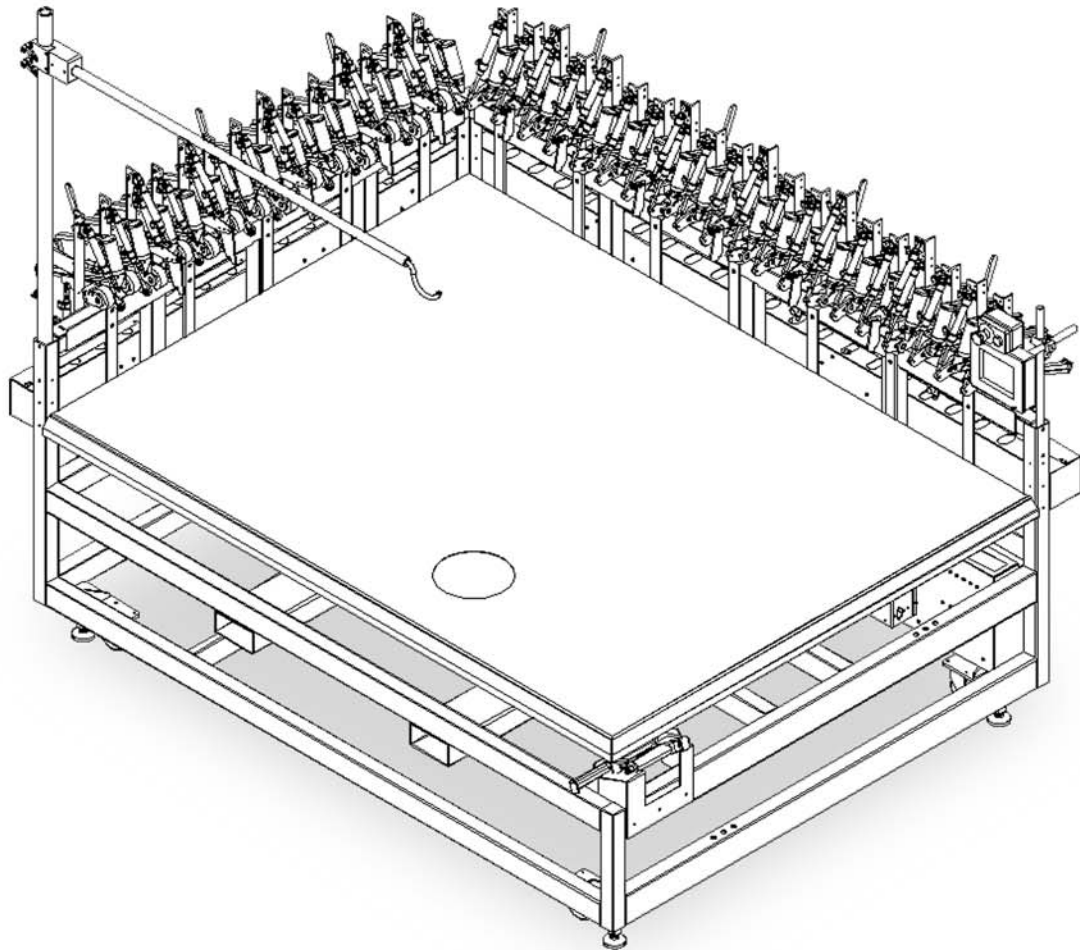


model: **1331A**  
Foundation Stretcher



# Part Lists

"Sudden Service"®



From the library of: Diamond Needle Corp

## Atlanta Attachment Company

401 Industrial Park Dr.  
Lawrenceville, GA 30045  
Phone: 770-963-7369  
www.atlatt.com



**One-Stop Shopping**  
for Expendable Replacement  
Parts for AAC & Other Bedding  
Equipment Suppliers  
Toll Free: **1-866-885-5100**

www.atlantapartsdepot.com

Revision 1.5  
Updated: August 14, 2006

# Atlanta Attachment Company, Inc.

## Confidential And Proprietary Information

The materials contained herein are confidential and proprietary information of Atlanta Attachment Company. In addition to any confidentiality and non-disclosure obligations that currently exist between you and Atlanta Attachment Company, your use of these materials serves as an acknowledgment of the confidential and proprietary nature of these materials and your duty not to make any unauthorized use or disclosure of these materials.

All materials contained herein are additionally protected by United States Copyright law and may not be used, disclosed, reproduced, distributed, published or sold without the express written consent of Atlanta Attachment Company, which consent may be withheld in Atlanta Attachment Company's sole discretion. You may not alter or remove any copyright, trademark or other notice from copies of these materials.

## Patents & Patents Pending

The sale of this product does not sell or otherwise transfer any license or other rights under any U.S. Patent or other corresponding foreign patent.

This equipment is protected by one or more of the following patents:

US patents: 4,038,933; 4,280,421; 4,432,294; 4,466,367; 4,644,883; 4,886,005; 5,134,947; 5,159,889; 5,203,270; 5,307,750; 5,373,798; 5,437,238; 5,522,332; 5,524,563; 5,562,060; 5,634,418; 5,647,293; 5,657,711; 5,743,202; 5,865,135; 5,899,159; 5,915,319; 5,918,560; 5,924,376; 5,979,345; 6,035,794

Foreign patents - 2,084,055; 2,076,379; 2,177,389; 2,210,569; 4-504,742; 8-511,916; 9-520,472; 0,537,323; 92,905,522.6; 95,935,082.8; 96,936,922.2; 5,159,889; 5,203,270.

Other U.S. and Foreign Patents Pending.



## IMPORTANT

**It is important to read and understand the information contained within this manual before attempting to operate the machine. Atlanta Attachment Co., Inc. shall not be held liable for damage resulting from misuse of the information presented within, and reserves the right to change the information contained within, without prior notification.**

Atlanta Attachment Company  
401 Industrial Park Drive  
Lawrenceville, Georgia 30045  
Phone: (770) 963-7369  
Fax: (770) 963-7641  
Email: sales@atlatt.com



## Table Of Contents

Assembly Drawings & Parts Lists .....	1
1331001 Main Assembly .....	3
1278-6010 Start/Stop Button Assembly .....	5
1331040 Rotate Lift Cylinder Assembly .....	6
1331042 Pivot Lift Assembly .....	7
1331130 Staple Gun Assembly, Long Side .....	9
1331140 Table Top Assembly .....	11
1331150 Staple Gun Assembly, Short Side .....	13
1331178 Pneumatic Panel Assembly .....	14
1331185 Overhead Staple Gun Holder Assembly .....	15
1331200 Cover Stretch Roller Assembly .....	17
1331250 Cover Stretch Assembly .....	19
1331260 Cover Stretch Assembly w/ Switch .....	21
1331270 Cover Stretch Roller Assembly .....	23
1331280 Cover Stretch Assembly w/ Hook .....	25
1331309 Staple Gun Assembly .....	26
1331349 Staple Gun Assembly .....	27
1331900 Control Box Assembly .....	29
1331903 Track Assembly, Long Side .....	30
1331908 Track Assembly, Short Side .....	31
13452000C Column Lift Assembly .....	33
1331-PD Pneumatic Diagram .....	34
1331-WD Wiring Diagram .....	35
Notes .....	36



## Assembly Drawings & Parts Lists

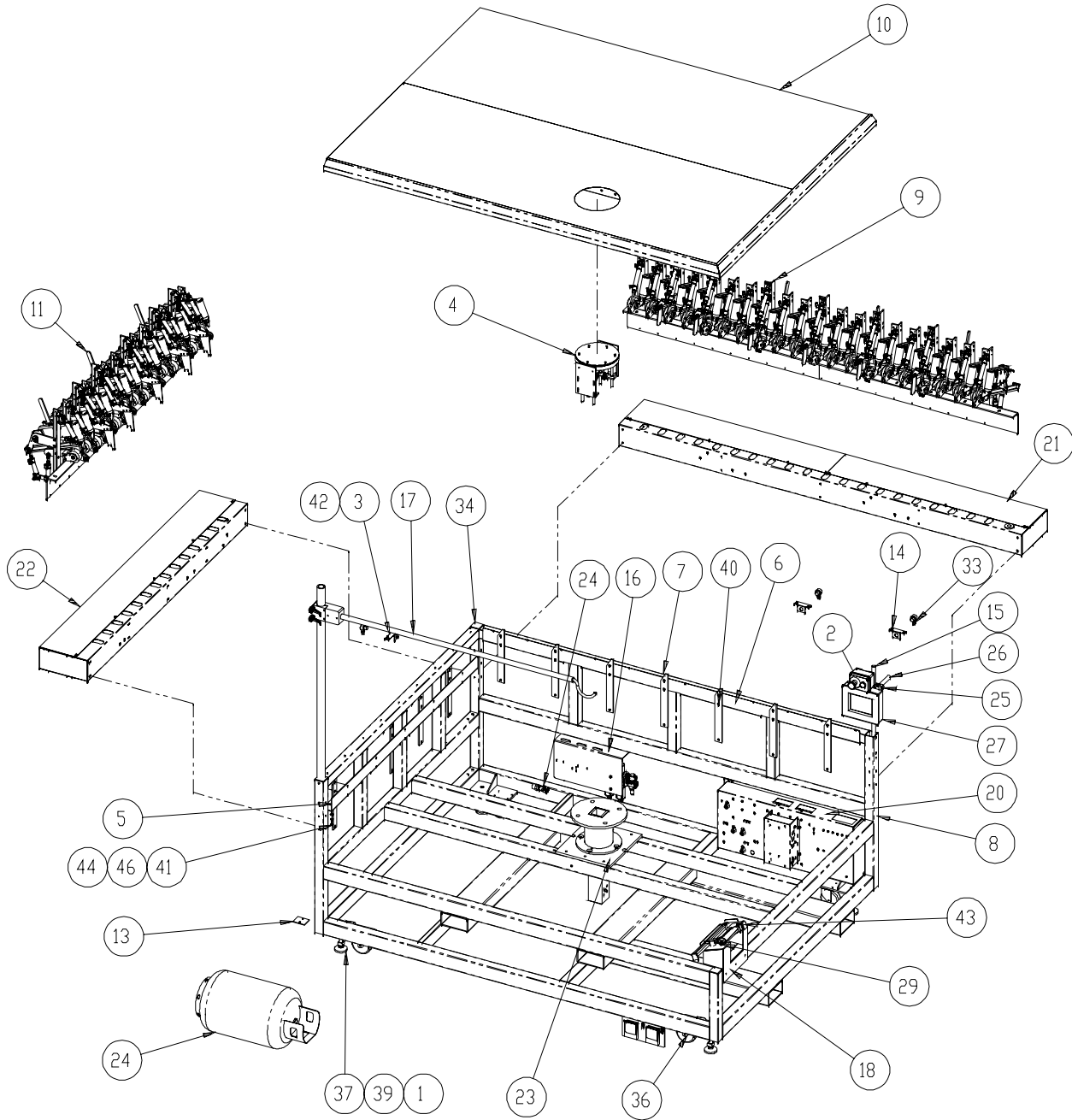
The materials contained herein are confidential and proprietary information of Atlanta Attachment Company. In addition to any confidentiality and non-disclosure obligations that currently exist between you and Atlanta Attachment Company, your use of these materials serves as an acknowledgment of the confidential and proprietary nature of these materials and your duty not to make any unauthorized use or disclosure of these materials.



**One-Stop Shopping**  
For Expendable Replacement Parts for AAC & Other Bedding Equipment Suppliers  
Toll Free: **1-866-885-5100**  
www.atlantapartsdepot.com • sales@atlantapartsdepot.com

From the library of: Diamond Needle Corp





From the library of: Diamond Needle Corp



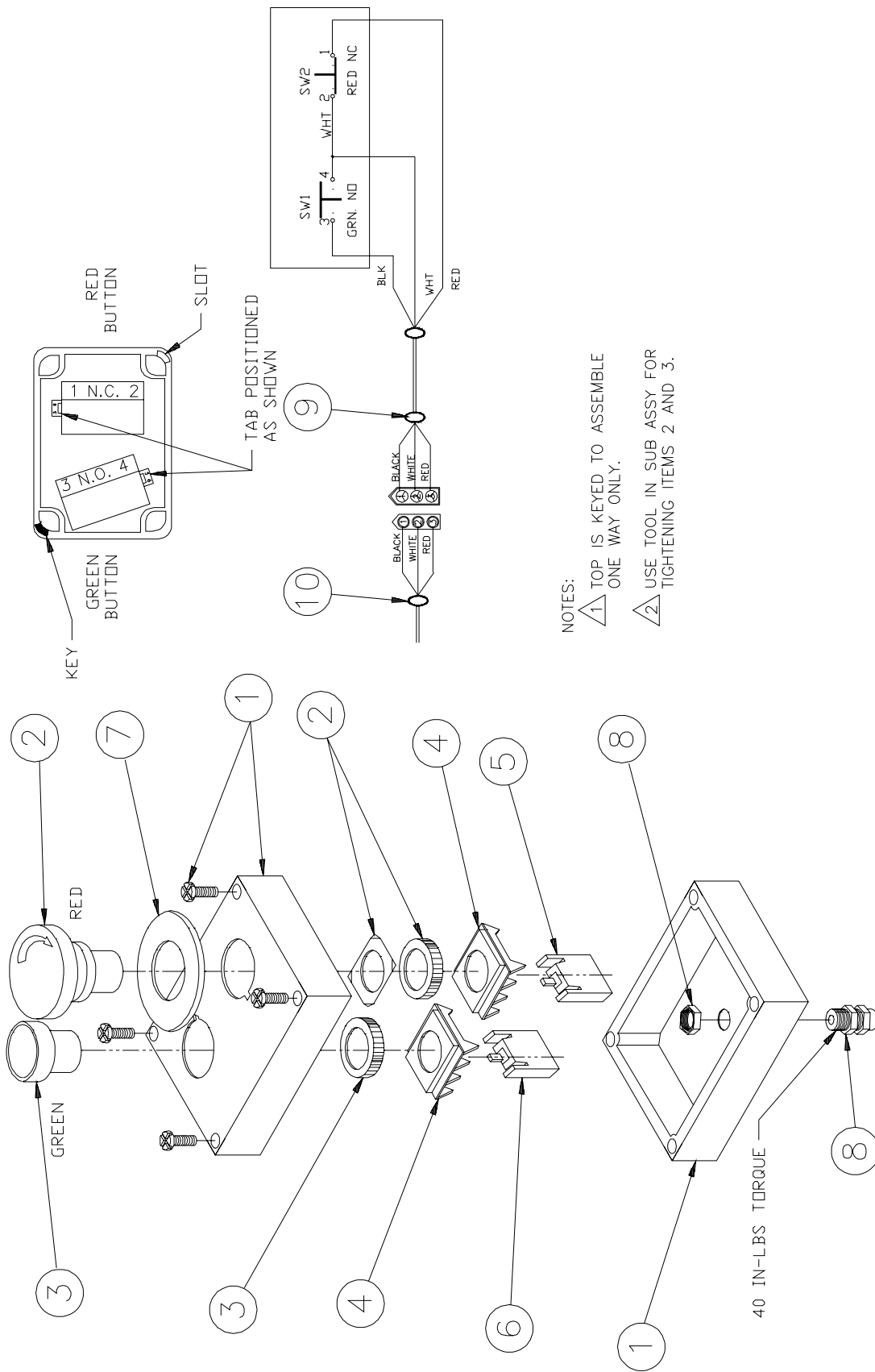


**1331001 Main Assembly**

#	Part #	Description	Qty	Pg	#	Part #	Description	Qty	Pg
1	0411-1063	Threaded Rod	4		25	28201	Cross Block	1	
2	1278-6010	Start/Stop Button Assy	1	5	26	40-112A	Touch Screen Mnt	1	
3	1331009	Eye Brkt	1		27	4080-003	Serial Bus Controller	1	
4	1331042	Pivot Lift Assy	1	7	28	AA2000F-03	Flow Control	14	
5	1331062	Support Brkt	1		29	AAQMC-3-4	Straight Fitting	1	
6	1331064	Support Brkt	1		30	AAVBG35A	Coiled Hose	1	
7	1331065	Position Bumper	12		31	AAVS125	Shuttle Valve	1	
8	1331101	Frame	1		32	CCCL12F	Clamp Collar	1	
9	1331130	Staple Gun Assy,Long Side	1	9	33	FFT18FF25Q	Electric Eye	3	
10	1331140	Table Top Assy	1	11	34	MM132-2X2A	End Cap	3	
11	1331150	Staple Gun Assy,Short Side	1	13	35	MM40450010	Slide Lock Fastener	1	
12	1331158	Door	1		36	MM431-4	Caster	4	
13	1331159	Locking Plate	1		37	MML-2	Leveling Pad	4	
14	1331171	Eye Brkt	3		38	MMSLD-ECH	Rubber Bumper	2	
15	1331172	Rod,3/4x20	1		39	NNSH5/8-11	Square Nut	8	
16	1331178	Pneumatic Panel	1	14	40	SSFC98024	Screw, Flat Allen	24	
17	1331185	Staple Gun Holder	1	15	41	SSSC01032	Screw, Socket Cap	1	
18	1331324	Stapler Plate	1		42	SSSC98032	Screw, Socket Cap	1	
19	1331504	Pedal Assy	1		43	TU21671LM	Stapler	1	
20	1331900	Control Box Assy	1	29	44	WWFS1/4	Flat Washer	1	
21	1331903	Track Assy, Long Side	1	30	45	WWFS10	Flat Washer	1	
22	1331908	Track Assy, Short Side	1	31	46	WWL1/4	Lock Washer	1	
23	13452000C	Table Lift Assy	1	33	47	WWL10	Lock Washer	1	
24	26254C	Air Reservoir	1			Rev. 1			

From the library of: Diamond Needle Corp





- NOTES:
- 1 TOP IS KEYED TO ASSEMBLE ONE WAY ONLY.
  - 2 USE TOOL IN SUB ASSY FOR TIGHTENING ITEMS 2 AND 3.

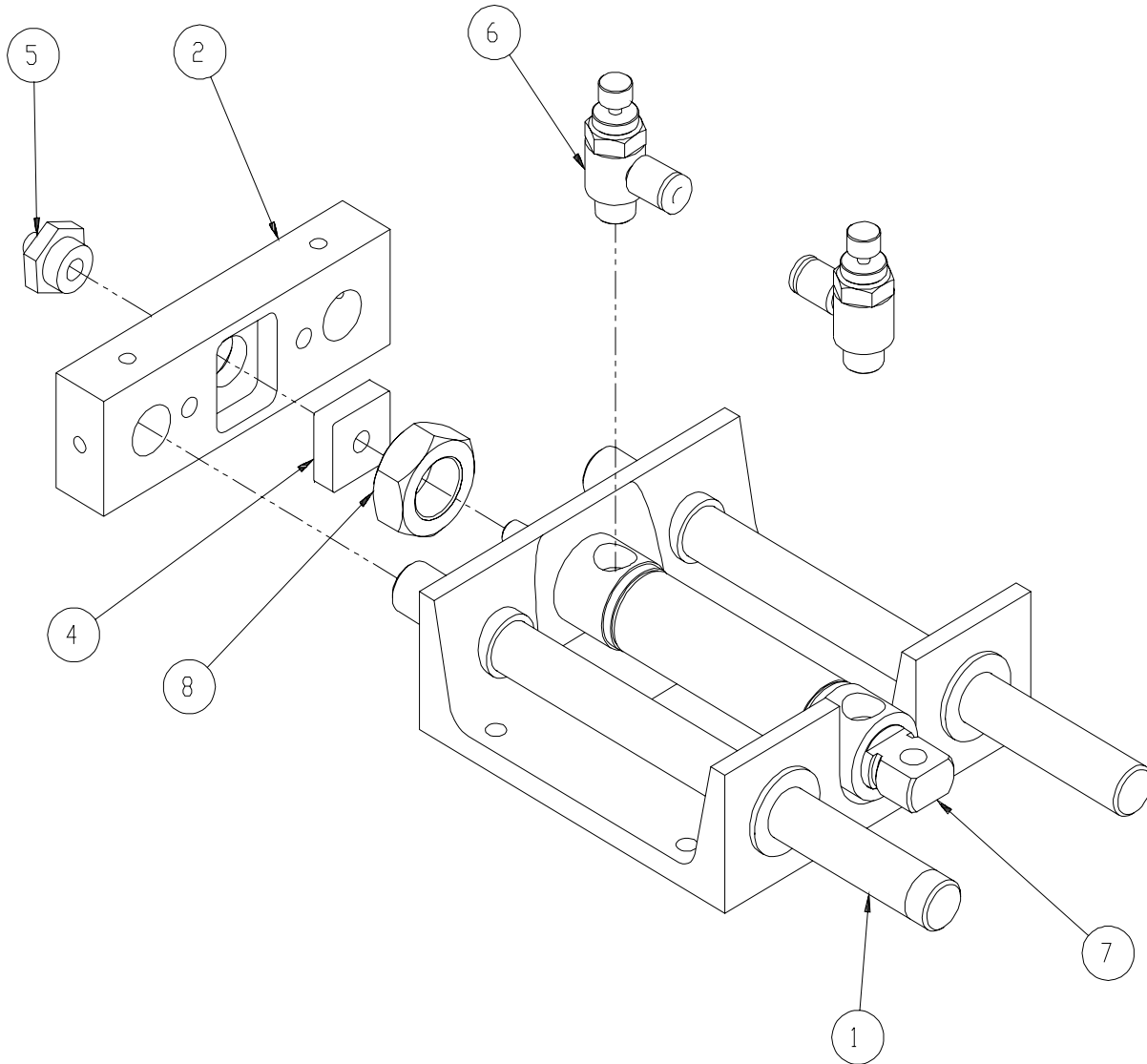


**1278-6010 Start/Stop Button Assembly**

#	Part #	Description	Qty	Pg	#	Part #	Description	Qty	Pg
1	EEPCB65GM	Enclosure Mod.	1		7	EE15Y	Legend Plate	1	
2	EEPMTS44	E-Stop Button	1		8	FF3210	Strain Relief	1	
3	EEPF3	Start Button	1		9	4080-4214	Cable	1	
4	EEA3L	Mounting Latch	2		10	4080-4215	Cable	1	
5	EE3X01	Contact Block N.C.	1		AAC Drawing Number 191058B Rev. 3				
6	EE3X10	Contact Block N.O.	1						

From the library of: Diamond Needle Corp



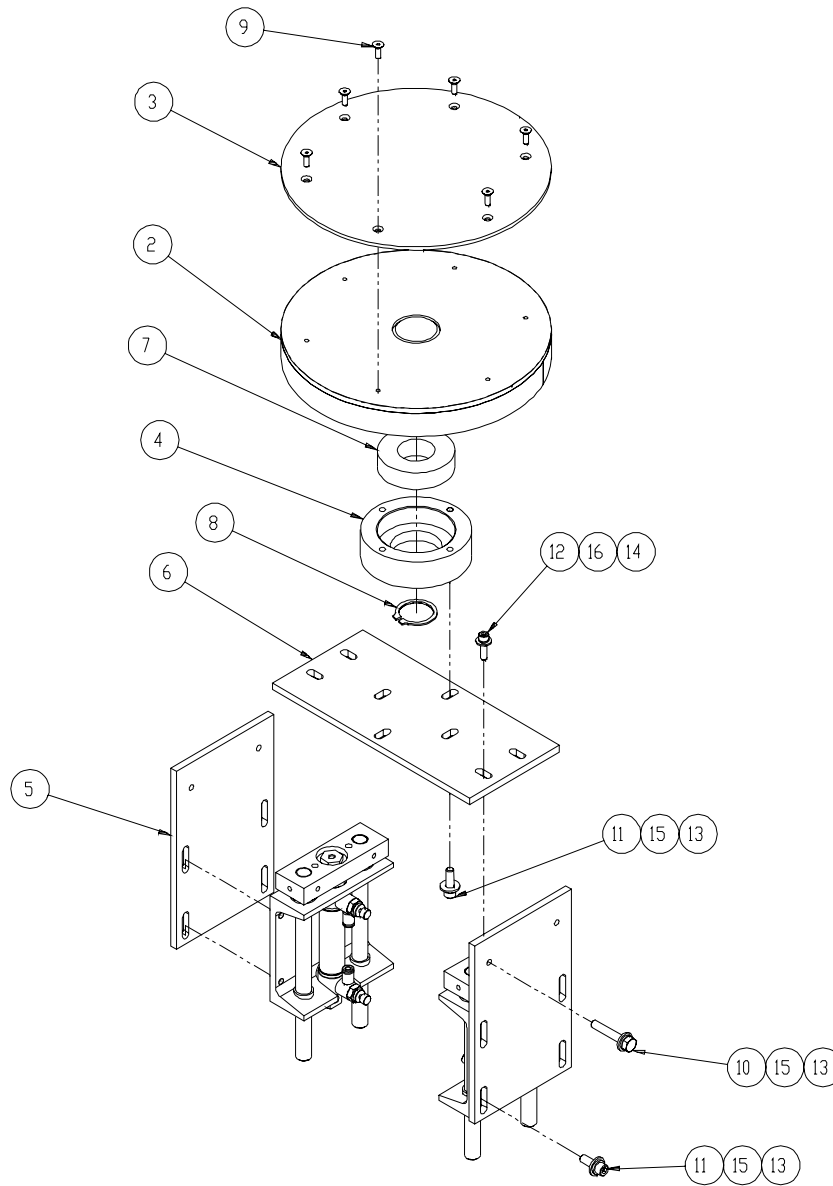


From the library of: Diamond Needle Corp

## 1331040 Rotate Lift Cylinder Assembly

#	Part #	Description	Qty	Pg	#	Part #	Description	Qty	Pg
1	97-6280	Slide Body	1		6	AAC7DP-1	Air Cylinder	1	
2	97-6282	Nut	1		7	NNJ5/8-18	Jam Nut	1	
3	97-6290	Lock Nut	1		8	AA198RA508	Flow Control	2	
4	32007224	Support Plate	1						
5	1331160	Rod, 1/2x7	2						
						Rev. 0			





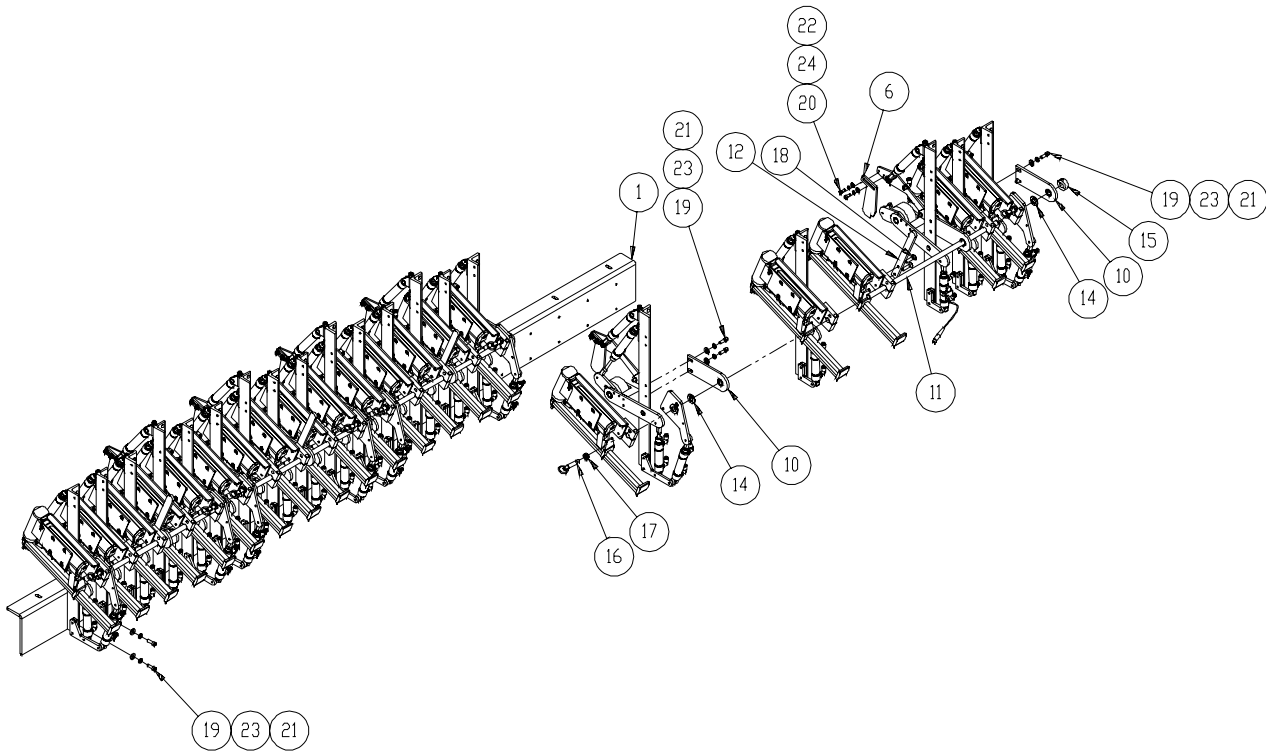
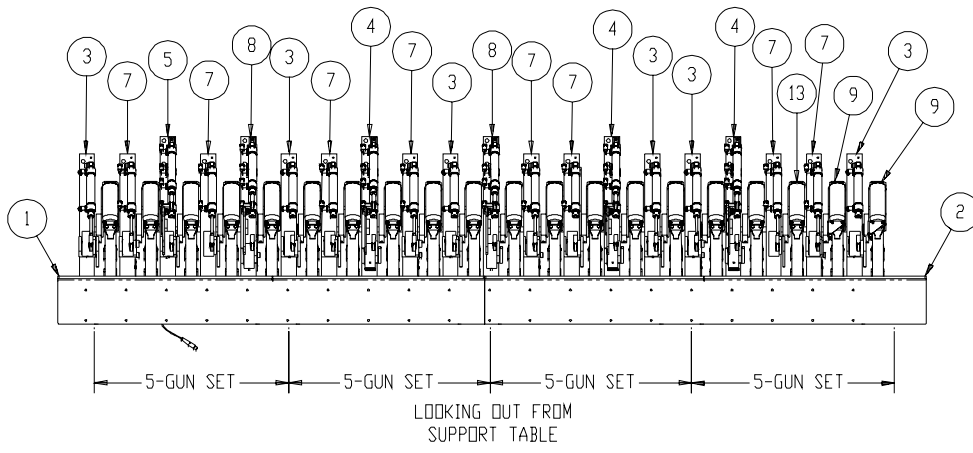
From the library of: Diamond Needle Corp

### 1331042 Pivot Lift Assembly

#	Part #	Description	Qty	Pg	#	Part #	Description	Qty	Pg
1	1331040	Rotate Lift Cylinder Assy	2	6	10	SSHC01096	Screw, Hex Cap	4	
2	1331041	Rotation Plate Assy	1		11	SSSC01048	Screw, Socket Cap	12	
3	1331068	Upper Plate	1		12	SSSC98048	Screw, Socket Cap	4	
4	1331071	Bearing Hub	1		13	WWFS1/4	Flat Washer	16	
5	1331111	Lift Mount	2		14	WWFS10	Flat Washer	4	
6	1331161	Plate Mount	1		15	WWL1/4	Lock Washer	16	
7	BB62062RS1	Ball Bearing	1		16	WWL10	Lock Washer	4	
8	MMSH-118	Snap Ring	1						
9	SSFC90032	Screw, Flat Allen	6						

Rev. 0





From the library of: Diamond Needle Corp

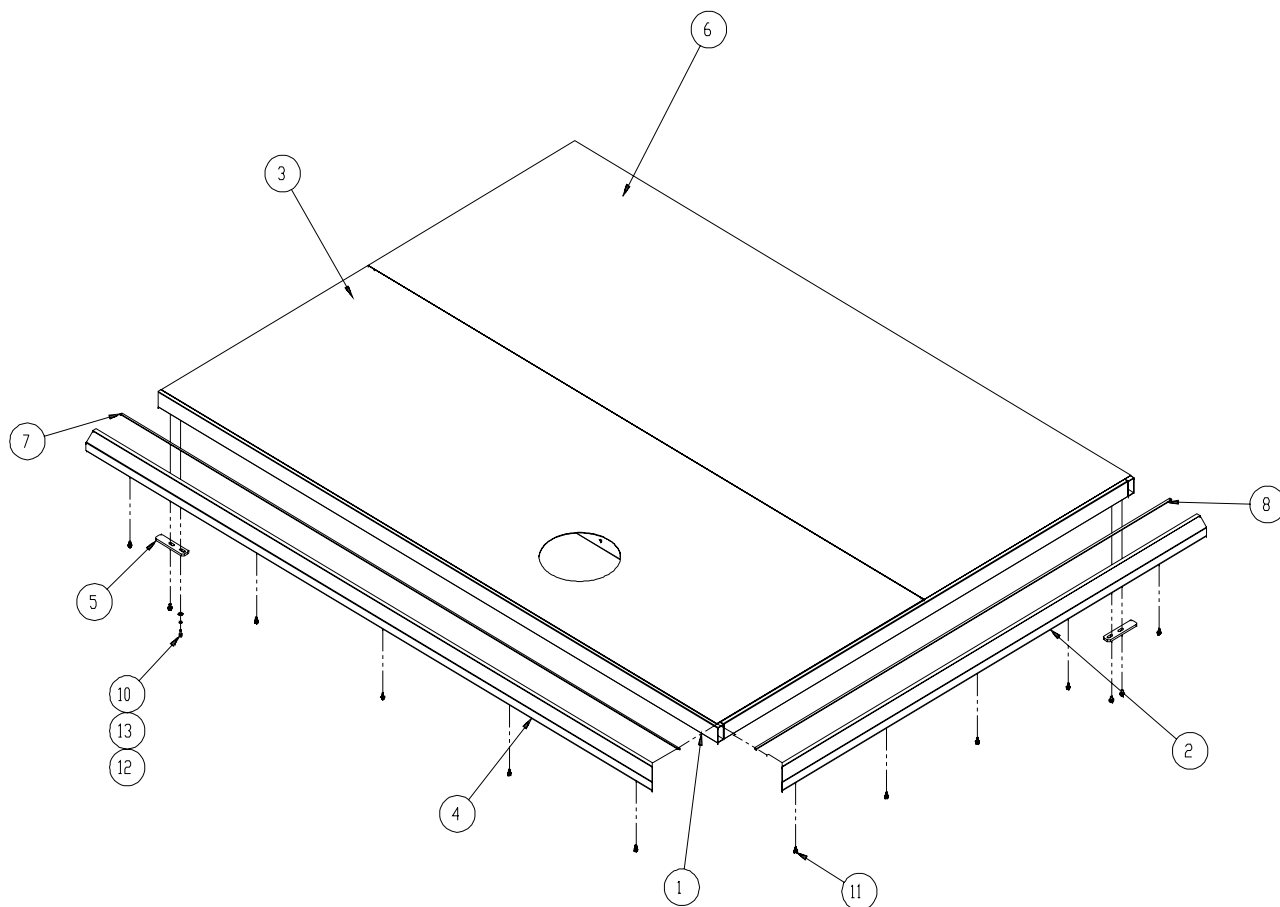


**1331130 Staple Gun Assembly, Long Side**

#	Part #	Description	Qty	Pg	#	Part #	Description	Qty	Pg
1	1331166	Inner Wheel Mount	1		14	BBTT1001	Thrust Washer	8	
2	1331169	Outer Wheel Mount	1		15	CCCL8F	Clamp Collar	4	
3	1331200	Cover Stretch Roller Assy	6	17	16	MM8487A31	Quick Release Pin	8	
4	1331250	Cover Stretch Roller Assy	3	19	17	NNJ3/8-16	Jam Nut	8	
5	1331260	Cover Stretch Assy	1	21	18	SSFC01072	Screw, Flat Allen	8	
6	1331266	Clamp Finger	6		19	SSSC01048	Screw, Socket Cap	64	
7	1331270	Cover Stretch Roller Assy	8	23	20	SSSC98032	Screw, Socket Cap	12	
8	1331280	Cover Stretch Assy	2	25	21	WWFS1/4	Flat Washer	64	
9	1331309	Staple Gun Assy	2	26	22	WWFS10	Flat Washer	12	
10	1331312	Support Plate	12		23	WWL1/4	Lock Washer	64	
11	1331319	Rod, 1/2x18	4		24	WWL10	Lock Washer	12	
12	1331328	Pivot Handle	4			Rev. 1			
13	1331349	Staple Gun Assy	18	27					

From the library of: Diamond Needle Corp





From the library of: Diamond Needle Corp



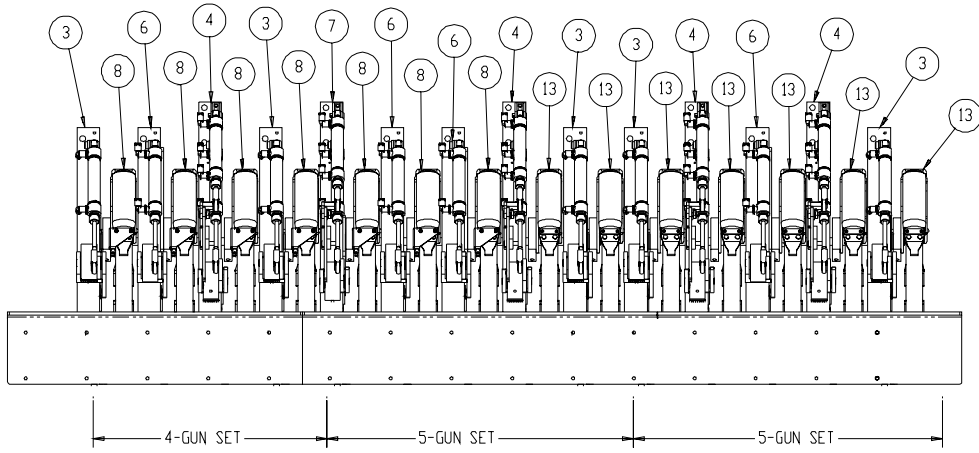


**1331140 Table Top Assembly**

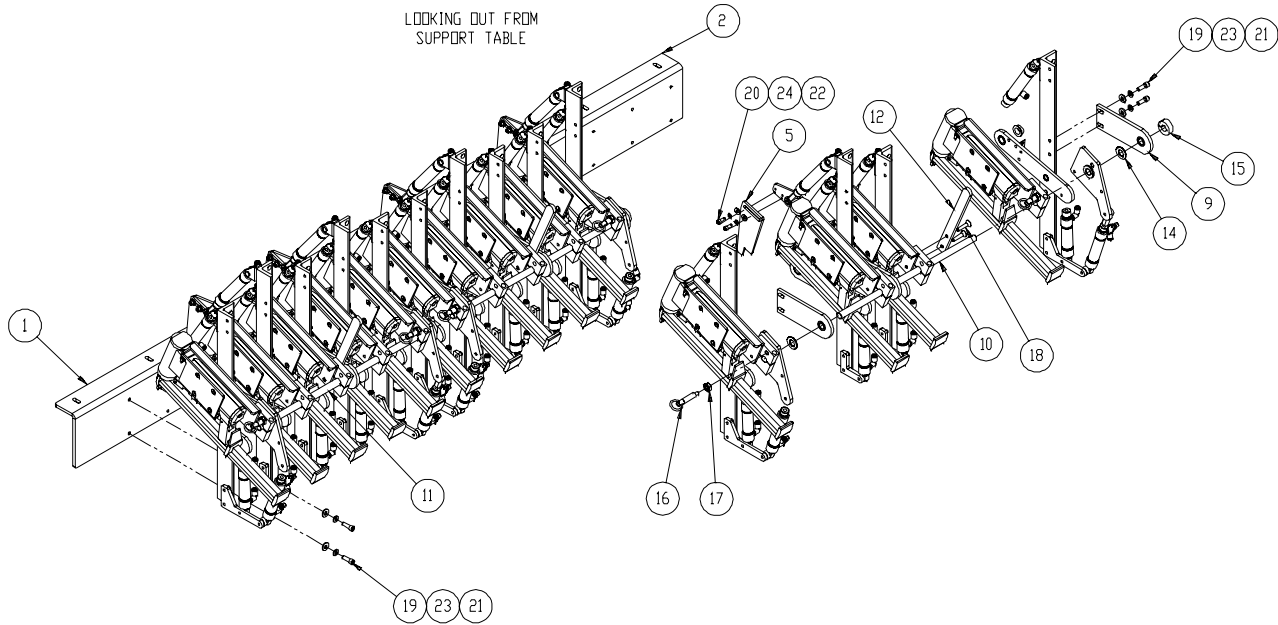
#	Part #	Description	Qty	Pg	#	Part #	Description	Qty	Pg
1	1331141	Table Top Frame	1		8	1331337	Table Shim	1	
2	1331146	Table Edge Cover	1		9	MM172-106	Foam Tape	800"	
3	1331147	Front Top Plate	1		10	SSSC98032	Screw, Socket Cap	4	
4	1331149	Table Edge Cover	1		11	SSZS93032	Screw, Sheet Metal	10	
5	1331151	Table Corner Bumper	2		12	WWFS10	Flat Washer	4	
6	1331163	Rear Top Plate	1		13	WWL10	Lock Washer	4	
7	1331336	Table Shim	1			Rev. 1			

From the library of: Diamond Needle Corp





LOOKING OUT FROM  
SUPPORT TABLE



From the library of: Diamond Needle Corp

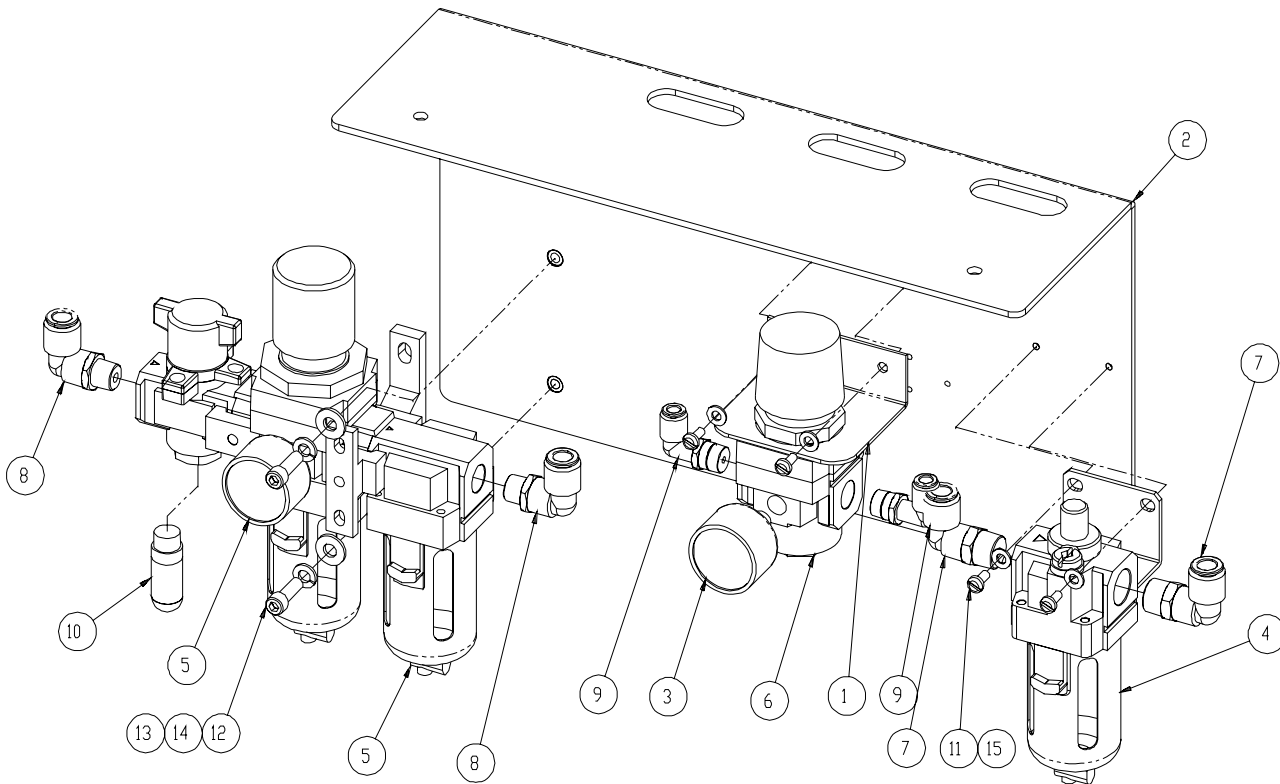


**1331150 Staple Gun Assembly, Short Side**

#	Part #	Description	Qty	Pg	#	Part #	Description	Qty	Pg
1	1331167	Inner Wheel Mount	1		14	BBTT1001	Thrust Washer	6	
2	1331168	Outer Wheel Mount	1		15	CCCL8F	Clamp Collar	3	
3	1331200	Cover Stretch Roller Assy	5	17	16	MM8487A31	Quick Release Pin	6	
4	1331250	Cover Stretch Assy	4	19	17	NNJ3/8-16	Jam Nut	6	
5	1331269	Clamp Finger	5		18	SSFC01072	Screw, Flat Allen	6	
6	1331270	Cover Stretch Roller Assy	4	23	19	SSSC01048	Screw, Socket Cap	4	
7	1331280	Cover Stretch Assy	1	25	20	SSSC98032	Screw, Socket Cap	10	
8	1331309	Staple Gun Assy	7	26	21	WWFS1/4	Flat Washer	4	
9	1331312	Support Plate	9		22	WWFS10	Flat Washer	10	
10	1331318	Rod, 1/2x14	1		23	WWL1/4	Lock Washer	4	
11	1331319	Rod, 1/2x18	2		24	WWL10	Lock Washer	10	
12	1331328	Pivot Handle	3			Rev. 1			
13	1331349	Staple Gun Assy	7	27					

From the library of: Diamond Needle Corp





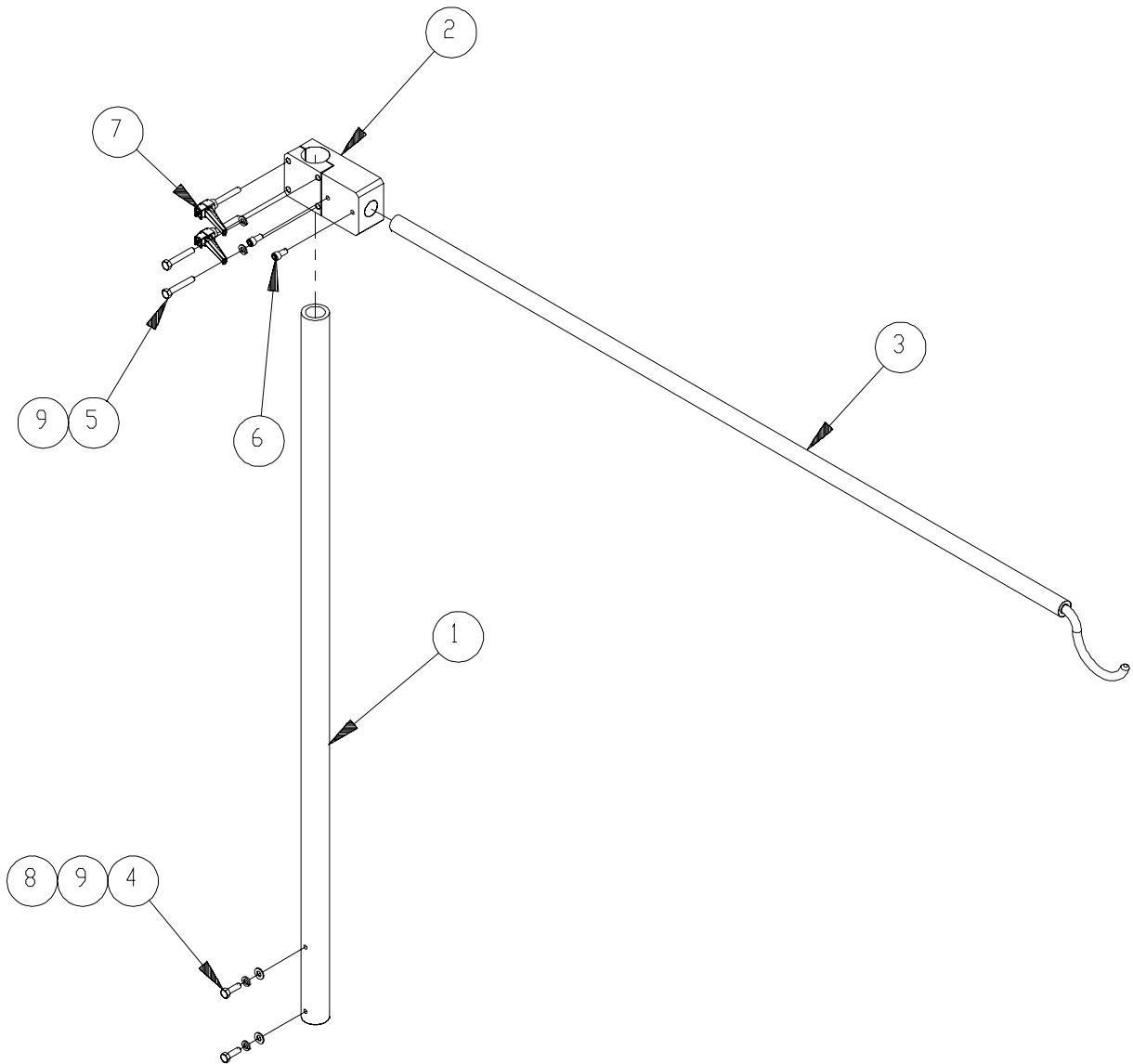
### 1331178 Pneumatic Panel Assembly

#	Part #	Description	Qty	Pg	#	Part #	Description	Qty	Pg
1	0411-071	Regulator Brkt	1		9	AAQME-4-4	Elbow Fitting	2	
2	1331175	Regulator Brkt	1		10	MMU002A	Muffler	1	
3	AA198-503	Air Gauge	1		11	SSPS90024	Screw, Pan Head	4	
4	AA198-509A	Air Lubricator	1		12	SSSC01048	Screw, Socket Cap	2	
5	AA198-5110	Filter/Regulator/Lockout	1		13	WWFS1/4	Flat Washer	2	
6	AA198-RP3	Air Regulator	1		14	WWL1/4	Lock Washer	2	
7	AAQME-3-3	Elbow Fitting	2		15	WWSI1/4	Star Washer	4	
8	AAQME-3-4	Elbow Fitting	2						

Rev. 1

From the library of: Diamond Needle Corp



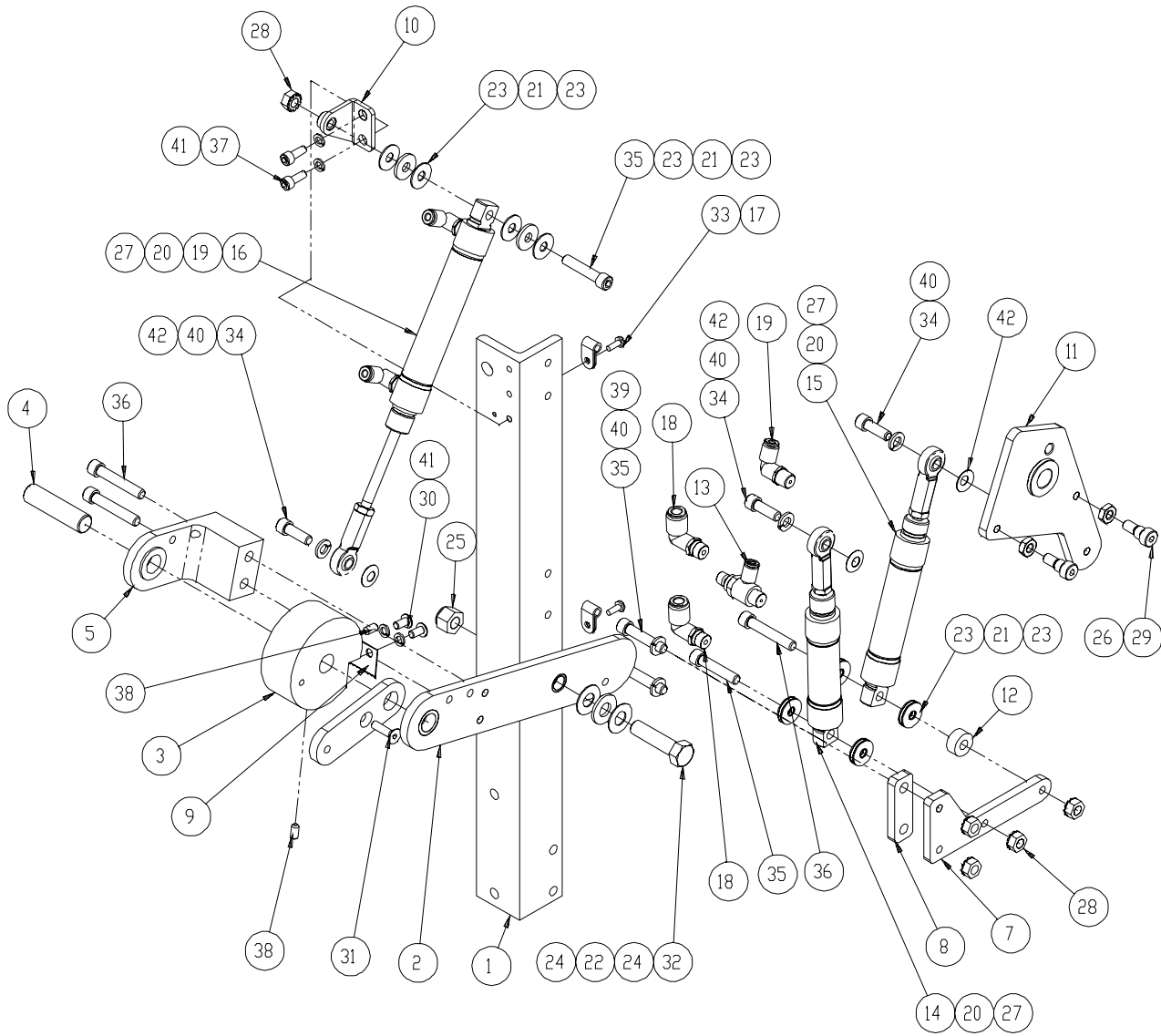


From the library of: Diamond Needle Corp

## 1331185 Overhead Staple Gun Holder Assembly

#	Part #	Description	Qty	Pg	#	Part #	Description	Qty	Pg
1	1331186	Tube	1		6	SSSC10040	Screw, Socket Cap	2	
2	1331188	Clamp Block	1		7	TTH32429	Threaded Handle	2	
3	1331192	Arm Weldment	1		8	WWFS5/16	Flat Washer	2	
4	SSHC10064	Screw, Hex Cap	2		9	WWL5/16	Lock Washer	4	
5	SSHC10128	Screw, Hex Cap	2			Rev. 0			





From the library of: Diamond Needle Corp

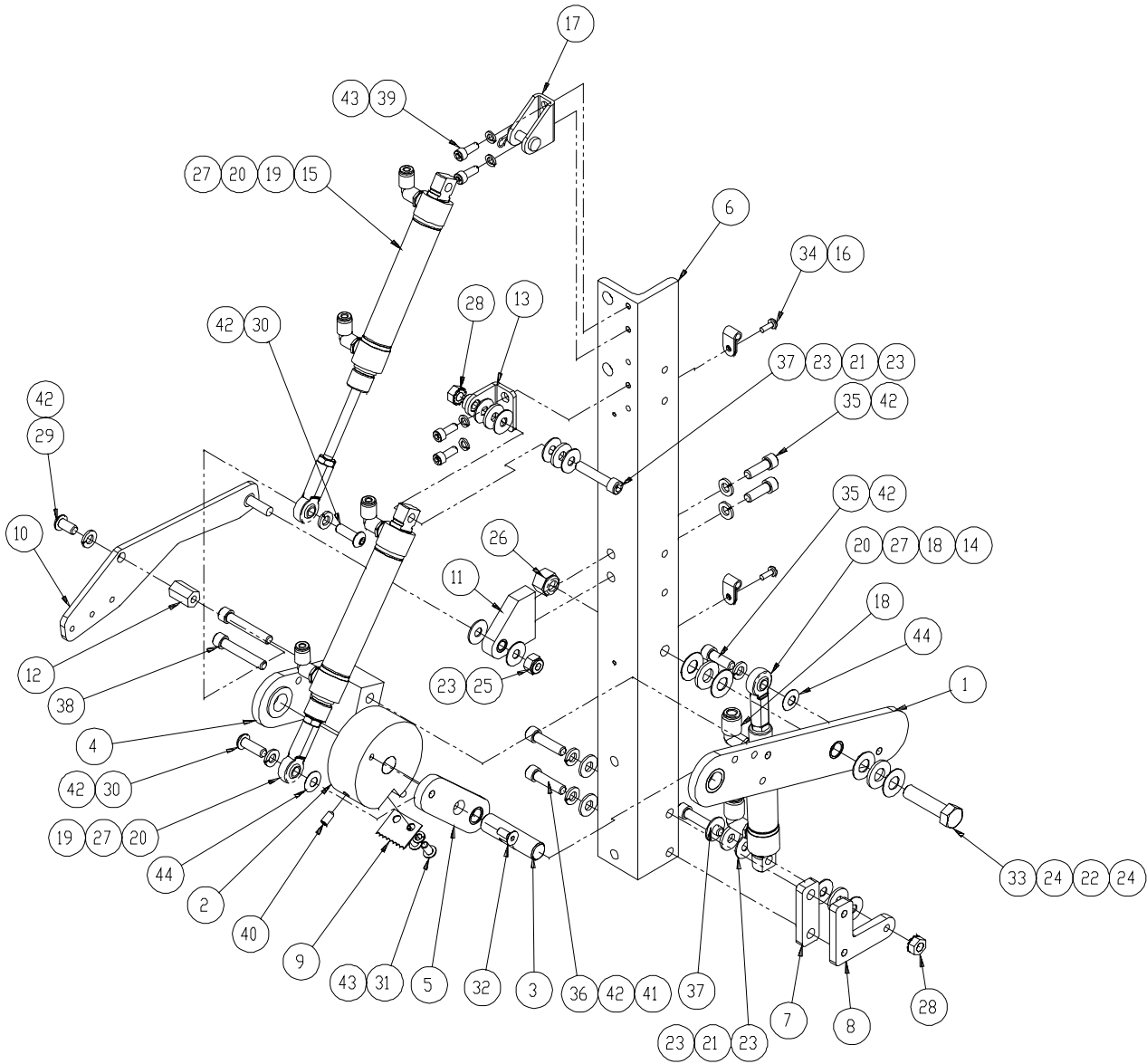


**1331200 Cover Stretch Roller Assembly**

#	Part #	Description	Qty	Pg	#	Part #	Description	Qty	Pg
1	1331201	Tension Roller Mnt	1		23	BBTRA411	Thrust Washer	12	
2	1331202	Tension Wheel Arm	1		24	BBTRA613	Thrust Washer	4	
3	1331203	Tension Wheel	1		25	NNE3/8-16	Elastic Lock Nut	1	
4	1331204	Tension Wheel Shaft	1		26	NNJ1/4-20	Jam Nut	2	
5	1331205	Tension Wheel Yoke	1		27	NNJ1/4-28	Jam Nut	3	
6	1331206	Pivot Arm	1		28	NNK1/4-20	Kej Nut	5	
7	1331210	Cylinder Brkt	1		29	SSAS020016	Screw, Allen Shoulder	2	
8	1331212	Spacer	1		30	SSBC98024	Screw, Button Cap	2	
9	1331216	Tension Blade	1		31	SSFC95048	Screw, Flat Allen	1	
10	1331268	Cylinder Brkt	1		32	SSHC25096	Screw, Hex Cap	1	
11	1331311	Pivot Arm	1		33	SSPS80024	Screw, Pan Head	2	
12	1331313	Spacer	1		34	SSSC01048	Screw, Socket Cap	3	
13	AA198RA508	Flow Control	1		35	SSSC01080	Screw, Socket Cap	4	
14	AAC7DP-5	Air Cylinder	1		36	SSSC01096	Screw, Socket Cap	3	
15	AAC7DP-1	Air Cylinder	1		37	SSSC98032	Screw, Socket Cap	2	
16	AAC7DP-2	Air Cylinder	1		38	SSSS98024	Screw, Socket Set	2	
17	AAF3/16	Clamp	2		39	WWFS1/4	Flat Washer	5	
18	AAQME-4-8	Elbow Fitting	2		40	WWL1/4	Lock Washer	5	
19	AAQME-5-8	Elbow Fitting	3		41	WWL10	Lock Washer	4	
20	BBAW-4	Rod End	3		42	WWS307-1	Spring Washer	3	
21	BBNTA411	Thrust Bearing	6			Rev. 3			
22	BBNTA613	Thrust Bearing	2						

From the library of: Diamond Needle Corp





From the library of: Diamond Needle Corp



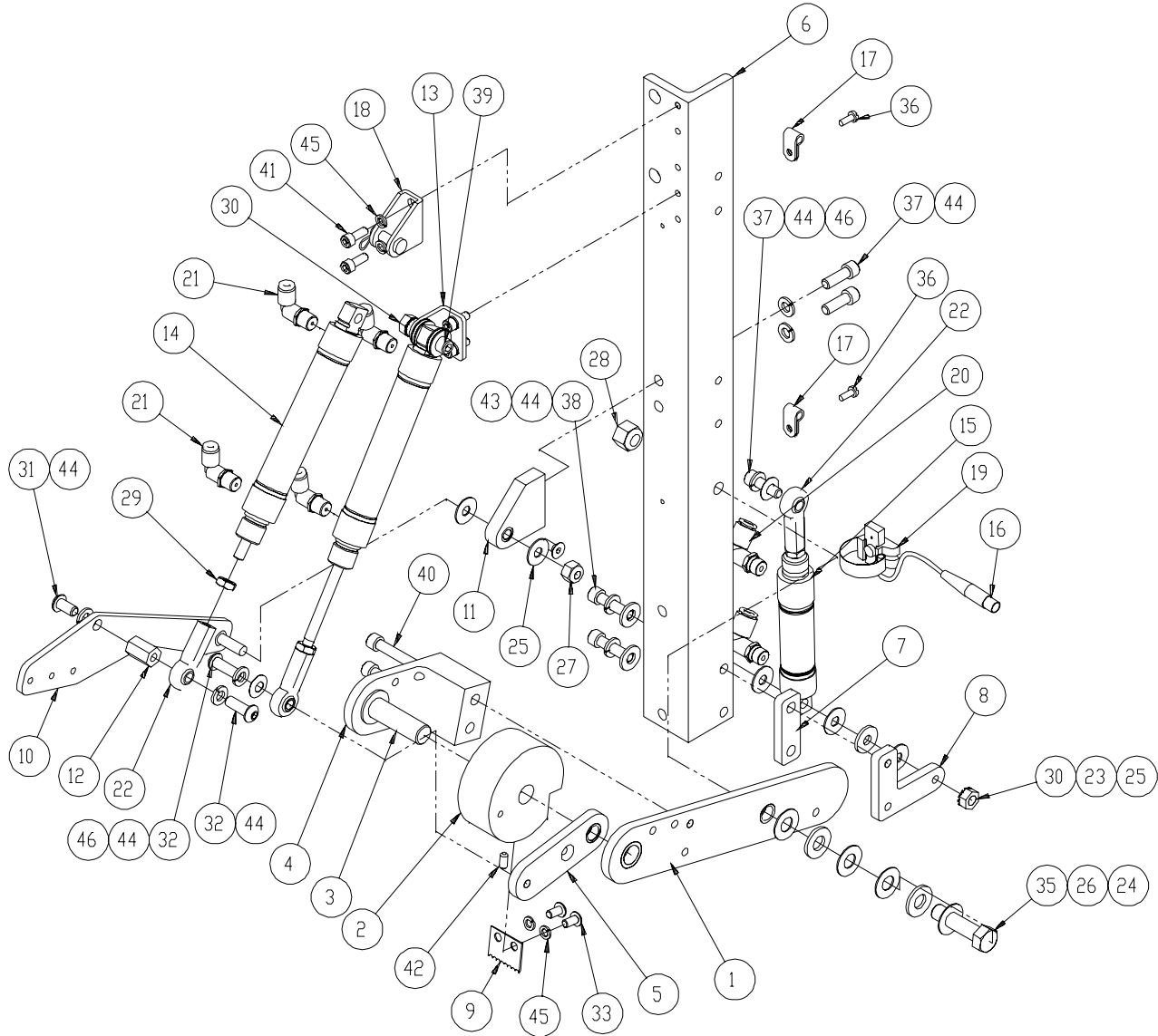


**1331250 Cover Stretch Assembly**

#	Part #	Description	Qty	Pg	#	Part #	Description	Qty	Pg
1	1331202	Tension Wheel Arm	1		24	BBTRA613	Thrust Washer	4	
2	1331203	Tension Wheel	1		25	NNE1/4-20	Elastic Lock Nut	1	
3	1331204	Tension Wheel Shaft	1		26	NNE3/8-16	Elastic Lock Nut	1	
4	1331205	Tension Wheel Yoke	1		27	NNJ1/4-28	Jam Nut	3	
5	1331206	Pivot Arm Assy	1		28	NNK1/4-20	Kep Nut	2	
6	1331207	Tension Roller Mnt	1		29	SSBC01032	Screw, Button Cap	1	
7	1331212	Spacer	1		30	SSBC01048	Screw, Button Cap	2	
8	1331213	Cylinder Brkt	1		31	SSBC98024	Screw, Button Cap	2	
9	1331216	Tension Blade	1		32	SSFC98032	Screw, Flat Allen	1	
10	1331262	Clamp Finger	1		33	SSHC25096	Screw, Hex Cap	1	
11	1331263	Slide Mnt Bar	1		34	SSPS80024	Screw, Pan Head	2	
12	1331264	Standoff	1		35	SSSC01048	Screw, Socket Cap	3	
13	1331268	Cylinder Brkt	1		36	SSSC01056	Screw, Socket Cap	2	
14	AAC7DP-.5	Air Cylinder	1		37	SSSC01080	Screw, Socket Cap	2	
15	AAC7DP-2	Air Cylinder	2		38	SSSC01096	Screw, Socket Cap	2	
16	AAF3/16	Clamp	2		39	SSSC98032	Screw, Socket Cap	4	
17	AAFBP-11C	Pivot Brkt	1		40	SSSS98024	Screw, Socket Set	2	
18	AAQME-4-8	Elbow Fitting	2		41	WWFS1/4	Flat Washer	2	
19	AAQME-5-8	Elbow Fitting	4		42	WWL1/4	Lock Washer	8	
20	BBAW-4	Rod End	3		43	WWL10	Lock Washer	6	
21	BBNTA411	Thrust Bearing	4		44	WWS307-1	Spring Washer	2	
22	BBNTA613	Thrust Bearing	2						
23	BBTRA411	Thrust Washer	10						
						Rev. 1			

From the library of: Diamond Needle Corp





From the library of: Diamond Needle Corp

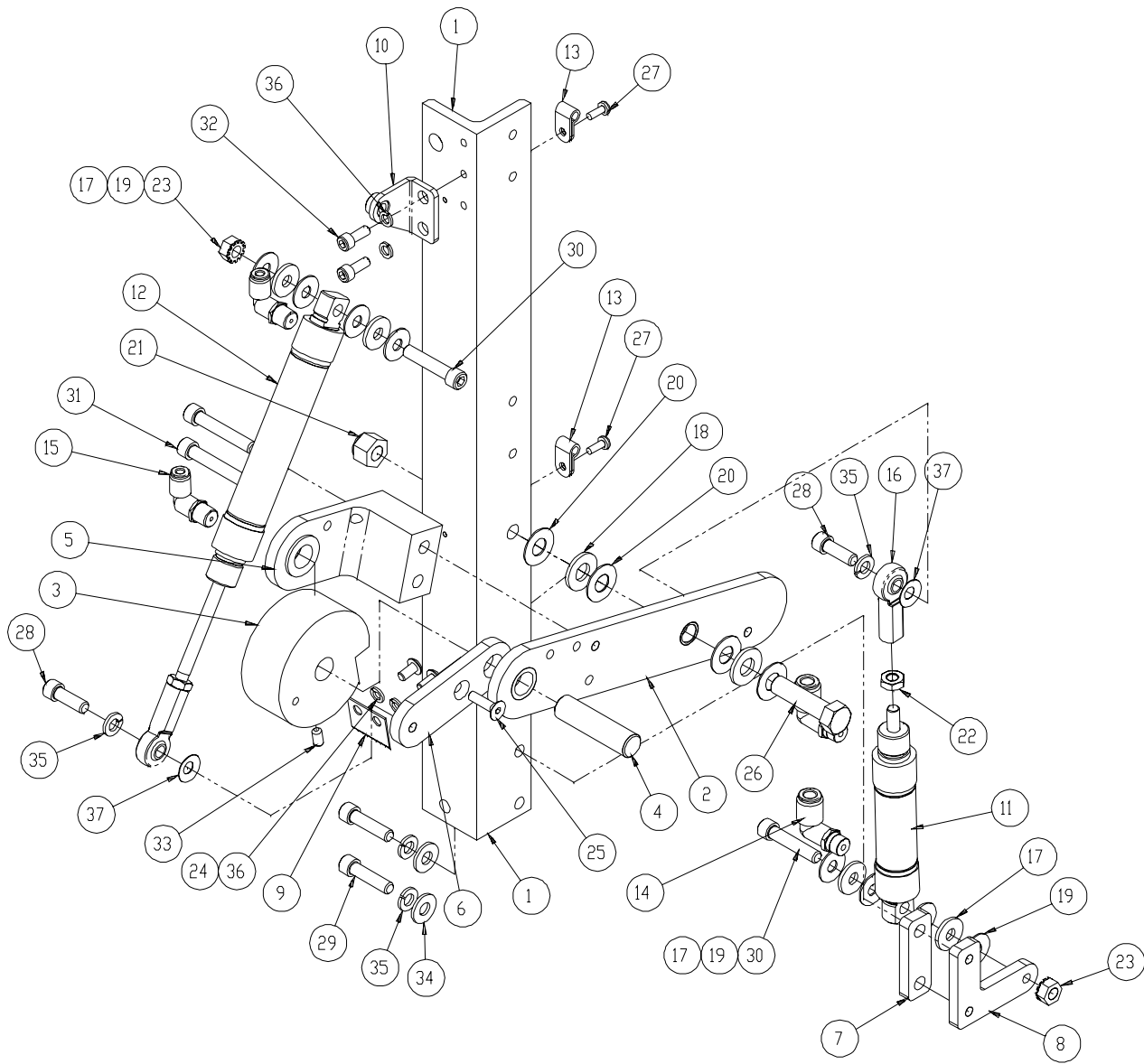


**1331260 Cover Stretch Assembly w/ Switch**

#	Part #	Description	Qty	Pg	#	Part #	Description	Qty	Pg
1	1331202	Tension Wheel Arm	1		25	BBTRA411	Thrust Washer	10	
2	1331203	Tension Wheel	1		26	BBTRA613	Thrust Washer	4	
3	1331204	Tension Wheel Shaft	1		27	NNE1/4-20	Lock Nut	1	
4	1331205	Tension Wheel Yoke	1		28	NNE3/8-16	Lock Nut	1	
5	1331206	Pivot Arm Assy	1		29	NNJ1/4-28	Jam Nut	3	
6	1331207	Tension Roller Mnt	1		30	NNK1/4-20	Kej Nut	2	
7	1331212	Spacer	1		31	SSBC01032	Screw, Button Cap	1	
8	1331213	Cylinder Brkt	1		32	SSBC01048	Screw, Button Cap	2	
9	1331216	Tension Blade	1		33	SSBC98024	Screw, Button Cap	2	
10	1331262	Clamp Finger	1		34	SSFC98032	Screw, Flat Allen	1	
11	1331263	Slide Mnt Bar	1		35	SSHC25096	Screw, Hex Cap	1	
12	1331264	Standoff	1		36	SSPS80024	Screw, Pan Head	2	
13	1331268	Cylinder Brkt	1		37	SSSC01048	Screw, Socket Cap	3	
14	AAC7DP-2	Air Cylinder	2		38	SSSC01056	Screw, Socket Cap	2	
15	AACM040.5-DXP	Air Cylinder	1		39	SSSC01080	Screw, Socket Cap	2	
16	AAEHSKQ	Switch	1		40	SSSC01096	Screw, Socket Cap	2	
17	AAF3/16	Clamp	2		41	SSSC98032	Screw, Socket Cap	4	
18	AAFBP-11C	Pivot Brkt	1		42	SSSS98024	Screw, Socket Set	2	
19	AAFD35456-6	Switch Band	1		43	WWFS1/4	Flat Washer	2	
20	AAQME-4-8	Elbow Fitting	2		44	WWL1/4	Lock Washer	8	
21	AAQME-5-8	Elbow Fitting	4		45	WWL10	Lock Washer	6	
22	BBAW-4	Rod End	3		46	WWS307-1	Spring Washer	2	
23	BBNTA411	Thrust Bearing	4			Rev. 1			
24	BBNTA613	Thrust Bearing	2						

From the library of: Diamond Needle Corp





From the library of: Diamond Needle Corp

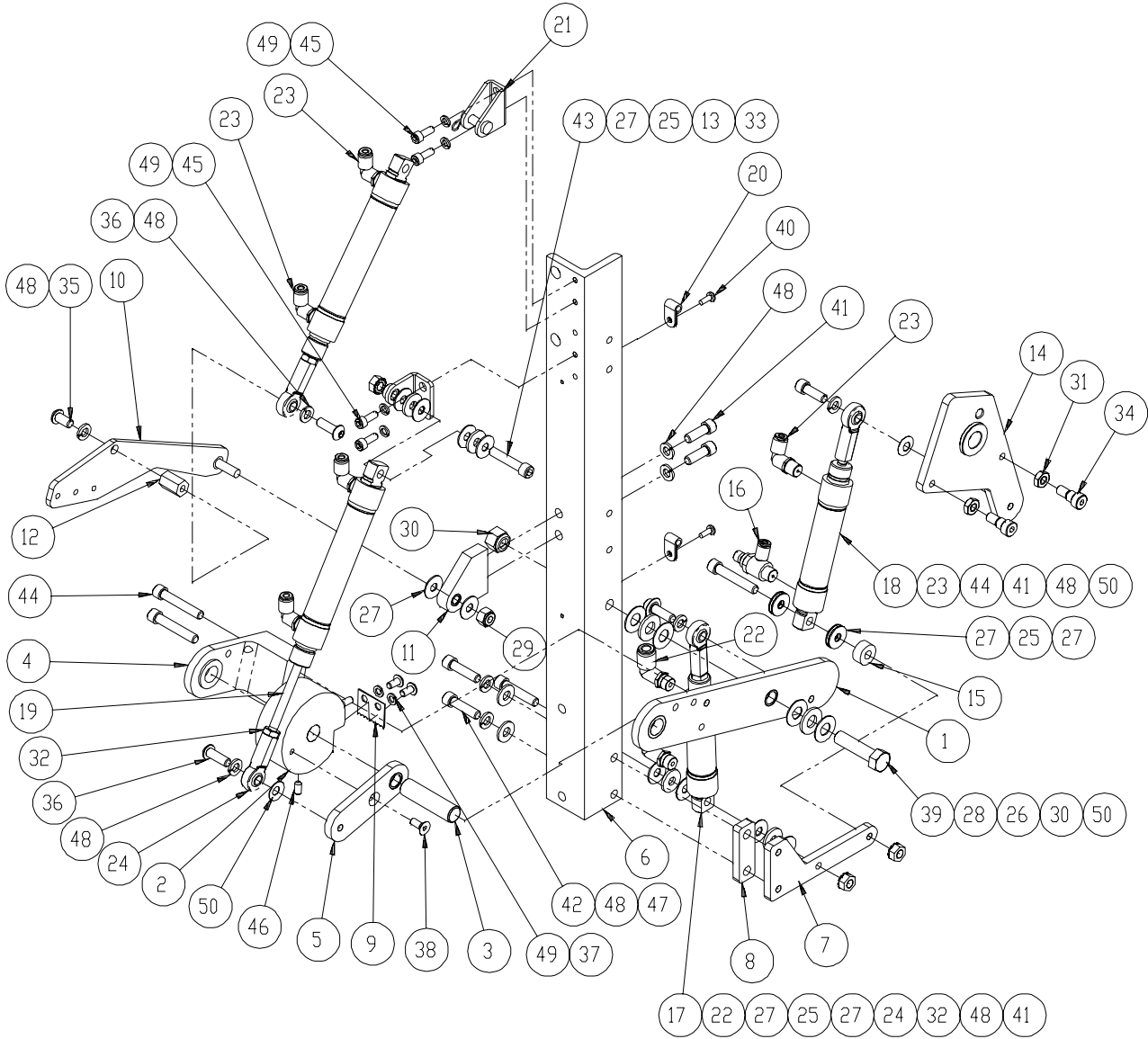


**1331270 Cover Stretch Roller Assembly**

#	Part #	Description	Qty	Pg	#	Part #	Description	Qty	Pg
1	1331201	Tension Roller Mnt	1		20	BBTRA613	Thrust Washer	4	
2	1331202	Tension Wheel Arm	1		21	NNE3/8-16	Lock Nut	1	
3	1331203	Tension Wheel	1		22	NNJ1/4-28	Jam Nut	2	
4	1331204	Tension Wheel Shaft	1		23	NNK1/4-20	Kej Nut	2	
5	1331205	Tension Wheel Yoke	1		24	SSBC98024	Screw, Button Cap	2	
6	1331206	Pivot Arm	1		25	SSFC95048	Screw, Flat Allen	1	
7	1331212	Spacer	1		26	SSHC25096	Screw, Hex Cap	1	
8	1331213	Cylinder Brkt	1		27	SSPS80024	Screw, Pan Head	2	
9	1331216	Tension Blade	1		28	SSSC01048	Screw, Socket Cap	2	
10	1331268	Cylinder Brkt	1		29	SSSC01064	Screw, Socket Cap	2	
11	AAC7DP-.5	Air Cylinder	1		30	SSSC01080	Screw, Socket Cap	2	
12	AAC7DP-2	Air Cylinder	1		31	SSSC01096	Screw, Socket Cap	2	
13	AAF3/16	Clamp	2		32	SSSC98032	Screw, Socket Cap	2	
14	AAQME-4-8	Elbow Fitting	2		33	SSSS98024	Screw, Socket Set	2	
15	AAQME-5-8	Elbow Fitting	2		34	WWFS1/4	Flat Washer	2	
16	BBAW-4	Rod End	2		35	WWL1/4	Lock Washer	4	
17	BBNTA411	Thrust Bearing	4		36	WWL10	Lock Washer	4	
18	BBNTA613	Thrust Bearing	2		37	WWS307-1	Spring Washer	2	
19	BBTRA411	Thrust Washer	8			Rev. 2			

From the library of: Diamond Needle Corp





From the library of: Diamond Needle Corp

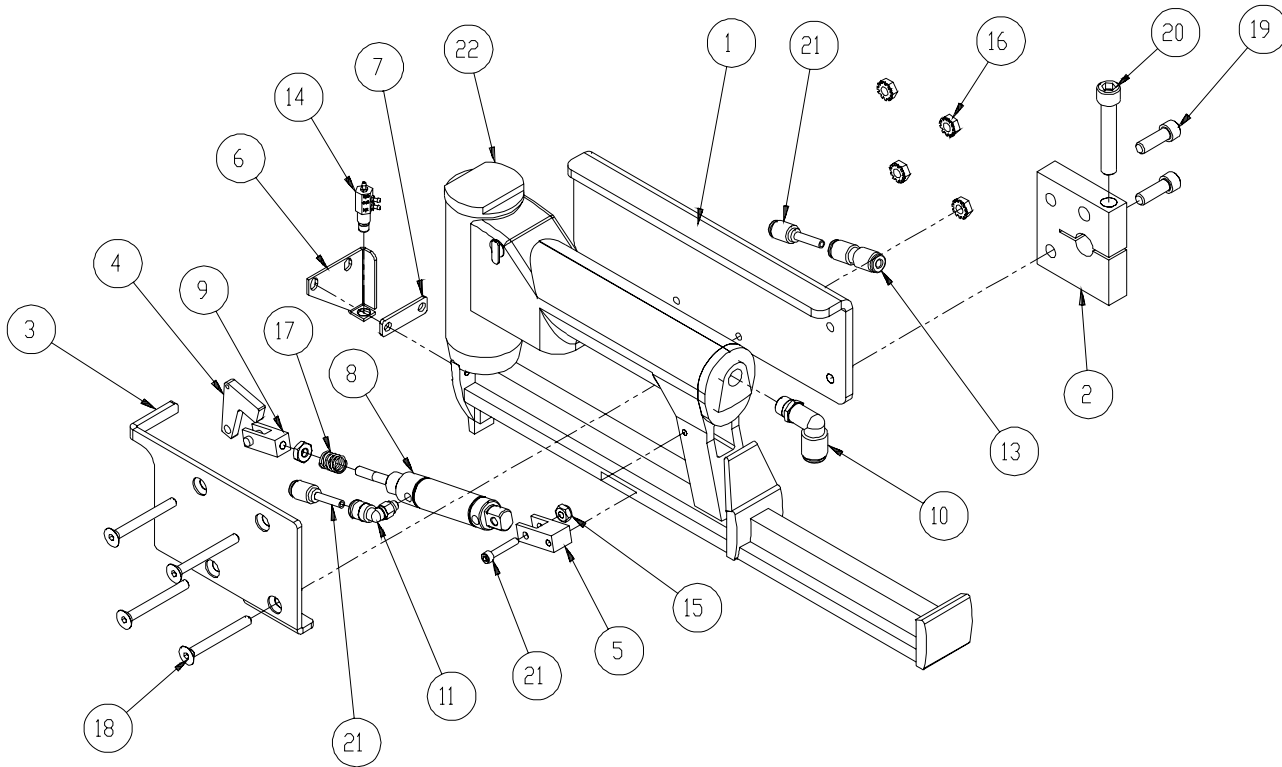


**1331280 Cover Stretch Assembly w/ Hook**

#	Part #	Description	Qty	Pg	#	Part #	Description	Qty	Pg
1	1331202	Tension Wheel Arm	1		27	BBTRA411	Thrust Washer	14	
2	1331203	Tension Wheel	1		28	BBTRA613	Thrust Washer	4	
3	1331204	Tension Wheel Shaft	1		29	NNE1/4-20	Lock Nut	1	
4	1331205	Tension Wheel Yoke	1		30	NNE3/8-16	Lock Nut	1	
5	1331206	Pivot Arm Assy	1		31	NNJ1/4-20	Jam Nut	2	
6	1331207	Tension Roller Mnt	1		32	NNJ1/4-28	Jam Nut	3	
7	1331210	Cylinder Brkt	1		33	NNK1/4-20	Keq Nut	3	
8	1331212	Spacer	1		34	SSAS020016	Screw, Allen Shoulder	2	
9	1331216	Tension Blade	1		35	SSBC01032	Screw, Button Cap	1	
10	1331262	Clamp Finger	1		36	SSBC01048	Screw, Button Cap	2	
11	1331263	Slide Mnt Bar	1		37	SSBC98024	Screw, Button Cap	2	
12	1331264	Standoff	1		38	SSFC98032	Screw, Flat Allen	1	
13	1331268	Cylinder Brkt	1		39	SSHC25096	Screw, Hex Cap	1	
14	1331311	Staple Pivot Arm	1		40	SSPS80024	Screw, Pan Head	2	
15	1331313	Spacer	1		41	SSSC01048	Screw, Socket Cap	4	
16	AA198RA508	Flow Control	1		42	SSSC01064	Screw, Socket Cap	2	
17	AAC7DP-.5	Air Cylinder	1		43	SSSC01080	Screw, Socket Cap	2	
18	AAC7DP-1	Air Cylinder	1		44	SSSC01096	Screw, Socket Cap	3	
19	AAC7DP-2	Air Cylinder	2		45	SSSC98032	Screw, Socket Cap	4	
20	AAF3/16	Clamp	2		46	SSSS98024	Screw, Socket Set	2	
21	AAFBP-11C	Pivot Brkt	1		47	WWFS1/4	Flat Washer	2	
22	AAQME-4-8	Elbow Fitting	2		48	WWL1/4	Lock Washer	9	
23	AAQME-5-8	Elbow Fitting	5		49	WWL10	Lock Washer	6	
24	BBAW-4	Rod End	4		50	WWS307-1	Spring Washer	3	
25	BBNTA411	Thrust Bearing	4			Rev. 2			
26	BBNTA613	Thrust Bearing	2						

From the library of: Diamond Needle Corp





### 1331309 Staple Gun Assembly

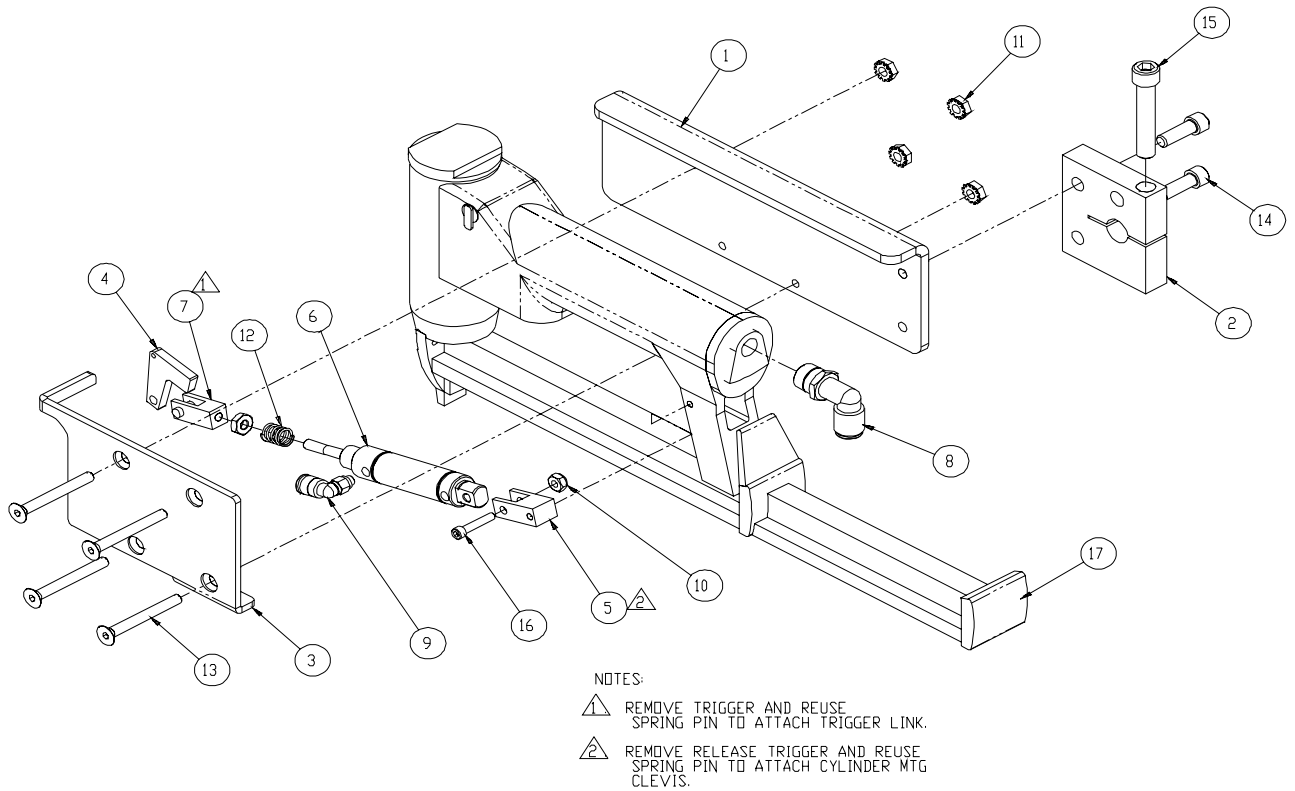
#	Part #	Description	Qty	Pg	#	Part #	Description	Qty	Pg
1	1331308	Plate Mnt	1		13	AAQSU-5-5	Union Fitting	1	
2	1331310	Clamp	1		14	AAVSMVA-3	Valve	1	
3	1331338	Pressure Plate	1		15	NNE6-32	Elastic Lock Nut	1	
4	1331343	Trigger Link	1		16	NNK10-32	Jam Nut	4	
5	1331344	Cylinder Clevis	1		17	RRLC038E1	Spring	1	
6	1331345	Valve Mnt Brkt	1		18	SSFC98112	Screw, Flat Allen	4	
7	1331346	Washer Plate	1		19	SSSC01048	Screw, Socket Cap	2	
8	AAC8DP-.5	Air Cylinder	1		20	SSSC10112	Screw, Socket Cap	1	
9	AAFCT-8	Cylinder Clevis	1		21	SSSC80048	Screw, Socket Cap	1	
10	AAQME-4-8	Elbow Fitting	1		22	TU21671LM	Staple Gun	1	
11	AAQME-5-10	Elbow Fitting	1						
12	AAQPR-8-5	Reducer Fitting	2						

Rev. 3

From the library of: Diamond Needle Corp





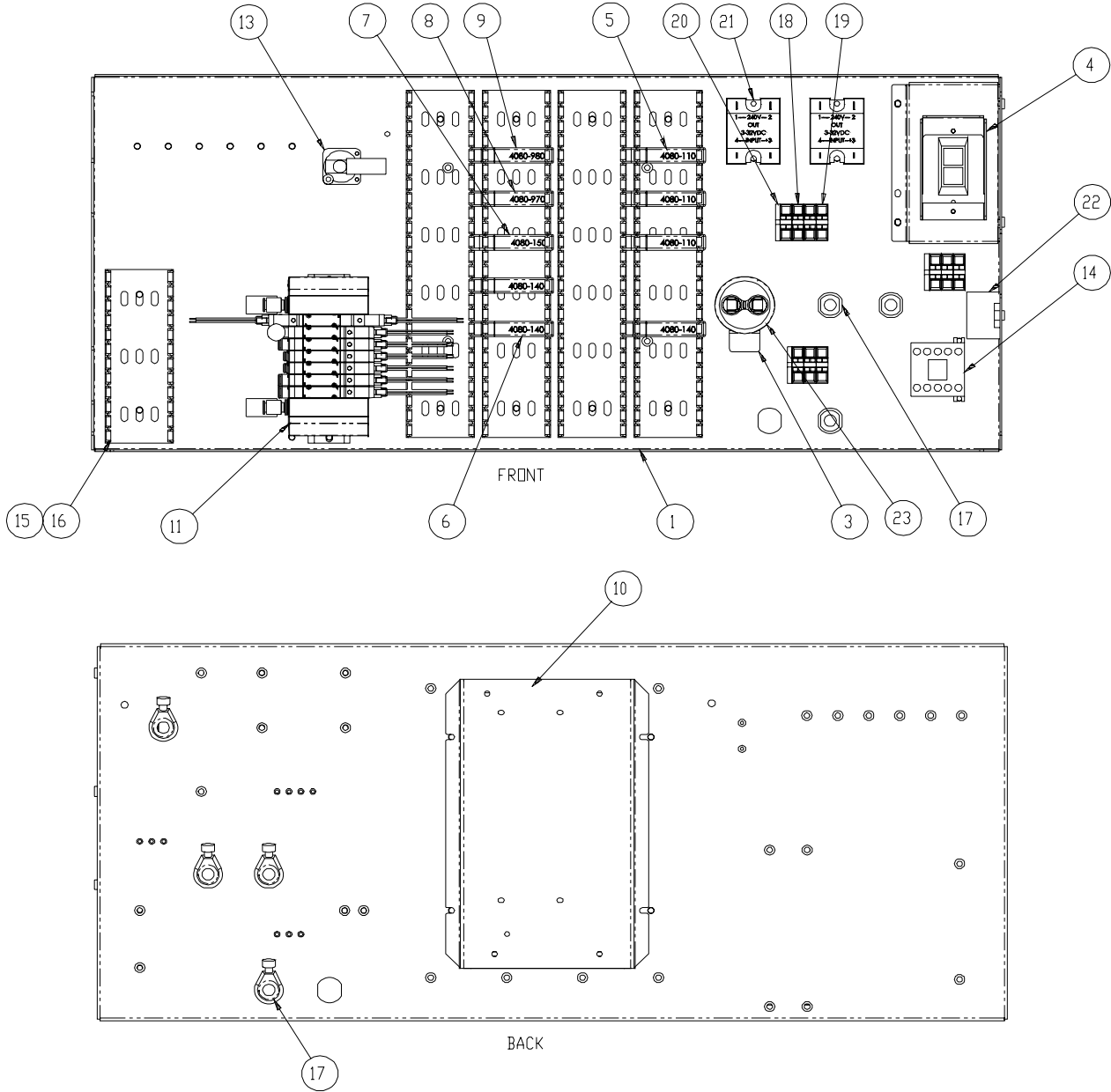


## 1331349 Staple Gun Assembly

#	Part #	Description	Qty	Pg	#	Part #	Description	Qty	Pg
1	1331308	Mount Plate	1		10	NNE6-32	Elastic Lock Nut	1	
2	1331310	Pivot Clamp	1		11	NNK10-32	Kep Nut	4	
3	1331338	Pressure Plate	1		12	RRLC038E1	Spring	1	
4	1331343	Trigger Link	1		13	SSFC98112	Screw, Flat Allen	4	
5	1331344	Cylinder Clevis	1		14	SSSC01048	Screw, Socket Cap	2	
6	AAC8DP-5	Air Cylinder	1		15	SSSC10112	Screw, Socket Cap	1	
7	AAFCT-8	Clevis	1		16	SSSC80048	Screw, Socket Cap	1	
8	AAQME-4-4	Elbow Fitting	1		17	TU21671LM	Stapler	1	
9	AAQME-5-10	Elbow Fitting	1						
						Rev. 2			

From the library of: Diamond Needle Corp





From the library of: Diamond Needle Corp

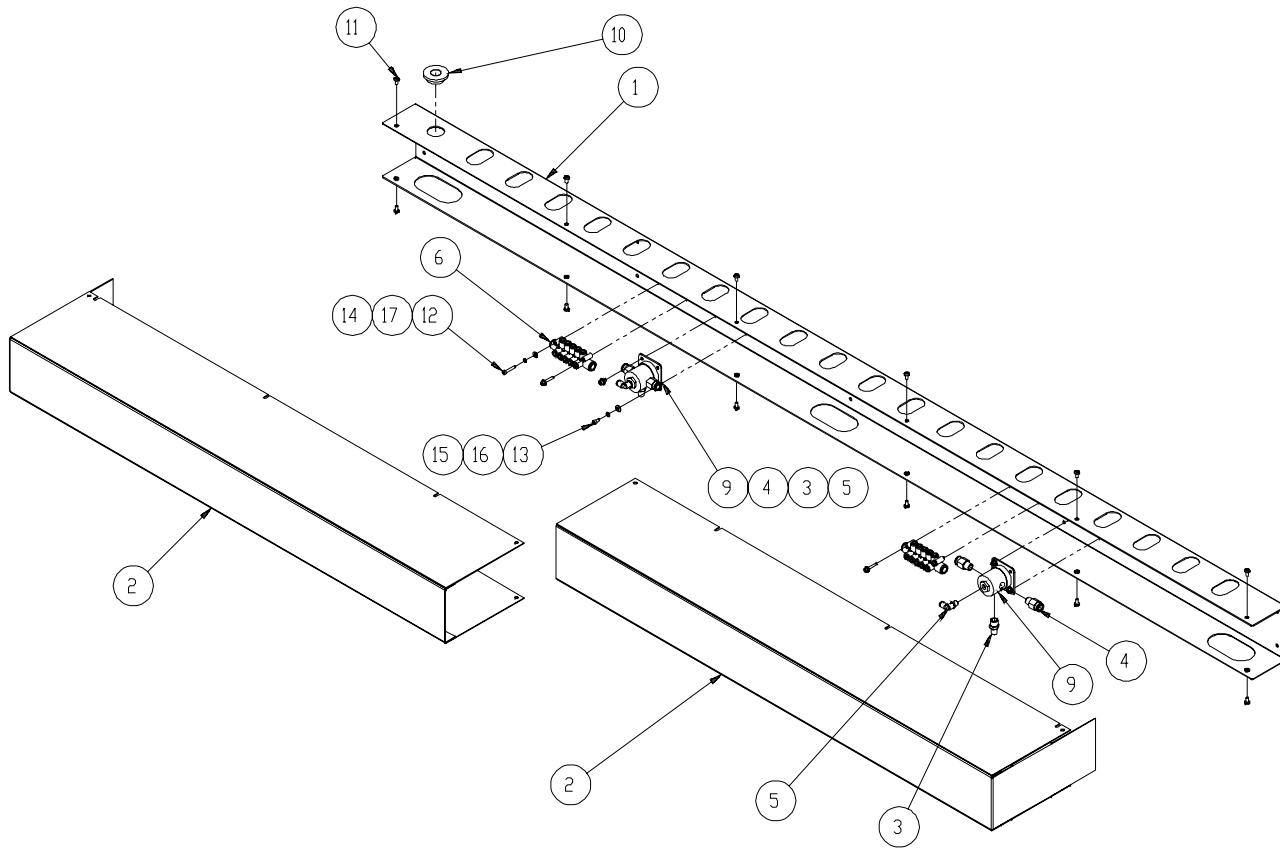


**1331900 Control Box Assembly**

#	Part #	Description	Qty	Pg	#	Part #	Description	Qty	Pg
1	1331901	Control Panel	1		13	AAVF51FM1B	Pressure Switch	1	
2	1331920	Cable Package	1		14	EECA491024	Contactor	1	
3	13459004	Mount Brkt	1		15	EEDC2X2	Wire Duct Cover	4.5'	
4	40-320	AC Power Disconnect	1		16	EEDF2X2	Wire Duct	4.5'	
5	4080-110	Quad Input Module	3		17	FF1724	Strain Relief	4	
6	4080-140	Quad Output Module	3		18	FF264-341	Dual Terminal Block, Grey	7	
7	4080-150	Program Module	1		19	FF264-347	Dual Terminal Block, Green	3	
8	4080-970	Memory Module	1		20	FF264-371	Terminal Block End	3	
9	4080-980	Adapter Module	1		21	FFD2425F	Relay	2	
10	4080-990	Power Supply	1		22	FFRAV781BW	TVS Module	1	
11	AAE1331-7	Solenoid Assy	1		23	MM74472-010	Capacitor	1	
12	AAQUY-4-4	"Y" Fitting	6			Rev. 2			

From the library of: Diamond Needle Corp



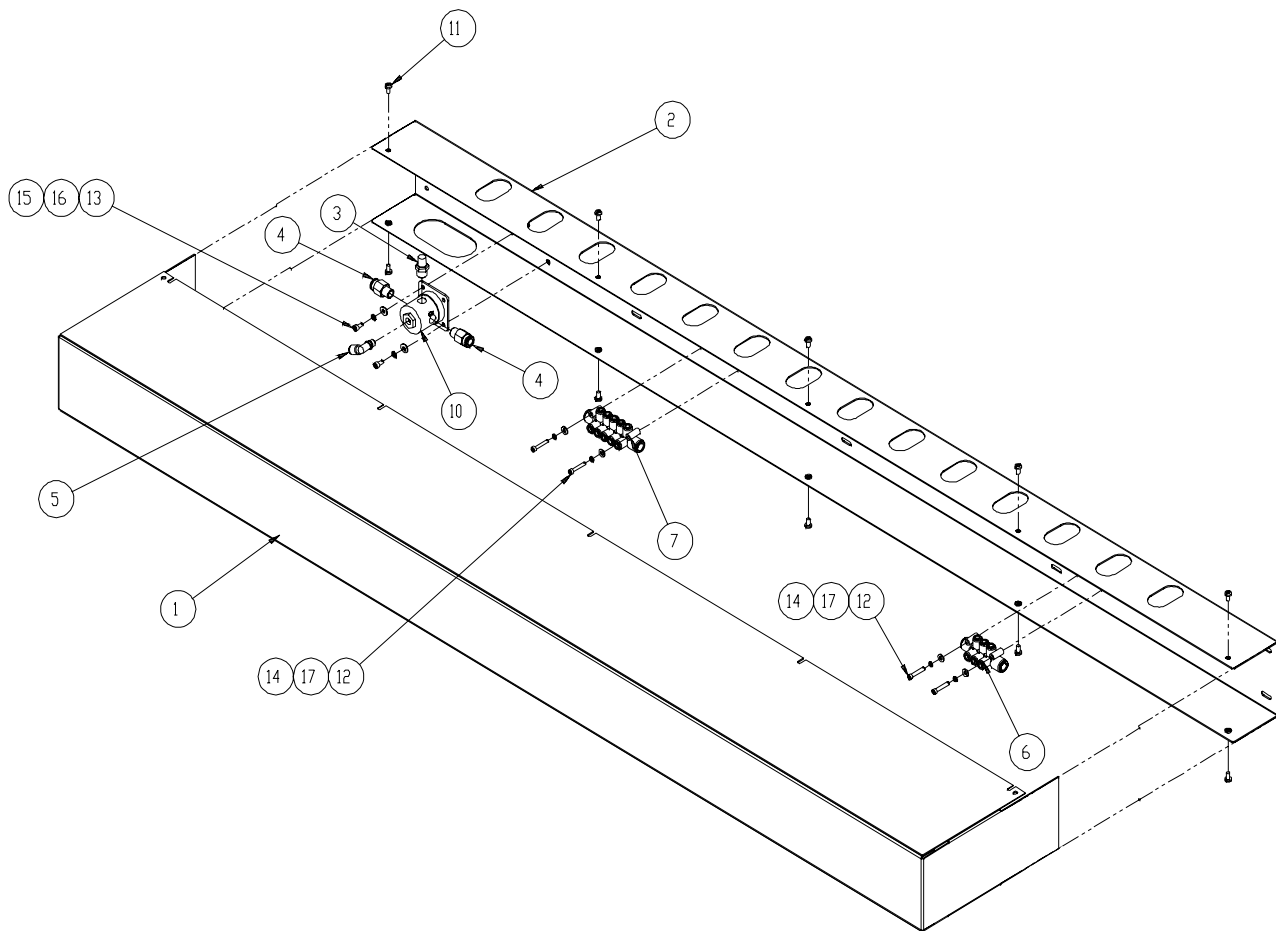


### 1331903 Track Assembly, Long Side

#	Part #	Description	Qty	Pg	#	Part #	Description	Qty	Pg
1	1331902	Channel	1		10	MM9280K33	Grommet	1	
2	1331905	Channel Cover	2		11	SSPS98024	Screw, Pan Head	12	
3	AAFP28	Muffler	2		12	SSSC90064	Screw, Socket Cap	4	
4	AAQMC-3-4	Straight Fitting	4		13	SSSC98024	Screw, Socket Cap	4	
5	AAQME-5-8	Elbow Fitting	2		14	WWF8	Flat Washer	4	
6	AAQMF-145	Air Manifold	2		15	WWFS10	Flat Washer	4	
7	AAQPR-5-4	Reducer Fitting	160		16	WWL10	Lock Washer	4	
8	AAQUT-4-4	"T" Fitting	80		17	WWL8	Lock Washer	4	
9	AAV250A	Pilot Valve	2						
						Rev. 3			

From the library of: Diamond Needle Corp





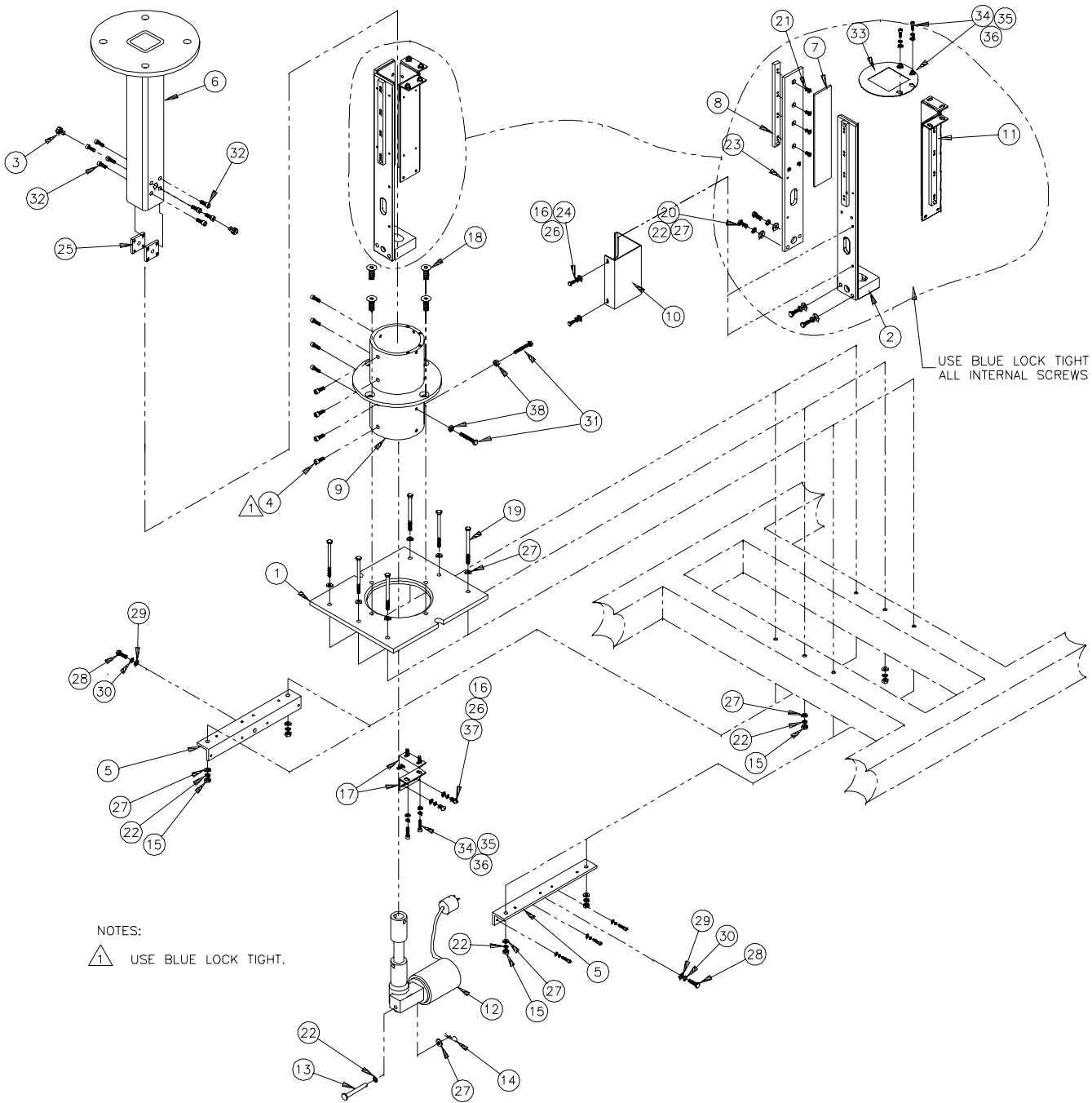
**1331908 Track Assembly, Short Side**

#	Part #	Description	Qty	Pg	#	Part #	Description	Qty	Pg
1	1331906	Channel Cover	1		10	AAV250A	Pilot Valve	1	
2	1331907	Channel	1		11	SSPS98024	Screw, Pan Head	10	
3	AAFP28	Muffler	1		12	SSSC90064	Screw, Socket Cap	4	
4	AAQMC-3-4	Straight Fitting	2		13	SSSC98024	Screw, Socket Cap	2	
5	AAQME-4-8	Elbow Fitting	1		14	WWF8	Flat Washer	4	
6	AAQMF-144	Air Manifold	1		15	WWFS10	Flat Washer	2	
7	AAQMF-145	Air Manifold	1		16	WWL10	Lock Washer	2	
8	AAQPR-5-4	Reducer Fitting	124		17	WWL8	Lock Washer	4	
9	AAQUT-4-4	"T" Fitting	6						

Rev. 2

From the library of: Diamond Needle Corp





From the library of: Diamond Needle Corp



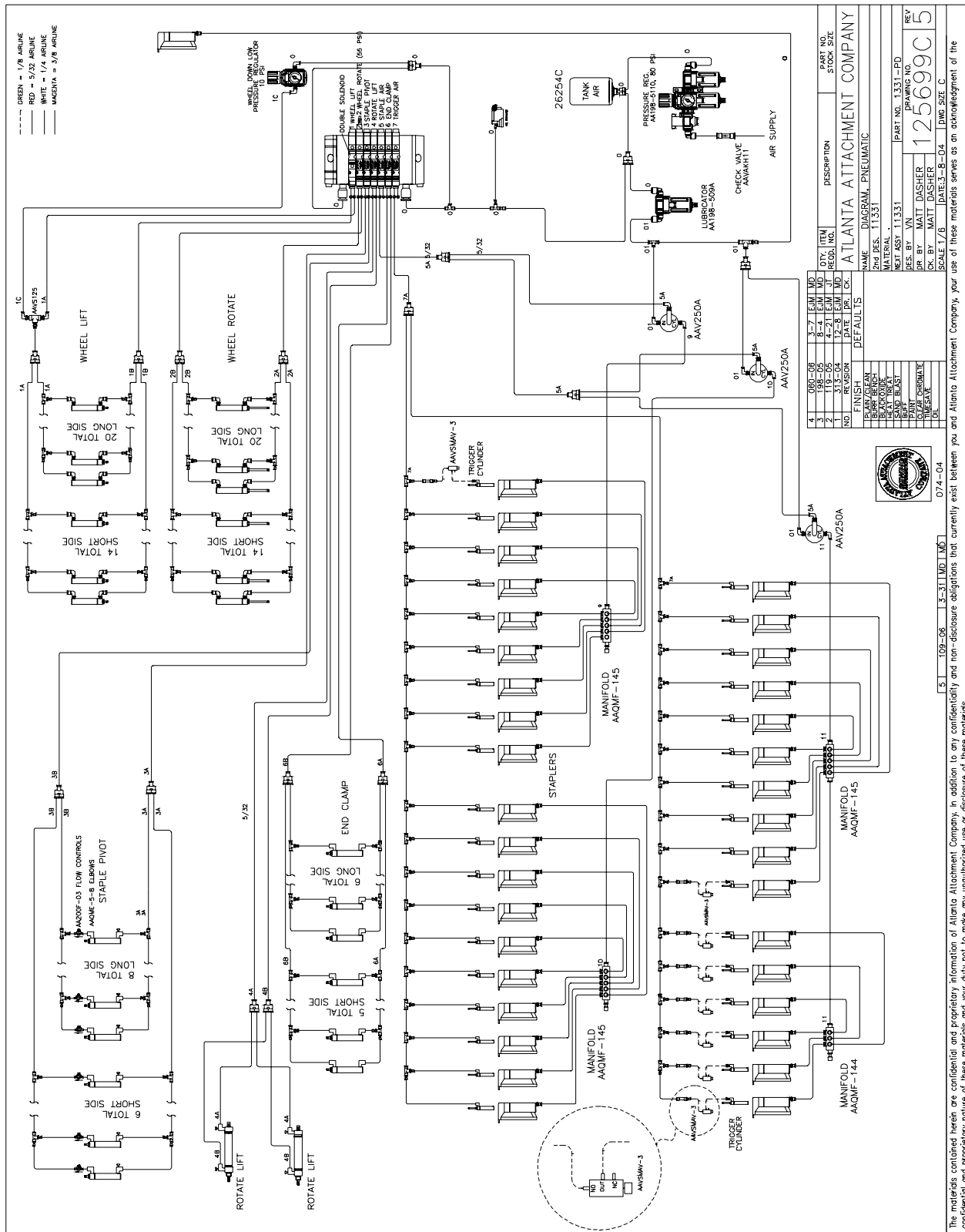
**1345200C Column Lift Assembly**

#	Part #	Description	Qty	Pg	#	Part #	Description	Qty	Pg
1	13451003	Support Plate	1		21	SSFC01040	Screw, Flat Allen	4	
2	13452006B	Actuator Plate	1		22	WWL3/8	Lock Washer	11	
3	13452004B	Column Pin	2		23	13452044A	Support Plate	2	
4	SSSC01032	Screw, Socket Cap	8		24	SSSC98032	Screw, Socket Cap	2	
5	13452008A	Hub Support	2		25	13452047A	Actuator Plate	2	
6	13452009A	Column Assy	1		26	WWFS10	Flat Washer	4	
7	13452039	Slide Plate	4		27	WWFS3/8	Flat Washer	17	
8	13452040	Brace Bar	2		28	SSHC10048	Screw, Hex Cap	2	
9	13452020B	Column Hub Assy	1		29	WWF5/16	Flat Washer	2	
10	13452023B	Actuator Cover	1		30	WWL5/16	Lock Washer	2	
11	13452041	Support Brkt	1		31	SSHC01096F	Screw, Hex Cap	2	
12	1322940	Actuator	1		32	SSSC01024	Screw, Socket Cap	8	
13	MM98306A289	Clevis Pin	1		33	1345093	Bracket	1	
14	MM98338A445	Cotter Pin	1		34	SSSC01040	Screw, Socket Cap	8	
15	NNH3/8-16	Hex Nut	6		35	WWL1/4	Lock Washer	8	
16	WWL10	Lock Washer	4		36	WWF1/4	Flat Washer	8	
17	13452043	Support Brkt	2		37	SSBC98032	Screw, Button Cap	2	
18	SSFC45064	Screw, Flat Allen	4		38	NNH1/4-20	Hex Nut	2	
19	SSHC25288	Screw, Hex Cap	6			Rev. 2			
20	SSHC25064	Screw, Hex Cap	4						

From the library of: Diamond Needle Corp



# 1331-PD Pneumatic Diagram



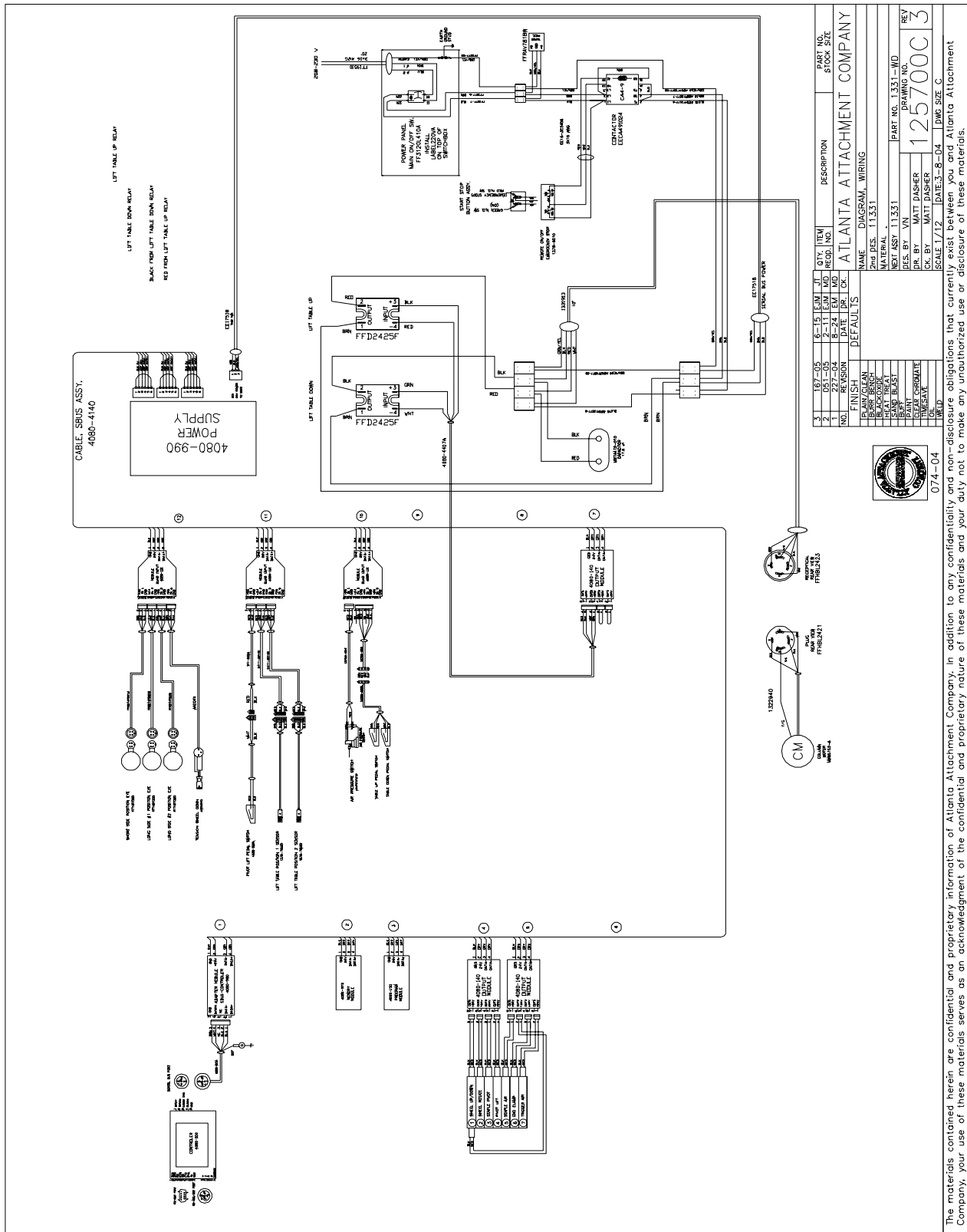
The materials contained herein are confidential and proprietary information of Atlanta Attachment Company. In addition to any confidentiality and non-disclosure obligations that currently exist between you and Atlanta Attachment Company, your use of these materials serves as an acknowledgment of the confidential and proprietary nature of these materials and your duty not to make any unauthorized use or disclosure of these materials.



From the library of: Diamond Needle Corp



# 1331-WD Wiring Diagram



PART NO. STOCK SIZE		DESCRIPTION	
1	1331-WD	1	1331-WD
2	125700C	1	125700C
3	3	1	3

NAME		DIAGRAM, WIRING	
DESIGNED BY	11331	DATE	11/12
DRAWN BY	MATT DASHER	SCALE	1/12
CHECKED BY	MATT DASHER	DATE	3-8-04
APPROVED BY		DATE	



The materials contained herein are confidential and proprietary information of Atlanta Attachment Company. In addition to any confidentiality and non-disclosure obligations that currently exist between you and Atlanta Attachment Company, your use of these materials serves as an acknowledgment of the confidential and proprietary nature of these materials and your duty not to make any unauthorized use or disclosure of these materials.

From the library of: Diamond Needle Corp



**Notes**

From the library of: Diamond Needle Corp





# **Atlanta Attachment Company (AAC)**

## **Statement of Warranty**

### **Manufactured Products**

Atlanta Attachment Company warrants manufactured products to be free from defects in material and workmanship for a period of eight hundred (800) hours of operation or one hundred (100) days which ever comes first. Atlanta Attachment Company warrants all electrical components of the Serial Bus System to be free from defects in material or workmanship for a period of thirty six (36) months.

### **Terms and Conditions:**

- AAC Limited Warranty becomes effective on the date of shipment.
- AAC Warranty claims may be made by telephone, letter, fax or e-mail. All verbal claims must be confirmed in writing.
- AAC reserves the right to require the return of all claimed defective parts with a completed warranty claim form.
- AAC will, at its option, repair or replace the defective machine and parts upon return to AAC.
- AAC reserves the right to make the final decision on all warranty coverage questions.
- AAC warranty periods as stated are for eight hundred (800) hours or one hundred (100) days which ever comes first.
- AAC guarantees satisfactory operation of the machines on the basis of generally accepted industry standards, contingent upon proper application, installation and maintenance.
- AAC Limited Warranty may not be changed or modified and is not subject to any other warranty expressed or implied by any other agent, dealer, or distributor unless approved in writing by AAC in advance of any claim being filed.

### **What Is Covered**

- Electrical components that are not included within the Serial Bus System that fail due to defects in material or workmanship, which are manufactured by AAC are covered for a period of eight hundred (800) hours.
- Mechanical parts or components that fail due to defects in material or workmanship, which are manufactured by AAC.
- Purchased items (sewing heads, motors, etc.) will be covered by the manufacturer's (OEM) warranty.
- AAC will assist in the procurement and handling of the manufacturer's (OEM) claim.

### **What Is Not Covered**

- Parts that fail due to improper usage, lack of proper maintenance, lubrication and/or modification.
- Damages caused by; improper freight handling, accidents, fire and issues resulting from unauthorized service and/or personnel, improper electrical, plumbing connections.
- Normal wear of machine and parts such as Conveyor belts, "O" rings, gauge parts, cutters, needles, etc.
- Machine adjustments related to sewing applications and/or general machine operation.
- Charges for field service.
- Loss of time, potential revenue, and/or profits.
- Personal injury and/or property damage resulting from the operation of this equipment.

# Atlanta Attachment Company (AAC) Declaración de Garantía

## Productos Manufacturados

Atlanta Attachment Company garantiza que los productos de fabricación son libre de defectos de material y de mano de obra durante un periodo de ochocientos (800) horas de operación o cien (100) días cual llega primero. Atlanta Attachment Company garantiza que todos los componentes del bus serie son libre de defectos de material y de mano de obra durante un periodo de treinta y seis (36) meses.

## Términos y Condiciones:

- La Garantía Limitada de AAC entra en efecto el día de transporte.
- Reclamos de la Garantía de AAC pueden ser realizados por teléfono, carta, fax o correo electrónico. Todo reclamo verbal tiene que ser confirmado via escrito.
- AAC reserva el derecho para exigir el retorno de cada pieza defectuosa con un formulario de reclamo de garantía.
- AAC va, según su criterio, reparar o reemplazar la máquina o pieza defectuosa devuelto para AAC.
- AAC reserva el derecho para tomar la decisión final sobre toda cuestión de garantía.
- Las garantías de AAC tiene un validez de ochocientos (800) horas o cien (100) días cual llega primero.
- AAC garantiza operación satisfactoria de sus máquinas en base de las normas aceptadas de la industria contingente en la instalación y mantenimiento adecuada.
- La garantía de AAC no puede ser cambiado o modificado y no está sujeto a cualquier otra garantía implicado por otro agente o distribuidor menos que sea autorizado por AAC antes de cualquier reclamo.

## Lo Que Está Garantizado

- Componentes eléctricos que no está incluidos dentro del sistema Bus Serie que han sido manufacturados por AAC son garantizados por un periodo de ochocientos (800) horas.
- Mechanical parts or components that fail due to defects in material or workmanship, which are manufactured by AAC.
- Componentes comprados (Motores, Cabezales, ) son protegidos debajo de la garantía del fabricante.
- AAC asistirá con el manejo de todo reclamo de garantía bajo la garantía del fabricante.

## Lo Que No Está Garantizado

- Falla de repuestos al raíz de uso incorrecto, falta de mantenimiento, lubricación o modificación.
- Daños ocurridos al raíz de mal transporte, accidentes, incendio o cualquier daño al resultado de servicio por personas no autorizados o instalaciones incorrectas de conexiones eléctricas o neumáticas.
- Desgaste normal de repuestos como correas, anillos de goma, cuchillos, agujas, etc.
- Ajustes de la máquina en relación a las aplicaciones de costura y/o la operación en general de la máquina.
- Gastos de reparaciones en el campo.
- Pérdida de tiempo, ingresos potenciales, y/o ganancias.
- Daños personales y/o daños al propiedad al resultado de la operación de este equipo.

© 2006 Atlanta Attachment Company. All rights reserved.

© 2006 Atlanta Attachment Company. Derechos reservados.